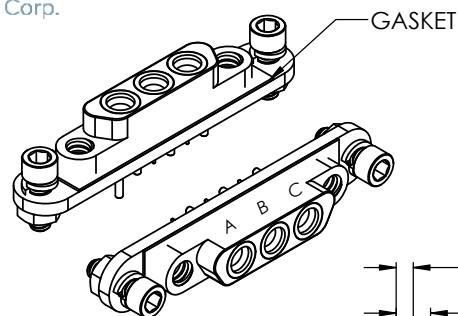
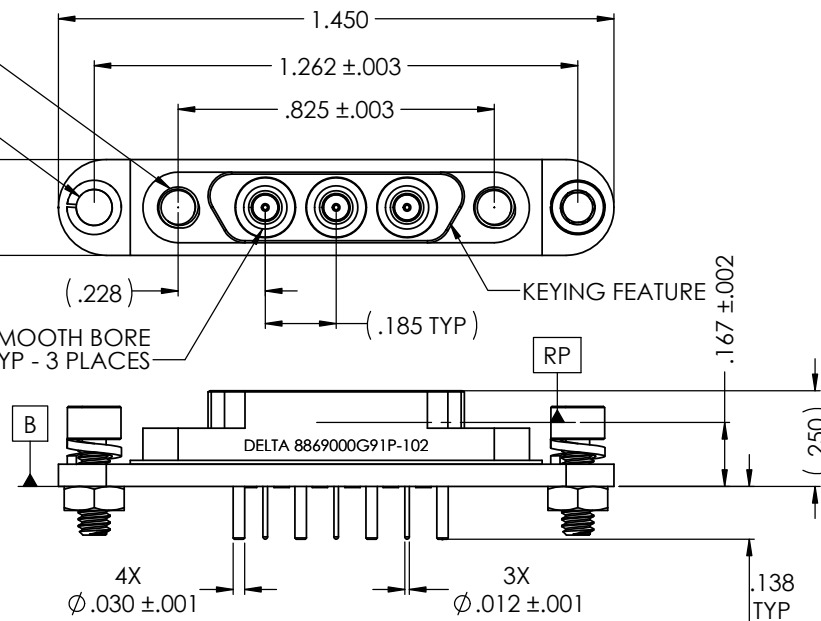




8869000G91P-102

GROUND PAD
.003 ± .001 ABOVE [B]DETAIL A
SCALE 6 : 14-40 UNC-2B
2 PLACESØ .094 THRU
2 PLACES

(.250)

SMPM - SMOOTH BORE
TYP - 3 PLACES

NOTES:

1. ASSEMBLED CONNECTOR INTERFACE IS DESIGNED IN ACCORDANCE WITH MIL-STD-348.
2. ALL MOUNTING HARDWARE SHIPPED LOOSE.

BLOCK	1	BRASS PER ASTM B16, C36000 ALLOY, TEMPER H02	GOLD PLATE PER ASTM B488
BUSHING	3	CORROSION RESISTANT STEEL PER ASTM 582, S30300, COND. A	PASSIVATE PER SAE-AMS-2700
INSULATOR	3	TORLON 4203 (POLYAMIDE-IMIDE) PER MIL-P-46179	N/A
PIN	4	BRASS PER ASTM B16, C36000 ALLOY, TEMPER H02	GOLD PLATE PER ASTM B488
CONTACT	3	BERYLLIUM COPPER PER ASTM B196, C17300, TEMPER TD04	GOLD PLATE PER ASTM B488
SCREW	2	18-8 STAINLESS STEEL	N/A
SPLIT LOCK	2	316L STAINLESS STEEL	N/A

PROPRIETARY AND CONFIDENTIAL
THE INFORMATION CONTAINED IN THIS DRAWING IS THE SOLE PROPERTY OF DELTA ELECTRONICS MFG CORP. ANY REPRODUCTION IN PART OR AS A WHOLE WITHOUT THE WRITTEN PERMISSION OF DELTA ELECTRONICS MFG CORP. IS PROHIBITED.

FILE NAME: 8869000G91P-1021

UNLESS OTHERWISE SPECIFIED:
DIMENSIONS ARE IN INCHES
TOLERANCES:
FRACTIONAL ± 1/64
ANGULAR: MACH ± 1° BEND ± 1°
TWO PLACE DECIMAL ± .01
THREE PLACE DECIMAL ± .005
SURFACE FINISH = 63
MAX. CORNER BREAKS = .004

THIRD ANGLE
PROJECTIONMATERIAL
SEE TABLEFINISH
SEE TABLE

SCALE: 3:1

NAME	DATE
DRAWN ADK	2/21/2019
CHECKED ADK	2/21/2019
ENG APPR. BJM	2/21/2019

COMMENTS:

DELTA ELECTRONICS MFG CORP.
BEVERLY, MA 01915
www.deltatrf.com / Ph: 978-927-1060 / Fax: 978-922-6430

TITLE:

SMPM PCB VERTICAL LAUNCH
MALE - SMOOTH BORE
3 POSITION

SIZE	DWG. NO.	REV
B	8869000G91P-102	-
CODE ID - 00795	WEIGHT: 6.74 g	SHEET 1 OF 1