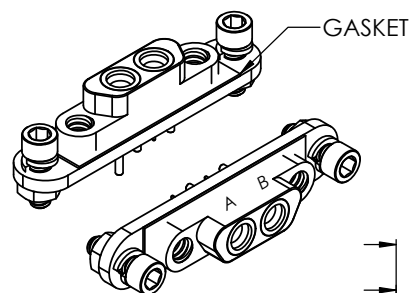
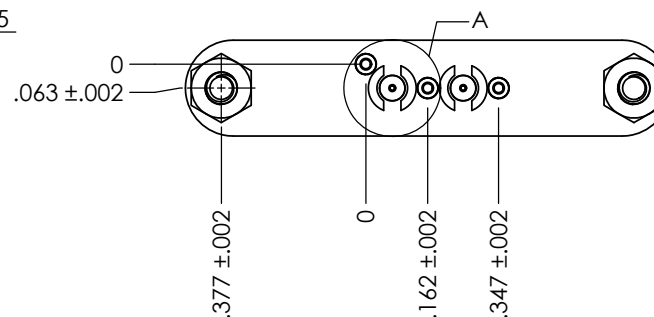
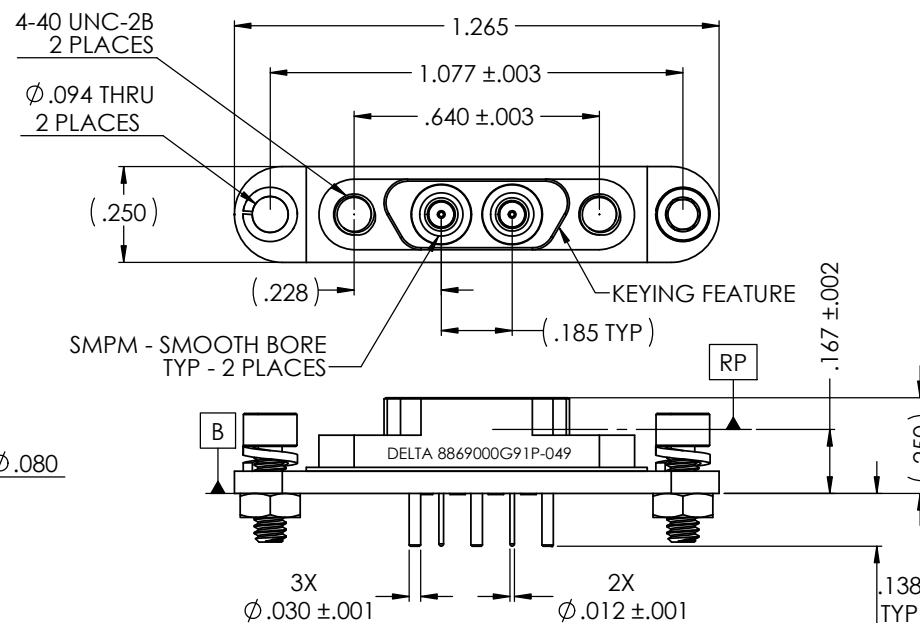




8869000G91P-101

GROUND PAD  
.003 ± .001 ABOVE [B]DETAIL A  
SCALE 6 : 1

## NOTES:

1. ASSEMBLED CONNECTOR INTERFACE IS DESIGNED IN ACCORDANCE WITH MIL-STD-348.
2. ALL MOUNTING HARDWARE SHIPPED LOOSE.

BLOCK	1	BRASS PER ASTM B16, C36000 ALLOY, TEMPER H02	GOLD PLATE PER ASTM B488
BUSHING	2	CORROSION RESISTANT STEEL PER ASTM 582, S30300, COND. A	PASSIVATE PER SAE-AMS-2700
INSULATOR	2	TORLON 4203 (POLYAMIDE-IMIDE) PER MIL-P-46179	N/A
PIN	3	BRASS PER ASTM B16, C36000 ALLOY, TEMPER H02	GOLD PLATE PER ASTM B488
CONTACT	2	BERYLLIUM COPPER PER ASTM B196, C17300, TEMPER TD04	GOLD PLATE PER ASTM B488
SCREW	2	18-8 STAINLESS STEEL	N/A
SPLIT LOCK	2	316L STAINLESS STEEL	N/A

**PROPRIETARY AND CONFIDENTIAL**  
THE INFORMATION CONTAINED IN THIS DRAWING IS THE SOLE PROPERTY OF DELTA ELECTRONICS MFG CORP. ANY REPRODUCTION IN PART OR AS A WHOLE WITHOUT THE WRITTEN PERMISSION OF DELTA ELECTRONICS MFG CORP. IS PROHIBITED.

FILE NAME: 8869000G91P-049T

## UNLESS OTHERWISE SPECIFIED:

DIMENSIONS ARE IN INCHES  
TOLERANCES:  
FRACTIONAL ± 1/64  
ANGULAR: MACH ± 1° BEND ± 1°  
TWO PLACE DECIMAL ± .01  
THREE PLACE DECIMAL ± .005  
SURFACE FINISH = 63  
MAX. CORNER BREAKS = .004

THIRD ANGLE  
PROJECTIONMATERIAL  
SEE TABLEFINISH  
SEE TABLE

SCALE: 3:1

NAME	DATE
DRAWN ADK	2/21/2019
CHECKED ADK	2/21/2019
ENG APPR. BJM	2/21/2019

COMMENTS:

**DELTA ELECTRONICS MFG CORP.**  
**BEVERLY, MA 01915**  
www.deltarf.com / Ph: 978-927-1060 / Fax: 978-922-6430

TITLE:

SMMPM PCB VERTICAL LAUNCH  
MALE - SMOOTH BORE  
2 POSITION

SIZE <b>B</b>	DWG. NO. 8869000G91P-101	REV <b>A</b>
CODE ID - 00795	WEIGHT: 5.60 g	SHEET 1 OF 1