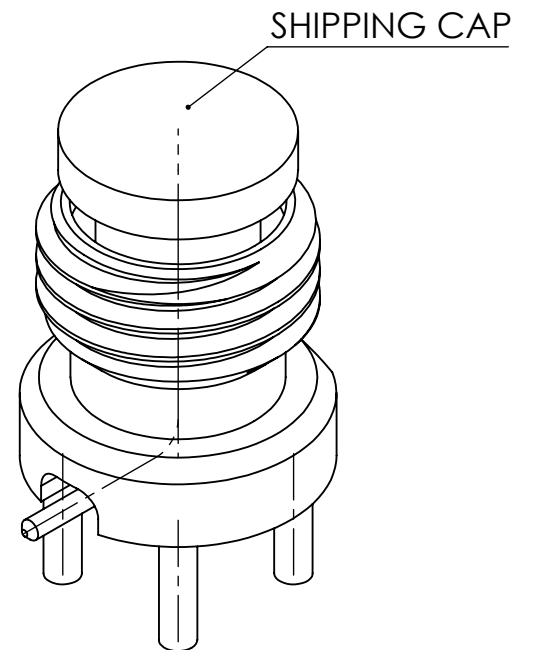
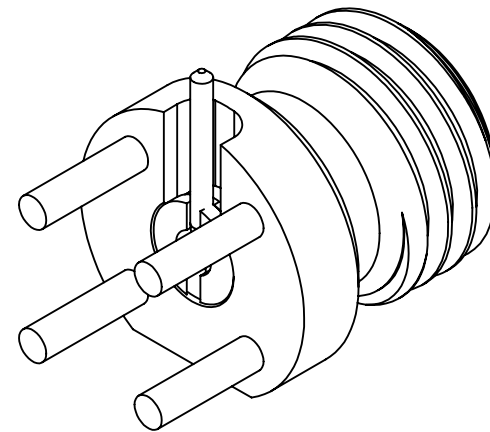
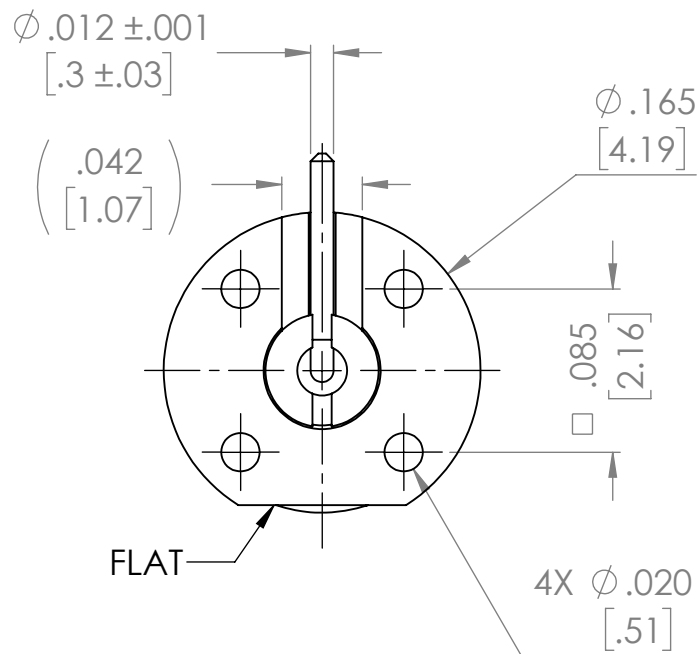
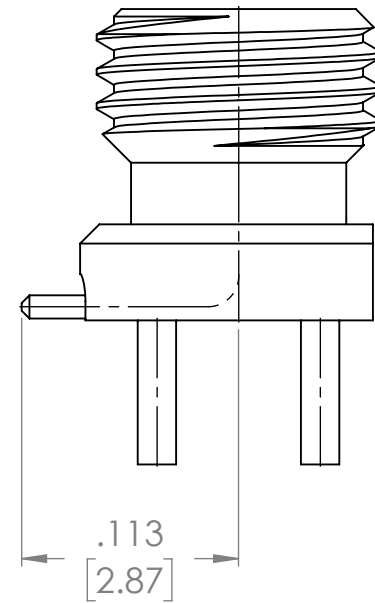
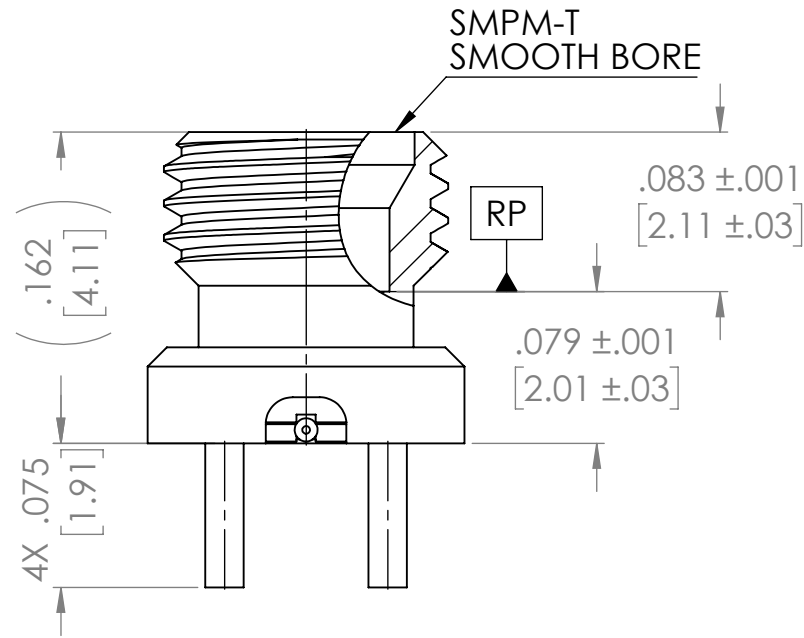




8868000G91N-002



MECHANICAL SPECIFICATIONS	
DURABILITY	500 CYCLES
FORCE TO ENGAGE	4 LBS MAX
FORCE TO DISENGAGE	0.5 LBS MIN
ELECTRICAL SPECIFICATIONS	
FREQUENCY RANGE	DC - 40 GHz
IMPEDANCE	50 ± 2 OHMS
INSULATION RESIST.	3500 MEGOHMS MIN
ENVIRONMENTAL SPECIFICATIONS	
TEMP RANGE	-65° TO +125° C

NOTES:

1. ASSEMBLED CONNECTOR INTERFACE IS DESIGNED IN ACCORDANCE WITH MIL-STD-348.

INSULATOR	TEFLON PER ASTM D1710, TYPE 1, GRADE 1, CLASS A.	N/A
CONTACT	BERYLLIUM COPPER PER ASTM B196, C17300, TEMPER TD04	GOLD PLATE PER ASTM B488, TYPE 2, CLASS .75
INSULATOR	TORLON 4203 (POLYAMIDE-IMIDE) PER MIL-P-46179	N/A
BODY	CORROSION RESISTANT STEEL PER ASTM A582, S30300, COND. A	GOLD PLATE PER ASTM B488
DESCRIPTION	MATERIAL	FINISH

Table 1

PROPRIETARY AND CONFIDENTIAL
THE INFORMATION CONTAINED IN THIS DRAWING IS THE SOLE PROPERTY OF DELTA ELECTRONICS MFG CORP. ANY REPRODUCTION IN PART OR AS A WHOLE WITHOUT THE WRITTEN PERMISSION OF DELTA ELECTRONICS MFG CORP. IS PROHIBITED.
FILE NAME: 8868000G91N-002T

UNLESS OTHERWISE SPECIFIED:

DIMENSIONS ARE IN INCHES
TOLERANCES:
FRACTIONAL ± 1/64
ANGULAR: MACH ± 1° BEND ± 1°
TWO PLACE DECIMAL ±.01
THREE PLACE DECIMAL ±.005
SURFACE FINISH = 63
MAX. CORNER BREAKS = .004

THIRD ANGLE PROJECTION

MATERIAL SEE TABLE

FINISH SEE TABLE

SCALE: 10:1

DRAWN	ADK	10/10/2022
CHECKED	BJM	10/10/2022
ENG APPR.	BJM	10/10/2022

COMMENTS:

NAME	DATE
ADK	10/10/2022
BJM	10/10/2022
BJM	10/10/2022

DELTA ELECTRONICS MFG CORP.
BEVERLY, MA 01915

www.deltarf.com / Ph: 978-927-1060 / Fax: 978-922-6430

TITLE:

**SMPM-T STRAIGHT PCB THRU MOUNT
RECEPTACLE MALE - SMOOTH BORE
RIGHT ANGLE POST CONTACT**

SIZE	DWG. NO.	REV
B	8868000G91N-002	-

CODE ID - 00795 WEIGHT: 0.26 g SHEET 1 OF 1