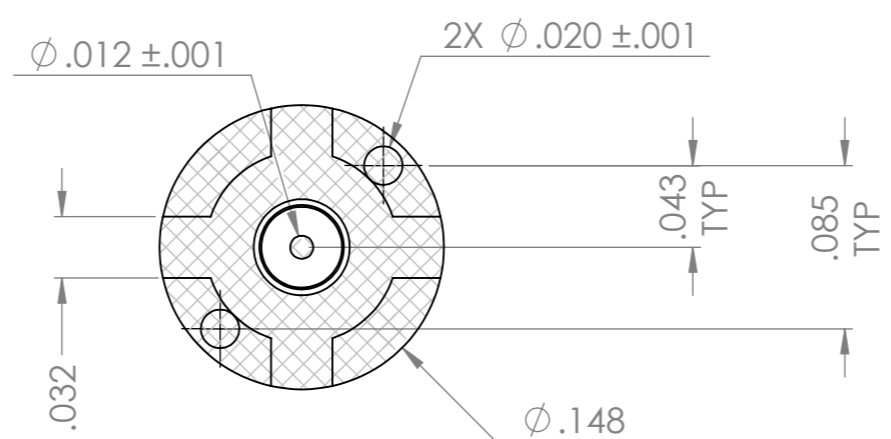
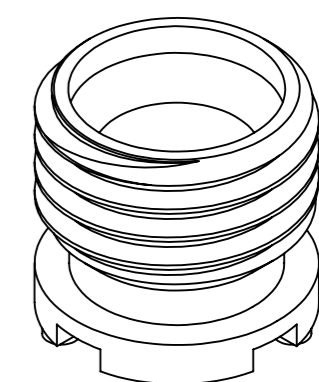
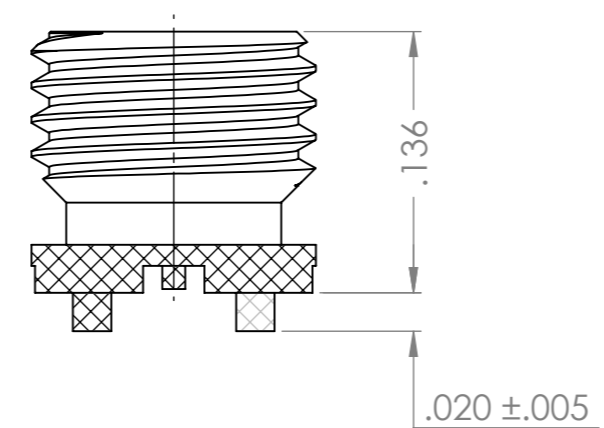
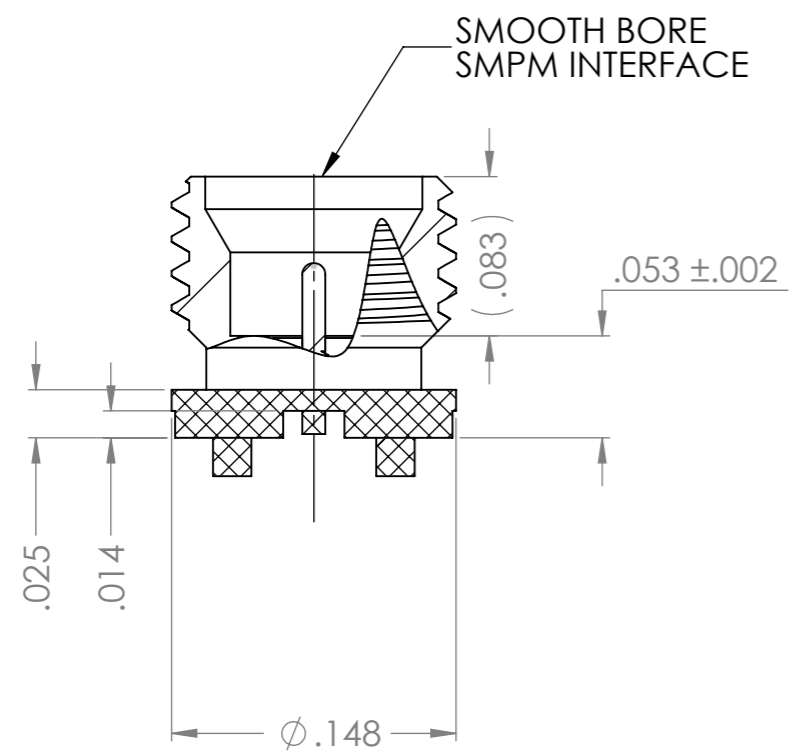


8868000G91N-001



-001-LD	YES	SEE NOTE 2
-001	NO	N/A
*	TIN DIPPED	SOLDER TYPE

NOTES:

- ASSEMBLED CONNECTOR INTERFACE IS DESIGNED IN ACCORDANCE WITH MIL-STD-348, FIG. 328-3.
- SEE APPLICABLE DASH # - (FOR -.000-LD ONLY)** - Sn63Pb37 PER IPC J-STD-001 CLASS 3 AT AREAS SHOWN BELOW. ALL EXCESS TINNING SHALL BE REMOVED. TIN EXCESS NOT ALLOWED ON SURFACE -A- NOR THE CENTER CONTACT. AFTER TINNING CENTER CONTACT NEEDS TO BE FLUSH TO BELOW SURFACE -A-. DIMENSIONS APPLY AFTER PLATING, BUT BEFORE TINNING.



= REQUIRED SURFACES FOR TINNING.

DESCRIPTION	MATERIAL	FINISH
INSULATOR	TEFLON PER ASTM D1710, TYPE 1, GRADE 1, CLASS A.	N/A
CONTACT	BERYLLIUM COPPER PER ASTM B196, C17300, TEMPER TD04	GOLD PLATE PER ASTM B488
INSULATOR	TEFLON PER ASTM D1710, TYPE 1, GRADE 1, CLASS A.	N/A
BODY	BERYLLIUM COPPER PER ASTM B196, C17300, TEMPER TD04	GOLD PLATE PER ASTM B488

Table 1

PROPRIETARY AND CONFIDENTIAL
 THE INFORMATION CONTAINED IN THIS DRAWING IS THE SOLE PROPERTY OF DELTA ELECTRONICS MFG CORP. ANY REPRODUCTION IN PART OR AS A WHOLE WITHOUT THE WRITTEN PERMISSION OF DELTA ELECTRONICS MFG CORP. IS PROHIBITED.
 FILE NAME: 8868000G91N-001T

UNLESS OTHERWISE SPECIFIED:		NAME	DATE
DIMENSIONS ARE IN INCHES		DRAWN	ADK 1/27/2021
TOLERANCES:		CHECKED	1/27/2021
FRACTIONAL ± 1/64		ENG APPR.	BJM 1/27/2021
ANGULAR: MACH ± 1° BEND ± 1°		COMMENTS:	
TWO PLACE DECIMAL ±.01			
THREE PLACE DECIMAL ±.005			
SURFACE FINISH = 63			
MAX. CORNER BREAKS = .004			
THIRD ANGLE PROJECTION			
MATERIAL	SEE TABLE		
FINISH	SEE TABLE		
SCALE: 10:1			

DELTA ELECTRONICS MFG CORP. BEVERLY, MA 01915 www.deltarf.com / Ph: 978-927-1060 / Fax: 978-922-6430		
TITLE: SMPM-T SMOOTH BORE STRAIGHT PCB MOUNT RECEPTACLE MALE WITH SURFACE MOUNT CONTACT		
SIZE B	DWG. NO. 8868000G91N-001	REV A
CODE ID - 00795	WEIGHT: 0.19 g	SHEET 1 OF 1