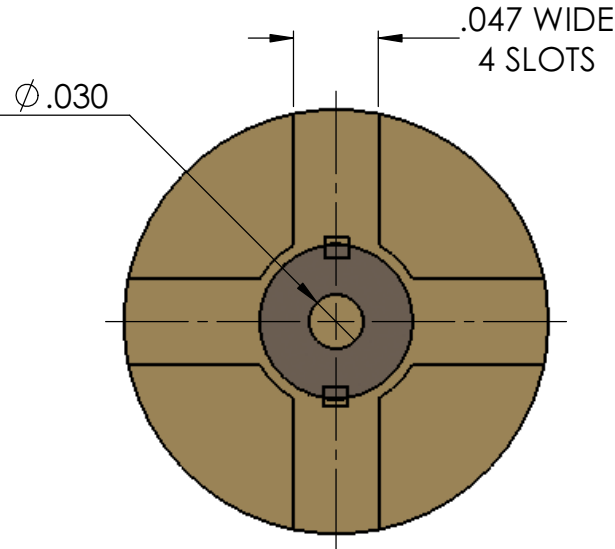
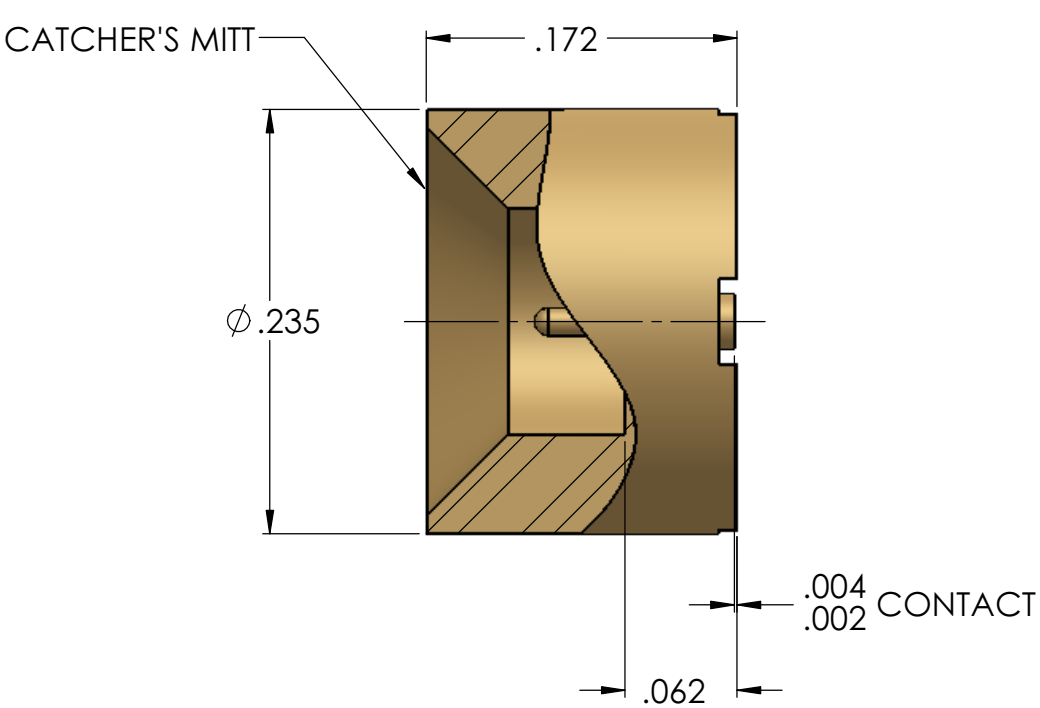
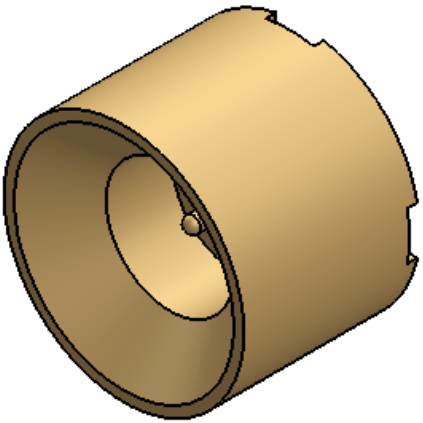




8668000G91P-017



| MECHANICAL SPECIFICATIONS |             |
|---------------------------|-------------|
| DURABILITY                | 500 CYCLES  |
| CAPTIVATION - CONTACT     | 2 LBS MIN   |
| FORCE TO ENGAGE           | 5.0 LBS TYP |
| FORCE TO DISENGAGE        | 0.5 LBS TYP |

| ELECTRICAL SPECIFICATIONS   |              |
|-----------------------------|--------------|
| FREQUENCY RANGE             | DC - 6 GHz   |
| VSWR                        | 1.35 MAX     |
| IMPEDANCE                   | 50 ± 2 OHMS  |
| WORKING VOLTAGE @ SEA LEVEL | 335 VRMS MAX |
| DWV @ SEA LEVEL             | 500 VRMS MIN |
| INSULATION RESIST.          | 5000 MΩ      |

| ENVIRONMENTAL SPECIFICATIONS |                               |
|------------------------------|-------------------------------|
| SHOCK                        | MIL-STD-202, METH. 213 COND I |
| VIBRATION                    | MIL-STD-202, METH. 204 COND D |
| ALTITUDE                     | MIL-STD-202, METH. 105 COND C |
| THERMAL SHOCK                | MIL-STD-202, METH. 107 COND B |
| TEMP RANGE                   | -65° TO +125° C               |

- NOTES:
1. ASSEMBLED CONNECTOR INTERFACE IS DESIGNED IN ACCORDANCE WITH MIL-STD-348.

|                          |  |                          |
|--------------------------|--|--------------------------|
| INSULATOR                | TORLON 4203 (POLYAMIDE-IMIDE)<br>PER MIL-P-46179                 | N/A                      |
| CONTACT                  | BERYLLIUM COPPER PER ASTM B196,<br>C17300, TEMPER TD04           | GOLD PLATE PER ASTM B488 |
| BODY - HIGH<br>FREQUENCY | CORROSION RESISTANT STEEL PER<br>ASTM 582, S30300 ALLOY, COND. A | GOLD PLATE PER ASTM B488 |
| DESCRIPTION              | MATERIAL   | FINISH                   |

Table 1

**PROPRIETARY AND CONFIDENTIAL**  
THE INFORMATION CONTAINED IN THIS  
DRAWING IS THE SOLE PROPERTY OF  
DELTA ELECTRONICS MFG CORP. ANY  
REPRODUCTION IN PART OR AS A WHOLE  
WITHOUT THE WRITTEN PERMISSION OF  
DELTA ELECTRONICS MFG CORP. IS  
PROHIBITED.

FILE NAME: 8668000G91P-017T

| UNLESS OTHERWISE SPECIFIED:   |                           | NAME      | DATE     |
|---|---------------------------|-----------|----------|
| DIMENSIONS ARE IN INCHES<br>TOLERANCES:<br>FRACTIONAL ± 1/64<br>ANGULAR: MACH ± 1° BEND ± 1°<br>TWO PLACE DECIMAL ± .01<br>THREE PLACE DECIMAL ± .005<br>SURFACE FINISH = 63<br>MAX. CORNER BREAKS = .004 | THIRD ANGLE<br>PROJECTION |           |          |
|   | MATERIAL                  | SEE TABLE |          |
|   | FINISH                    | SEE TABLE |          |
|   | SCALE:                    |           |          |
| DRAWN   |                           | ADK       | 4/9/2015 |
| CHECKED   |                           | ADK       | 4/9/2015 |
| ENG APPR.   |                           | BJM       | 4/9/2015 |
| COMMENTS:   |                           |           |          |

| DELTA ELECTRONICS MFG CORP.<br>BEVERLY, MA 01915   |                             |                 |  |
|--|-----------------------------|-----------------|--|
| www.deltarf.com / Ph: 978-927-1060 / Fax: 978-922-6430                                       |                             |                 |  |
| TITLE:<br>SMP STRAIGHT PCB / SURFACE MOUNT<br>RECEPTACLE MALE<br>POST CONTACT CATCHER'S MITT |                             |                 |  |
| SIZE<br><b>B</b>   | DWG. NO.<br>8668000G91P-017 | REV<br><b>A</b> |  |
| CODE ID - 00795  | WEIGHT: g                   | SHEET 1 OF 1    |  |