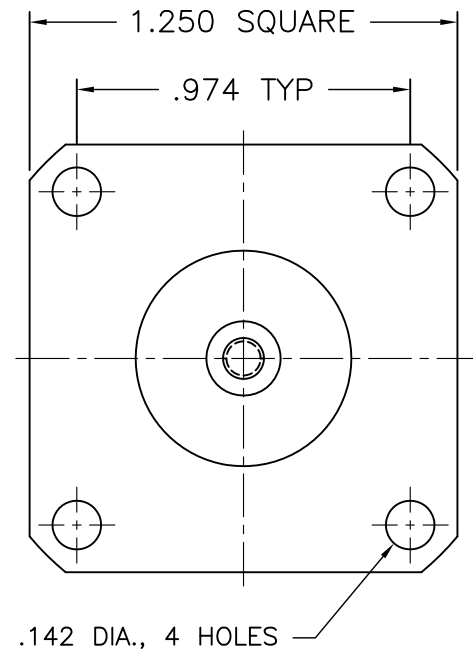
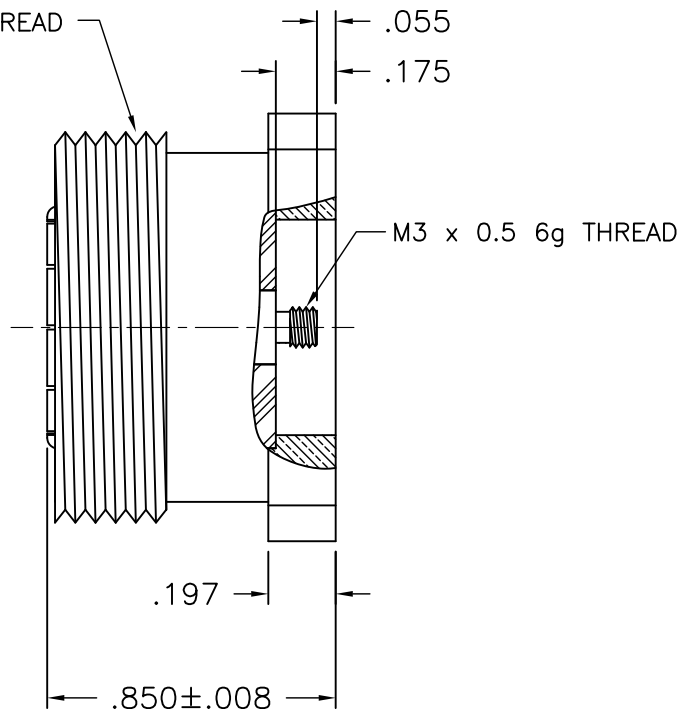




9258-000-A911

M29 x 1.5 6g THREAD



NOTES:

1. ASSEMBLED CONNECTOR INTERFACE IS DESIGNED IN ACCORDANCE WITH IEC PUBLICATION 169.4.

2. MATERIAL: BODY & CONTACT FINGERS - BRASS PER ASTM B16
 CONTACT (PRE-INSTALLED) - SPRING BRASS
 INSULATOR - TEFLON PER ASTM D1710

3. FINISHES: ALL METAL PARTS - SILVER PLATE PER QQ-S-365

4. ELECTRICAL PROPERTIES:

NOMINAL IMPEDANCE: 50 OHMS
 FREQUENCY RANGE: DC-7.5 GHz
 DWV: 4,000 VRMS
 POWER RATING: 2500 WATTS (@ 1 GHz)

UNLESS OTHERWISE SPECIFIED: TOLERANCES: 3 PLACES = ±.005, 2 PLACES = ±.02, ANGLES = ±1/2°, SURFACE FINISH = 63

B	REVISED	6/22/11
A	REDRAWN	6/6/2001
-	OUTLINE	2/22/95
ALT.	REVISIONS	DATE

DELTA ELECTRONICS MFG. CORP. Beverly, MA 01915				
TITLE: 7/16 PANEL JACK RECEPTACLE - METRIC THREADED CONTACT				
Drawn by BJM 6/6/2001	Scale 2/1	Ckd. by MR	Engr Appd MCD	FILE NAME: 9258000A911-000T

THESE DRAWINGS AND SPECIFICATIONS ARE THE PROPERTY OF DELTA ELECTRONICS MFG CORP. AND SHALL NOT BE REPRODUCED, OR COPIED OR USED AS THE BASIS FOR THE MANUFACTURE OR SALE OF APPARATUS OR DEVICES WITHOUT THEIR EXPRESS WRITTEN CONSENT.

CODE IDENT.-00795

9258-000-A911