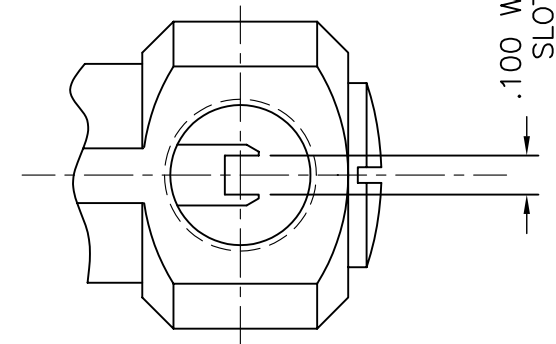
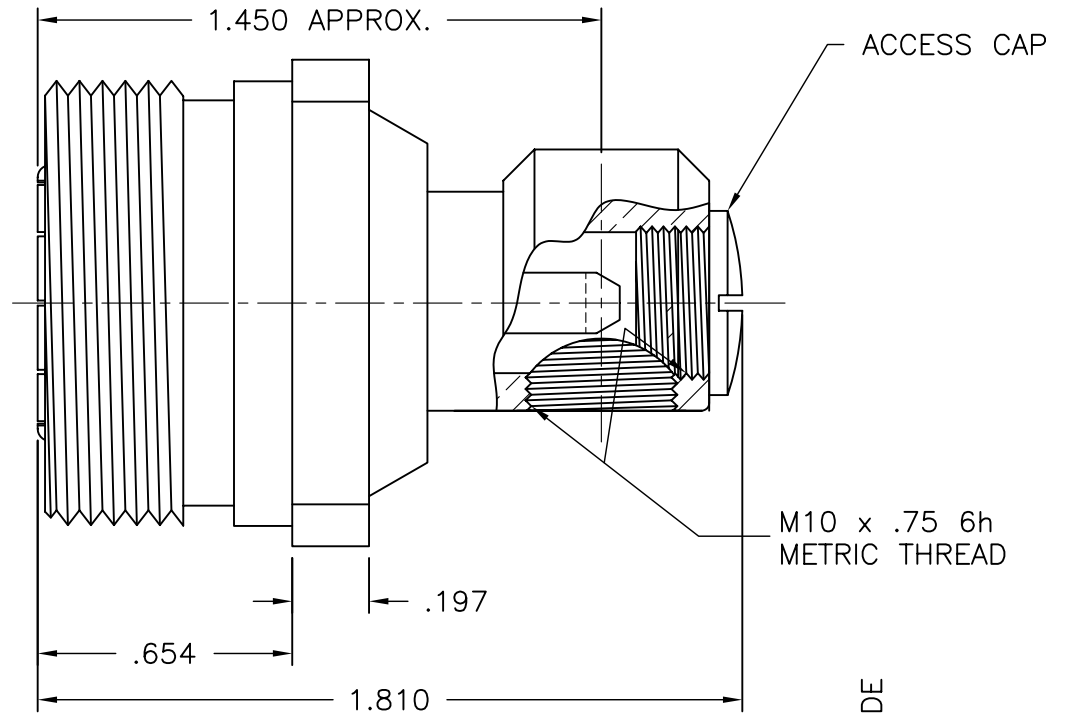
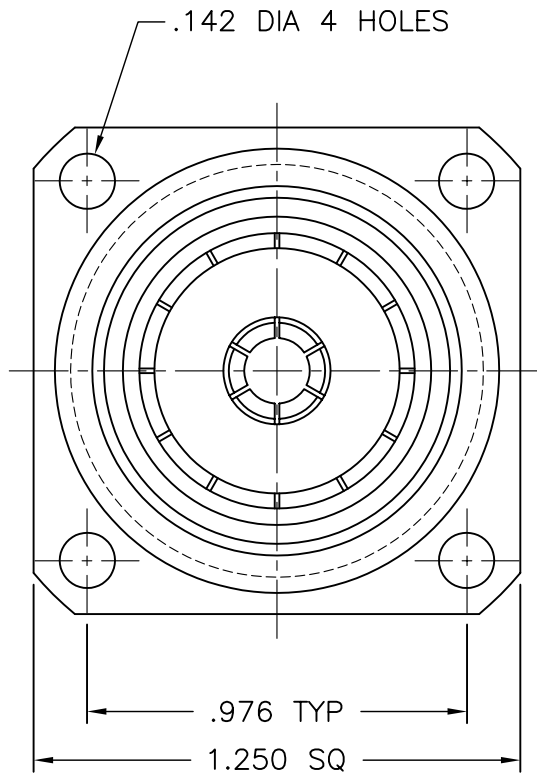




9211-000-A911-1



**NOTES:**

1. ASSEMBLED CONNECTOR INTERFACE IS DESIGNED IN ACCORDANCE WITH IEC PUBLICATION 169.4
2. MATERIAL: ALL METAL PARTS - BRASS PER ASTM B16  
INSULATOR - TEFLON PER ASTM D1710
3. FINISHES: ALL METAL PARTS - SILVER PLATE PER QQ-S-365

UNLESS OTHERWISE SPECIFIED: TOLERANCES: 3 PLACES =  $\pm 0.005$ , 2 PLACES =  $\pm 0.02$ , ANGLES =  $\pm 1/2^\circ$ , SURFACE FINISH = 63

-	OUTLINE	12/3/04
ALT.	REVISIONS	DATE

THESE DRAWINGS AND SPECIFICATIONS ARE THE PROPERTY OF DELTA ELECTRONICS MFG CORP. AND SHALL NOT BE REPRODUCED, OR COPIED OR USED AS THE BASIS FOR THE MANUFACTURE OR SALE OF APPARATUS OR DEVICES WITHOUT THEIR EXPRESS WRITTEN CONSENT.

DELTA ELECTRONICS MFG. CORP. Beverly, MA 01915

TITLE:  
7/16 PANEL MOUNT JACK COMBINATION HEAD

Drawn by BJM	Scale 2/1	Ckd. by MR	Engr Appd MR	FILE NAME: 9211000A911-001T
-----------------	--------------	---------------	-----------------	--------------------------------

CODE IDENT.-00795

9211-000-A911-1