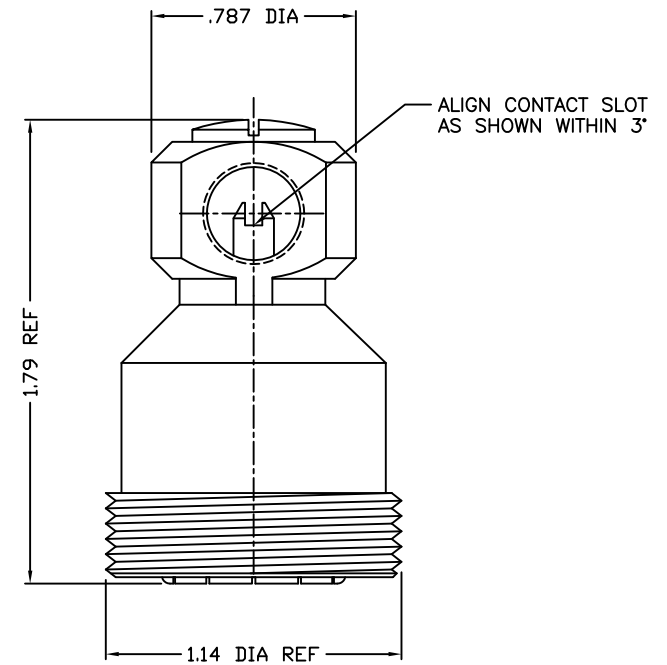
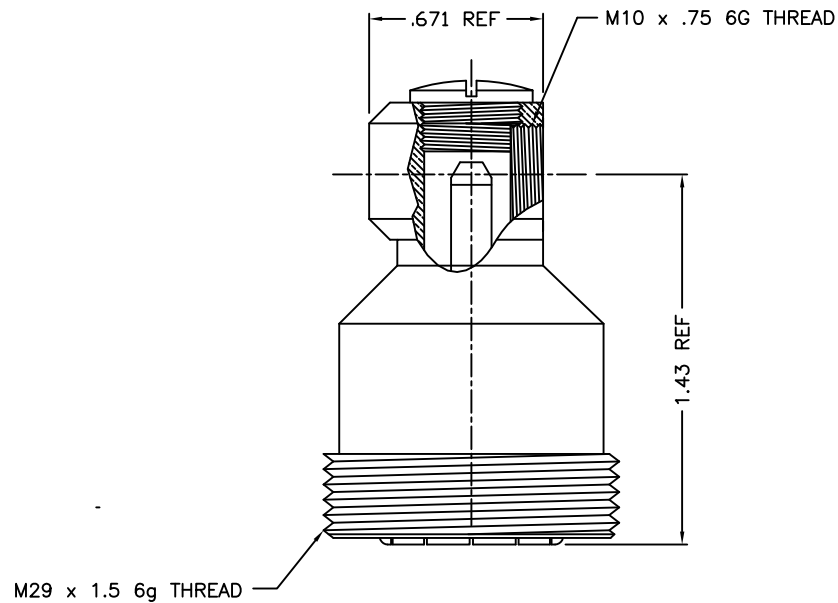




9208-000-A001



NOTES:

1. ASSEMBLED CONNECTOR INTERFACE IS DESIGNED IN ACCORDANCE WITH IEC STD PUB. 169.4.
2. MATERIAL: ALL METAL PARTS - BRASS PER ASTM B16
GASKET - SILICONE RUBBER PER ZZ-R-765
INSULATOR - TEFLON PER ASTM D1710
3. FINISHES: ALL METAL PARTS - SILVER PLATE PER QQ-S-365.

UNLESS OTHERWISE SPECIFIED: TOLERANCES: 3 PLACES = ±.005, 2 PLACES = ±.02, ANGLES = ±1/2°	-	OUTLINE	2/12/09
	ALT.	REVISIONS	DATE

DELTA ELECTRONICS MFG. CORP. Beverly, MA 01915				
TITLE: 7/16 FEMALE CONNECTOR				
Drawn by nct 9-10-96	Scale 3/4:1	Ckd. by MR	Engr Appd MR	FILE NAME: 9208000A001-000
CODE IDENT.-00795		9208-000-A001		

THESE DRAWINGS AND SPECIFICATIONS ARE THE PROPERTY OF DELTA ELECTRONICS MFG CORP. AND SHALL NOT BE REPRODUCED, OR COPIED OR USED AS THE BASIS FOR THE MANUFACTURE OR SALE OF APPARATUS OR DEVICES WITHOUT THEIR EXPRESS WRITTEN CONSENT.