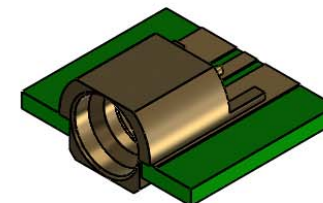
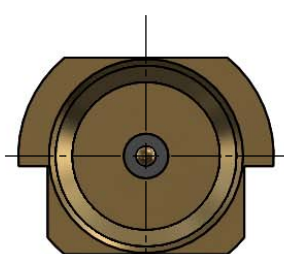
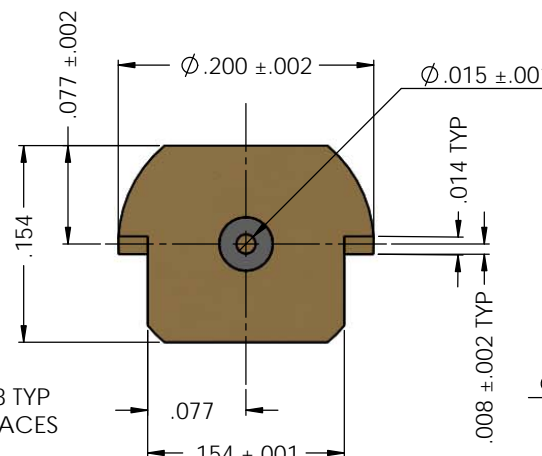
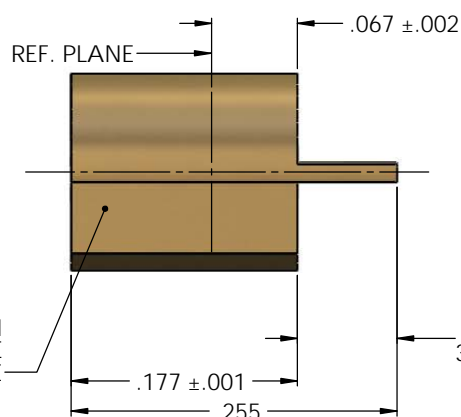




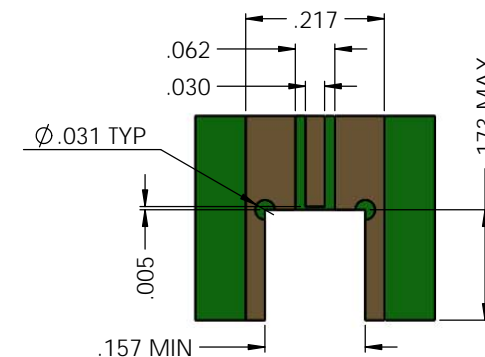
8668000G911-\*



INSTALLED VIEW

SEE APPLICABLE DASH  
NUMBER FOR SMP MALE  
INTERFACE TYPE

-003	SMOOTH BORE
-002	FULL DETENT
-001	LIMITED DETENT
*	SMP INTERFACE TYPE

RECOMMENDED PCB  
LAYOUT

## NOTES:

- ASSEMBLED CONNECTOR INTERFACE IS DESIGNED IN ACCORDANCE WITH MIL-STD-348.
- MATERIAL:  
OUTER HOUSING - STAINLESS STEEL PER ASTM 582, S30300 ALLOY, COND. A  
CONTACT AND SMP BODY - BERYLLIUM COPPER PER ASTM B196, C17300 ALLOY, CONDITION HT  
INSULATORS - TEFLON PER ASTM D1710, TYPE 1, GRADE 1, CLASS A
- FINISHES:  
HOUSING: GOLD PLATE PER ASTM B488  
CENTER PIN: GOLD PLATE PER ASTM B488

PROPRIETARY AND CONFIDENTIAL  
THE INFORMATION CONTAINED IN THIS  
DRAWING IS THE SOLE PROPERTY OF  
DELTA ELECTRONICS MFG CORP. ANY  
REPRODUCTION IN PART OR AS A WHOLE  
WITHOUT THE WRITTEN PERMISSION OF  
DELTA ELECTRONICS MFG CORP. IS  
PROHIBITED.

FILE NAME: 8668000G911-00\_1

UNLESS OTHERWISE SPECIFIED:	
DIMENSIONS ARE IN INCHES	
TOLERANCES:	
FRACTIONAL ± 1/64	
ANGULAR: MACH ± 1° BEND ± 1°	
TWO PLACE DECIMAL ± .01	
THREE PLACE DECIMAL ± .005	
SURFACE FINISH = 63	
MAX. CORNER BREAKS = .004	
THIRD ANGLE PROJECTION	
MATERIAL	SEE TABLE
FINISH	SEE TABLE
SCALE	10:1

	NAME	DATE
DRAWN	BJM	4/3/12
CHECKED	MR	4/3/12
ENG APPR.	MR	4/3/12
COMMENTS:		

DELTA ELECTRONICS MFG CORP. BEVERLY, MA 01915 www.deltar.com / Ph: 978-927-1060 / Fax: 978-922-6430		
TITLE: SMP PCB EDGE MOUNT MALE - WITH POST TERMINATION		
SIZE B	DWG. NO. 8668000G911-*	REV
CODE ID - 00795	WEIGHT: 0.00 lbs	SHEET 1 OF 1