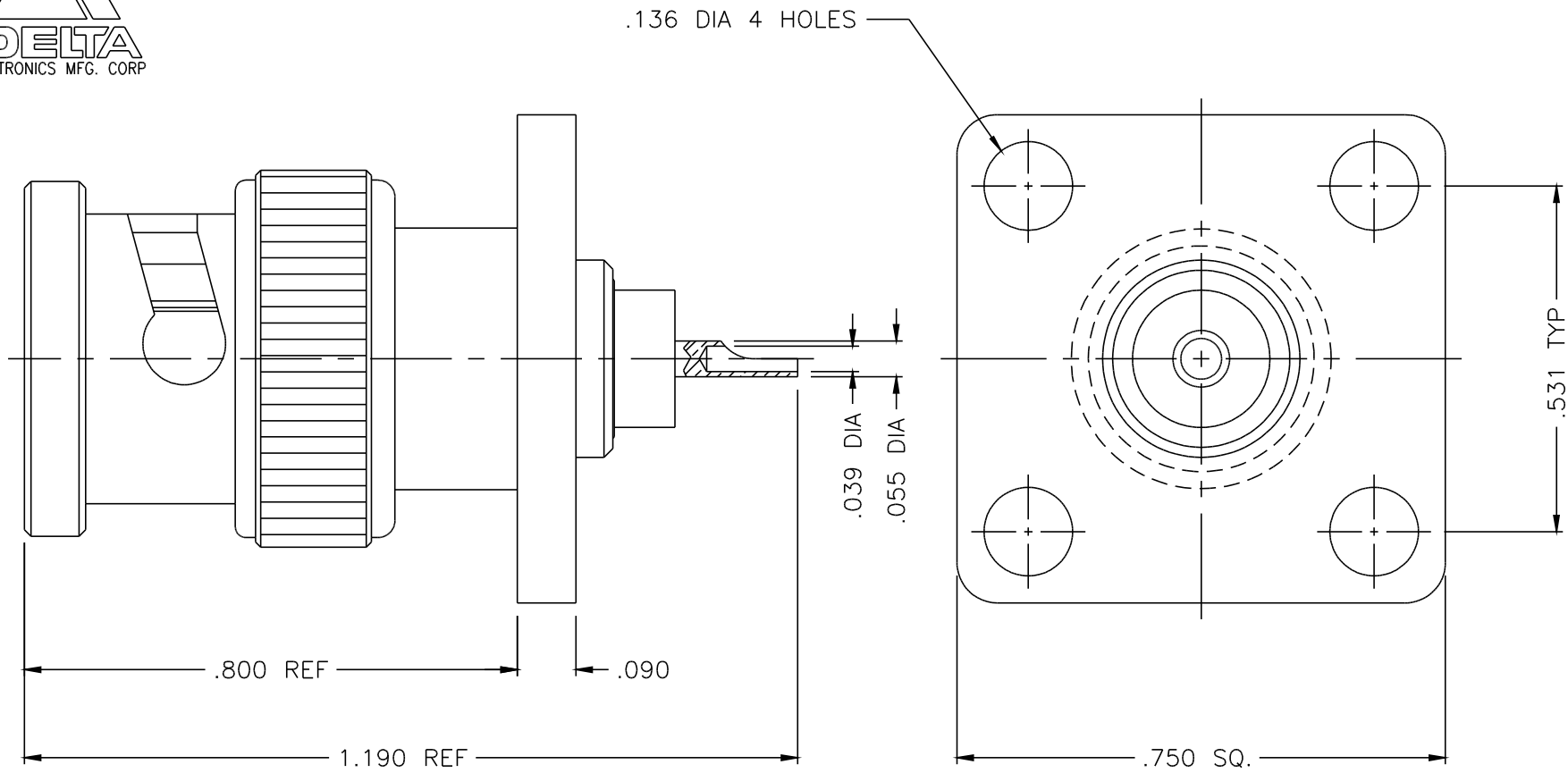




7523-000-N180



NOTES:

- ASSEMBLED CONNECTOR INTERFACE IS DESIGNED IN ACCORDANCE WITH MIL-STD-348.
- MATERIAL: CONTACT - BRASS PER ASTM B16.
INSULATORS - TEFLON PER ASTM D1710
SPRING WASHER & CONTACT FINGERS - BERYLLIUM COPPER PER ASTM B196
GASKET - SILICONE RUBBER PER ZZ-R-765
ALL OTHER METAL PARTS - BRASS PER ASTM B16
- FINISHES: CONTACT - GOLD PLATE PER MIL-G-45204
ALL OTHER METAL PARTS - NICKEL PLATE PER QQ-N-290

UNLESS OTHERWISE SPECIFIED: TOLERANCES: 3 PLACES = ±.005, 2 PLACES = ±.02, ANGLES = ±1/2°

ALT.	REVISIONS	DATE
-	OUTLINE	7/30/97

DELTA ELECTRONICS MFG. CORP. Beverly, MA 01915				
TITLE: 75Ω 'BNC' (M) PANEL PLUG RECEPTACLE WITH CAPTIVE SOLDER POT CONTACT				
Drawn by MJA	Scale 4/1	Ckd. by	Engr Appd	FILE NAME: 7523000N180-000T
7/30/97				

THESE DRAWINGS AND SPECIFICATIONS ARE THE PROPERTY OF DELTA ELECTRONICS MFG CORP. AND SHALL NOT BE REPRODUCED, OR COPIED OR USED AS THE BASIS FOR THE MANUFACTURE OR SALE OF APPARATUS OR DEVICES WITHOUT THEIR EXPRESS WRITTEN CONSENT.

CODE IDENT.-00795

7523-000-N180