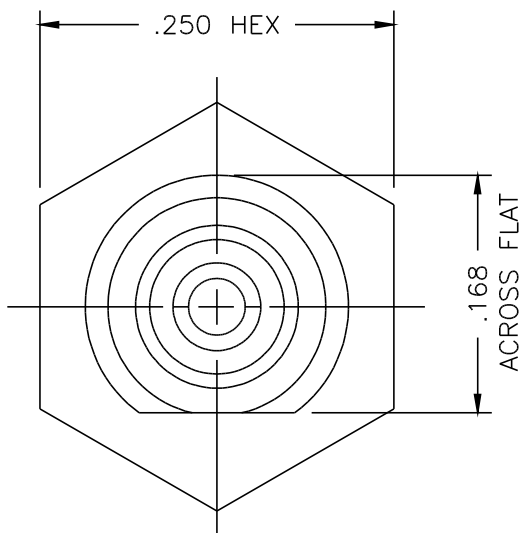


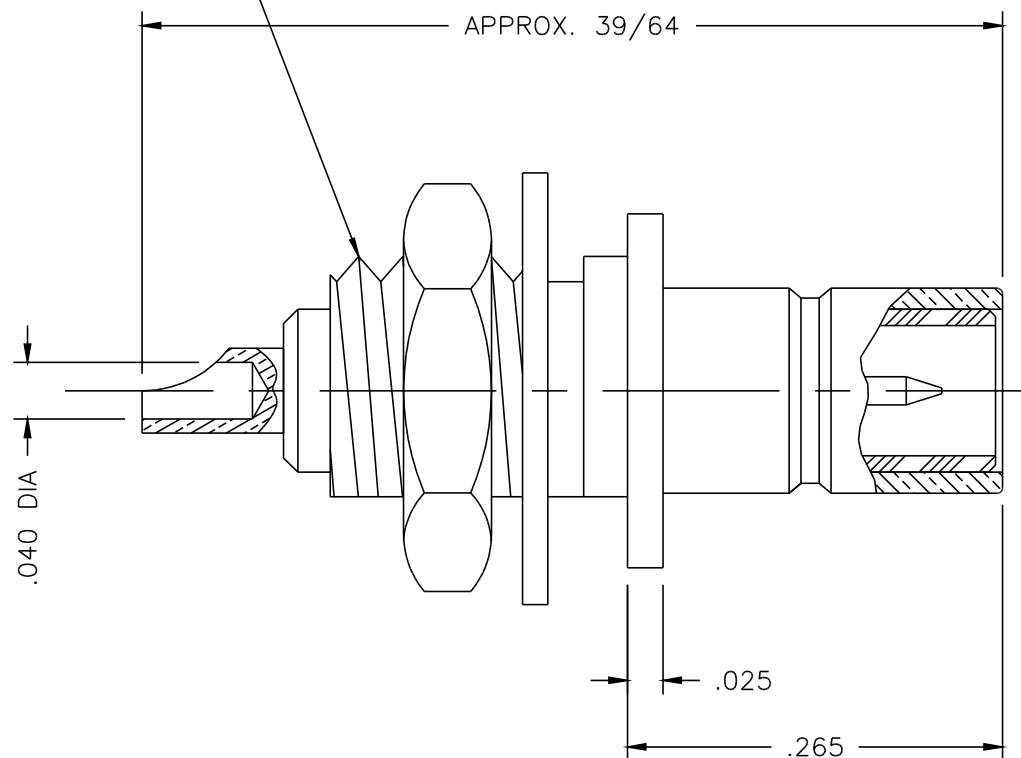


2420-000-N681



VIEW SHOWN WITH HEX NUT
AND LOCKWASHER REMOVED

10-32 UNF-2A TH'D REF



NOTES:

1. ASSEMBLED CONNECTOR INTERFACE IS DESIGNED IN ACCORDANCE WITH MIL-STD-348.
2. MATERIAL: BODY & HEX NUT- BRASS PER ASTM B16
CONTACT - BRASS PER ASTM B16.
LOCKWASHER - SPRING STEEL
INSULATOR - TEFLON PER ASTM D1710
3. FINISHES: BODY, HEX NUT & LOCKWASHER - NICKEL PLATE PER QQ-N-290
CONTACT - GOLD PLATE PER MIL-G-45204

DELTA ELECTRONICS MFG. CORP. Beverly, MA 01915

TITLE: 'SMB' BULKHEAD MOUNT JACK RECEPTACLE
SOLDERPOT TERMINAL

Drawn by
BJM
12/27/99

Scale
8/1

Ckd. by

Engr Appd

FILE NAME:
2420000N681-000T

CODE IDENT.-00795

2420-000-N681

UNLESS OTHERWISE SPECIFIED: TOLERANCES: 3 PLACES = $\pm .005$, 2 PLACES = $\pm .02$, ANGLES = $\pm 1/2^\circ$

-	OUTLINE	12/27/99
ALT.	REVISIONS	DATE

THESE DRAWINGS AND SPECIFICATIONS ARE THE PROPERTY OF DELTA ELECTRONICS MFG CORP. AND SHALL NOT BE REPRODUCED, OR COPIED
OR USED AS THE BASIS FOR THE MANUFACTURE OR SALE OF APPARATUS OR DEVICES WITHOUT THEIR EXPRESS WRITTEN CONSENT.