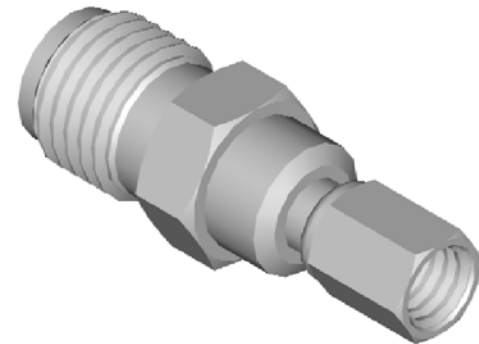
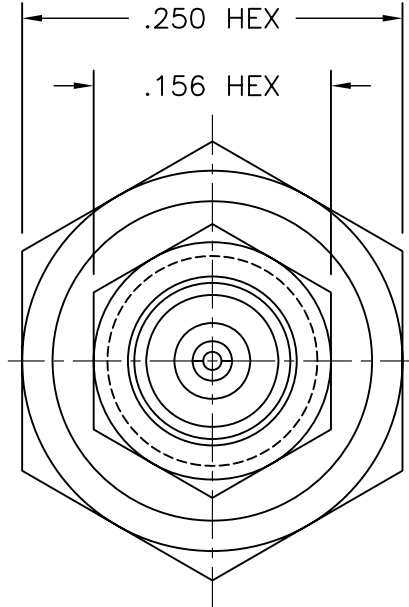
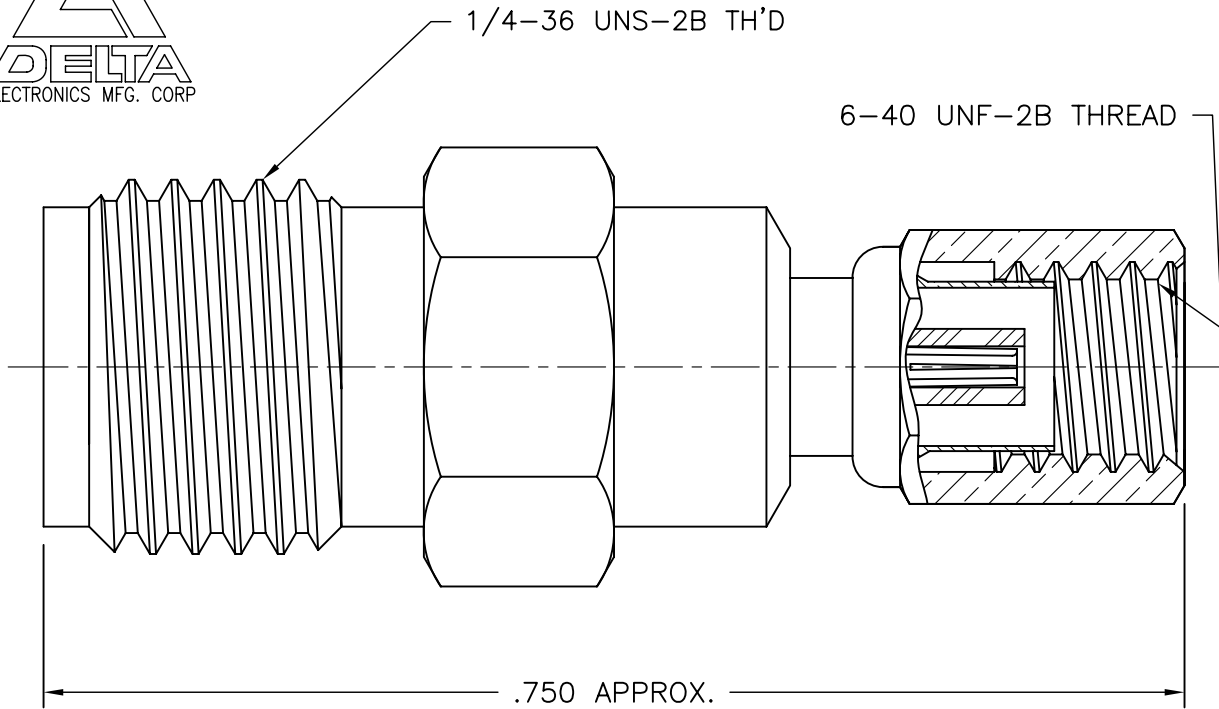




2234-000-K001-195



NOTES:

1. MATERIAL: BODY & C'NUT - CORROSION RESISTANT STEEL PER ASTM 582, S30300, COND. A.
 CONTACT - BERYLLIUM COPPER PER ASTM B196, C17300 ALLOY, TEMPER TD04.
 INSULATOR - TEFLON PER ASTM D1710, TYPE 1, GRADE 1, CLASS A.

2. FINISHES: BODY & C'NUT - PASSIVATE PER QQ-P-35.

CONTACT - COPPER FLASH .00003 MIN. THICK PER MIL-C-14550, THEN NICKEL PLATE .0001 MIN. THICK PER QQ-N-290, CLASS 1, GRADE G, THEN GOLD PLATE .00005 MIN. THICK PER MIL-G-45204, TYPE II, CLASS 1.

3. **Electrical:**

Impedance: 50 OHMS
 Frequency Range: DC-12.4 GHz
 Voltage Rating: 250 VRMS, sea level; 60 VRMS max, 70,000 ft.
 Insulation Resistance: 1000 megahms min.

Mechanical:

Durability: 500 mating cycles

| | | |
|------|-----------|----------|
| A | REVISED | 10/10/06 |
| - | OUTLINE | 10/10/06 |
| ALT. | REVISIONS | DATE |

UNLESS OTHERWISE SPECIFIED: TOLERANCES: 3 PLACES = ±.005, 2 PLACES = ±.02, ANGLES = ±1/2°, SURFACE FINISH = 63

DELTA ELECTRONICS MFG. CORP. Beverly, MA 01915

TITLE:
SMA JACK - SSMC PLUG STRAIGHT ADAPTER

| | | | | |
|-----------------------------|--------------|---------------|-----------------|--------------------------------|
| Drawn by BJM 10/10/06 | Scale 8/1 | Ckd. by MR | Engr Appd MR | FILE NAME: 2234000K001-195T |
|-----------------------------|--------------|---------------|-----------------|--------------------------------|

CODE IDENT.-00795

2234-000-K001-195

THESE DRAWINGS AND SPECIFICATIONS ARE THE PROPERTY OF DELTA ELECTRONICS MFG CORP. AND SHALL NOT BE REPRODUCED, OR COPIED OR USED AS THE BASIS FOR THE MANUFACTURE OR SALE OF APPARATUS OR DEVICES WITHOUT THEIR EXPRESS WRITTEN CONSENT.