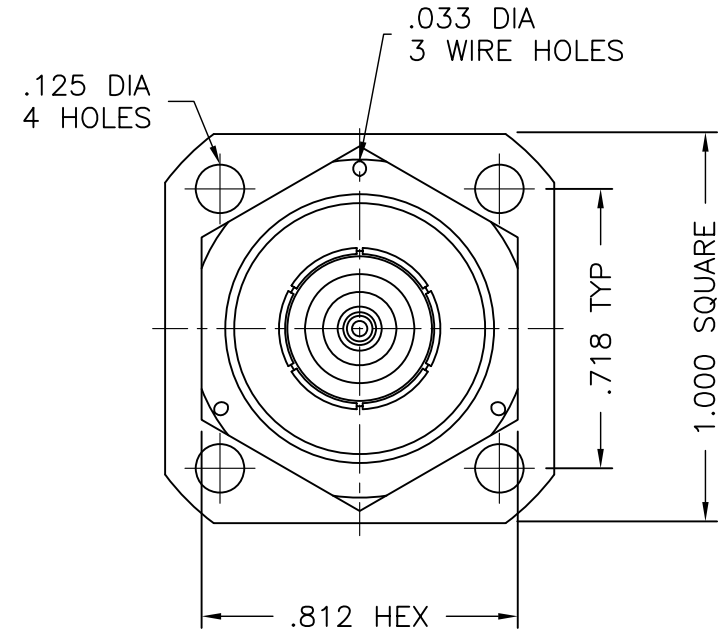
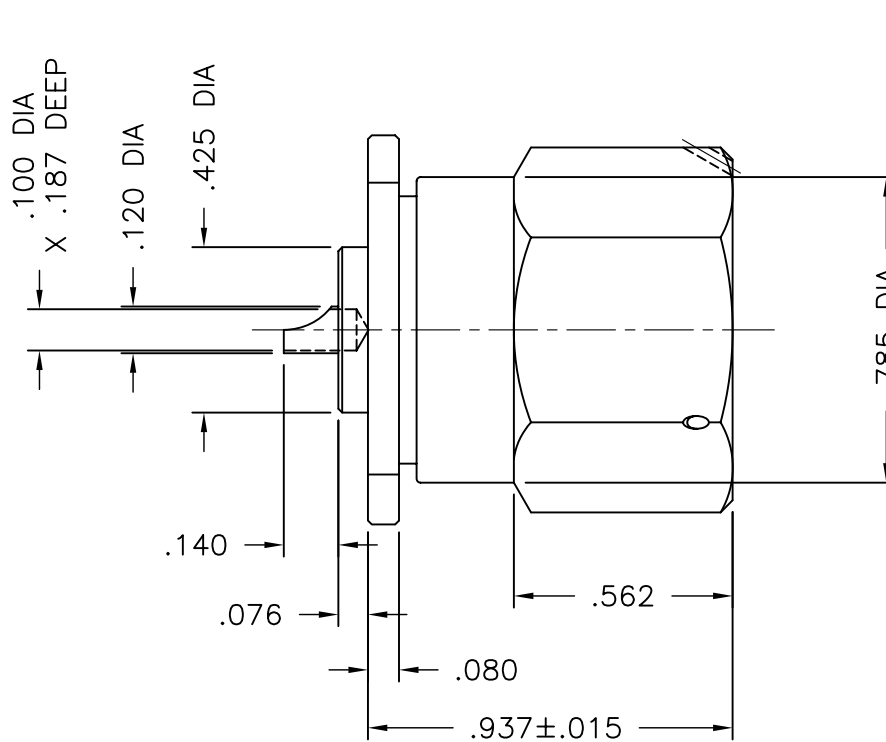




1923-000-N331



NOTES:

1. ASSEMBLED CONNECTOR INTERFACE IS DESIGNED IN ACCORDANCE WITH MIL-STD-348.
2. MATERIAL:
O'RING - SILICONE RUBBER PER ZZ-R-765
CONTACT - BRASS PER ASTM B16
INSULATOR - TEFLON PER ASTM D1710
LOCKING RING - PHOSPHOR BRONZE PER QQ-B-750
ALL OTHER METAL PARTS - BRASS PER ASTM B16
3. FINISHES:
CONTACT - GOLD PLATE PER MIL-G-45204
ALL OTHER METAL PARTS - NICKEL PLATE PER QQ-N-290

UNLESS OTHERWISE SPECIFIED: TOLERANCES: 3 PLACES = ± 0.05 , 2 PLACES = ± 0.02 , ANGLES = $\pm 1/2^\circ$, SURFACE FINISH = 63

-	OUTLINE	11/26/07
ALT.	REVISIONS	DATE

THESE DRAWINGS AND SPECIFICATIONS ARE THE PROPERTY OF DELTA ELECTRONICS MFG CORP. AND SHALL NOT BE REPRODUCED, OR COPIED OR USED AS THE BASIS FOR THE MANUFACTURE OR SALE OF APPARATUS OR DEVICES WITHOUT THEIR EXPRESS WRITTEN CONSENT.

DELTA ELECTRONICS MFG. CORP. Beverly, MA 01915

TITLE: "SC" PANEL MOUNTED PLUG RECEPTACLE
SOLDER POT CONTACT

Drawn by BJM 11/26/07	Scale 4/1	Ckd. by MR	Engr Appd MR	FILE NAME: 1923000N331-000T
-----------------------------	--------------	---------------	-----------------	--------------------------------

CODE IDENT.-00795

1923-000-N331