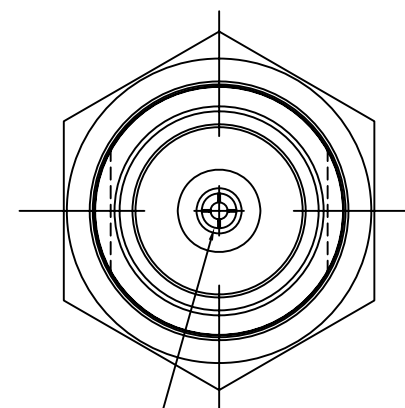
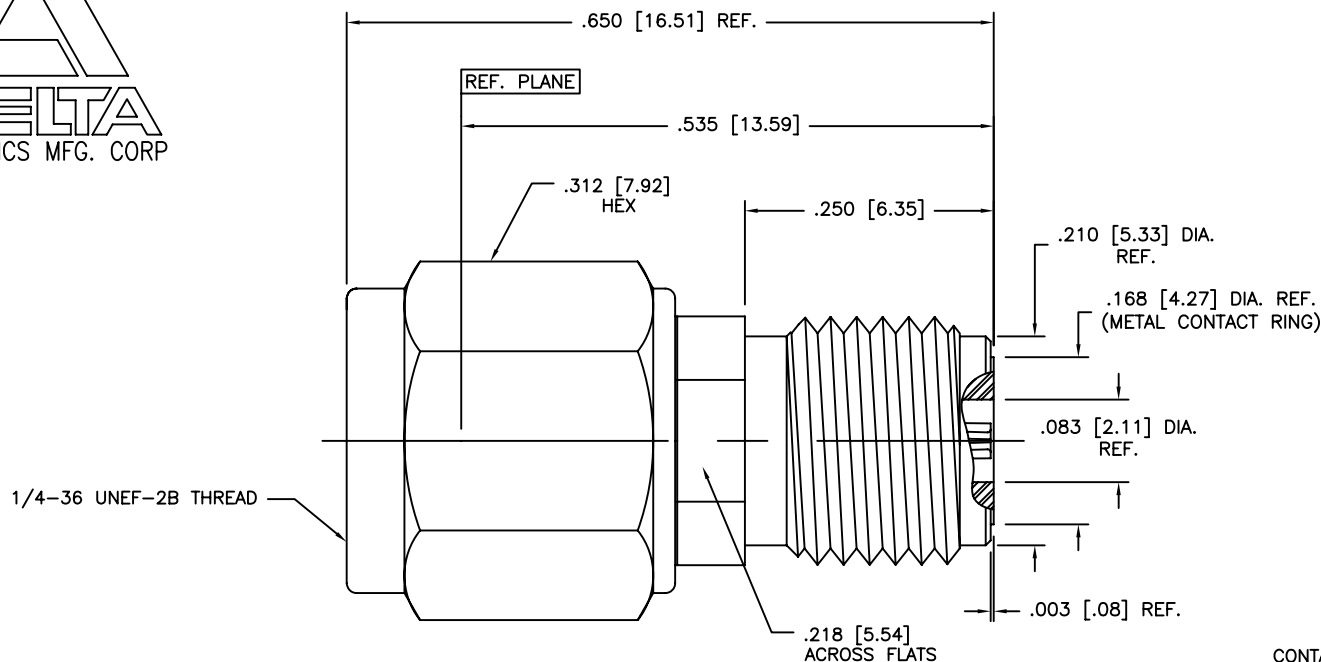




DIMENSIONS IN BRACKETS ARE IN MILLIMETERS AND ARE FOR REFERENCE ONLY.

1397-000-K821-003



CONTACT TO ACCEPT
.018 [0.46] DIA. PIN
.090 [2.3] LONG MAX.

NOTES:

- CONNECTOR INTERFACE IS DESIGNED IN ACCORDANCE WITH MIL-STD-348.
- MATERIAL: BODY, COUPLING NUT & BUSHING - CORROSION RESISTANT STEEL, PER ASTM A582, TYPE 303
CONTACT - BERYLLIUM COPPER, ALLOY C17300 PER ASTM B196.
LOCKING RING - BERYLLIUM COPPER, PER ASTM B196
GASKET - SILICONE RUBBER, PER A-A-59588
INSULATORS - TEFLON (PTFE), PER ASTM D1710
- ULTEM 1000 (PEI), PER ASTM D5205
- FINISHES: BODY, COUPLING NUT & BUSHING - PASSIVATE PER AMS-QQ-P-35
CONTACT - GOLD PLATE PER MIL-G-45204

4. ELECTRICAL DATA:

FREQUENCY: DC TO 27.0 GHz
VSWR: DC TO 18.0 GHz - 1.10:1 MAX.
18.0 TO 27.0 GHz - 1.15:1 MAX.
INSERTION LOSS: $.03 \sqrt{f(\text{GHz})}$ dB MAXIMUM
INSULATION RESISTANCE: 5,000 MEGOHMS MINIMUM
VOLTAGE RATING: 1,000 Vrms MINIMUM AT SEA LEVEL,
250 Vrms MINIMUM AT 70,000 FEET
DIELECTRIC WITHSTANDING VOLTAGE: 1,000 Vrms MINIMUM
RF LEAKAGE: -100 dB MIN.

DELTA ELECTRONICS MFG. CORP. Beverly, MA 01915

TITLE: 'SMA' THREAD-IN, PANEL MOUNT RECEPTACLE (M)
FIELD REPLACEABLE - ACCEPTS .018 DIA. PIN

MATERIAL: SEE NOTE 2

FINISH: SEE NOTE 3

UNLESS OTHERWISE SPECIFIED: TOLERANCES: 3 PLACES = $\pm .005$, 2 PLACES = $\pm .02$, ANGLES = $\pm 1/2^\circ$, SURFACE FINISH = 63

-	OUTLINE	11/16/06
ALT.	REVISIONS	DATE

-	REL ERN	X			
ALT.	REVISIONS	DATE	ENGR APPD	MFG APPD	

BJM STM 9/11/06	Scale 8/1	Ckd. by	Mfg. Appd.	Engr. Appd.
-----------------------	--------------	---------	------------	-------------

THESE DRAWINGS AND SPECIFICATIONS ARE THE PROPERTY OF DELTA ELECTRONICS MFG CORP. AND SHALL NOT BE REPRODUCED, OR COPIED OR USED AS THE BASIS FOR THE MANUFACTURE OR SALE OF APPARATUS OR DEVICES WITHOUT THEIR EXPRESS WRITTEN CONSENT.

FILE NAME: 1397000K821-003T PLT 8/1

CODE IDENT.-00795

1397-000-K821-003