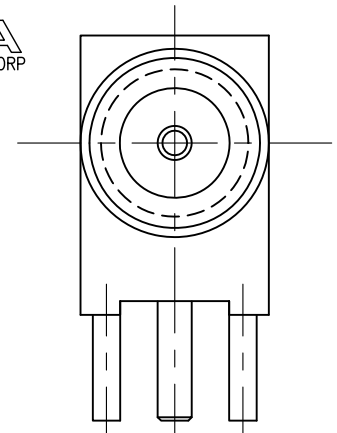
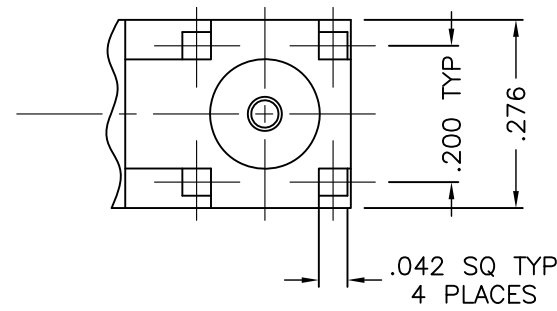
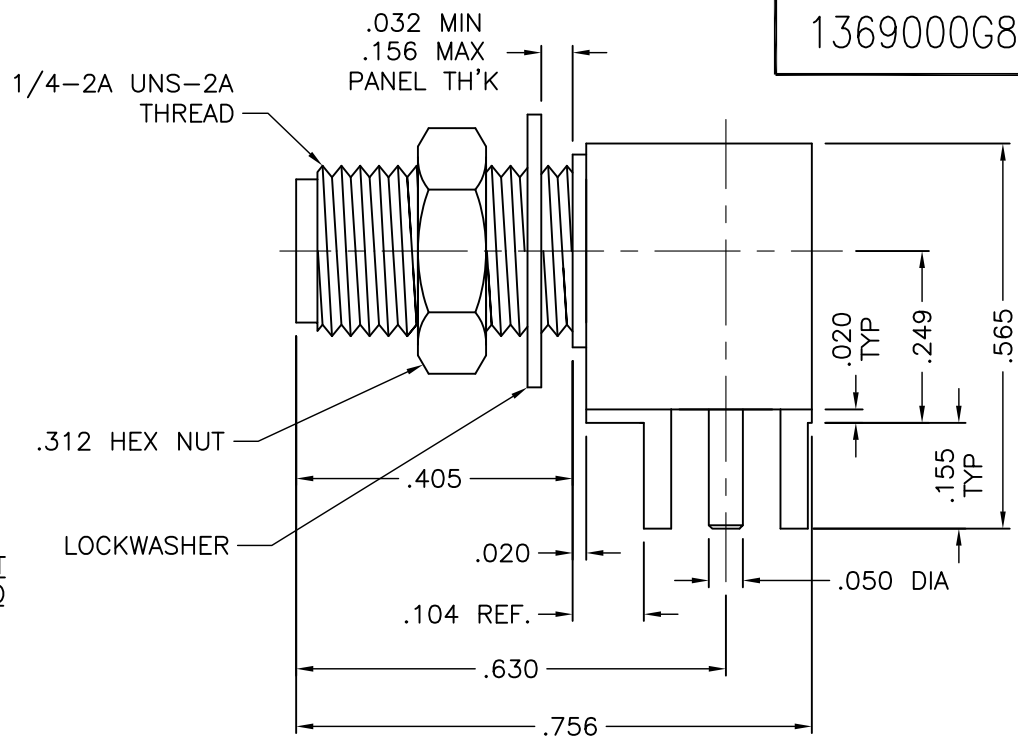
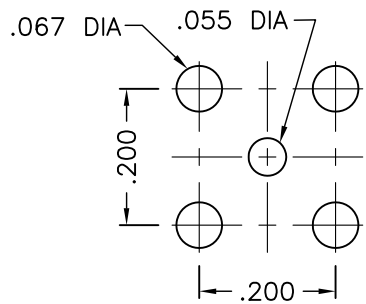




1369000G821-500



VIEW SHOWN WITH HEX NUT AND LOCKWASHER REMOVED



NOTES: RECOMMENDED MOUNTING HOLE

1. ASSEMBLED CONNECTOR INTERFACE IS DESIGNED IN ACCORDANCE WITH MIL-STD-348.
2. MATERIAL: BODIES, HEX NUT & LOCKWASHER - BRASS PER ASTM B16
CONTACT - BERYLLIUM COPPER PER ASTM B196.
INSULATORS - TEFLON PER ASTM D4894
3. FINISHES: CONTACT - GOLD PLATE PER ASTM B488, .00003 MIN THICK, OVER NICKEL PLATE PER SAE-AMS-QQ-N-290, .00005 MIN. THICK OVER COPPER PLATE PER MIL-C-14550, .00003 MIN. THICK
ALL OTHER METAL PARTS - GOLD PLATE PER ASTM B488, .000003 MIN THICK, OVER NICKEL PLATE PER SAE-AMS-QQ-N-290, .00005 MIN. THICK OVER COPPER PLATE PER MIL-C-14550, .00003 MIN. THICK.

UNLESS OTHERWISE SPECIFIED: TOLERANCES: 3 PLACES = ±.005, 2 PLACES = ±.02, ANGLES = ±1/2°, SURFACE FINISH = 63

B	REVISED	11/18/10
A	REVISED	9/8/04
-	OUTLINE	9/3/04
ALT.	REVISIONS	DATE

DELTA ELECTRONICS MFG. CORP. Beverly, MA 01915				
TITLE: "SMA" E-LINE P.C.B. RT. ANGLE B'HEAD MOUNT JACK RECEPTACLE				
Drawn by BJM	Scale 4/1	Ckd. by MR	Engr Appd MR	FILE NAME: 1369000G821-500T

THESE DRAWINGS AND SPECIFICATIONS ARE THE PROPERTY OF DELTA ELECTRONICS MFG CORP. AND SHALL NOT BE REPRODUCED, OR COPIED OR USED AS THE BASIS FOR THE MANUFACTURE OR SALE OF APPARATUS OR DEVICES WITHOUT THEIR EXPRESS WRITTEN CONSENT.

CODE IDENT.-00795 1369000G821-500