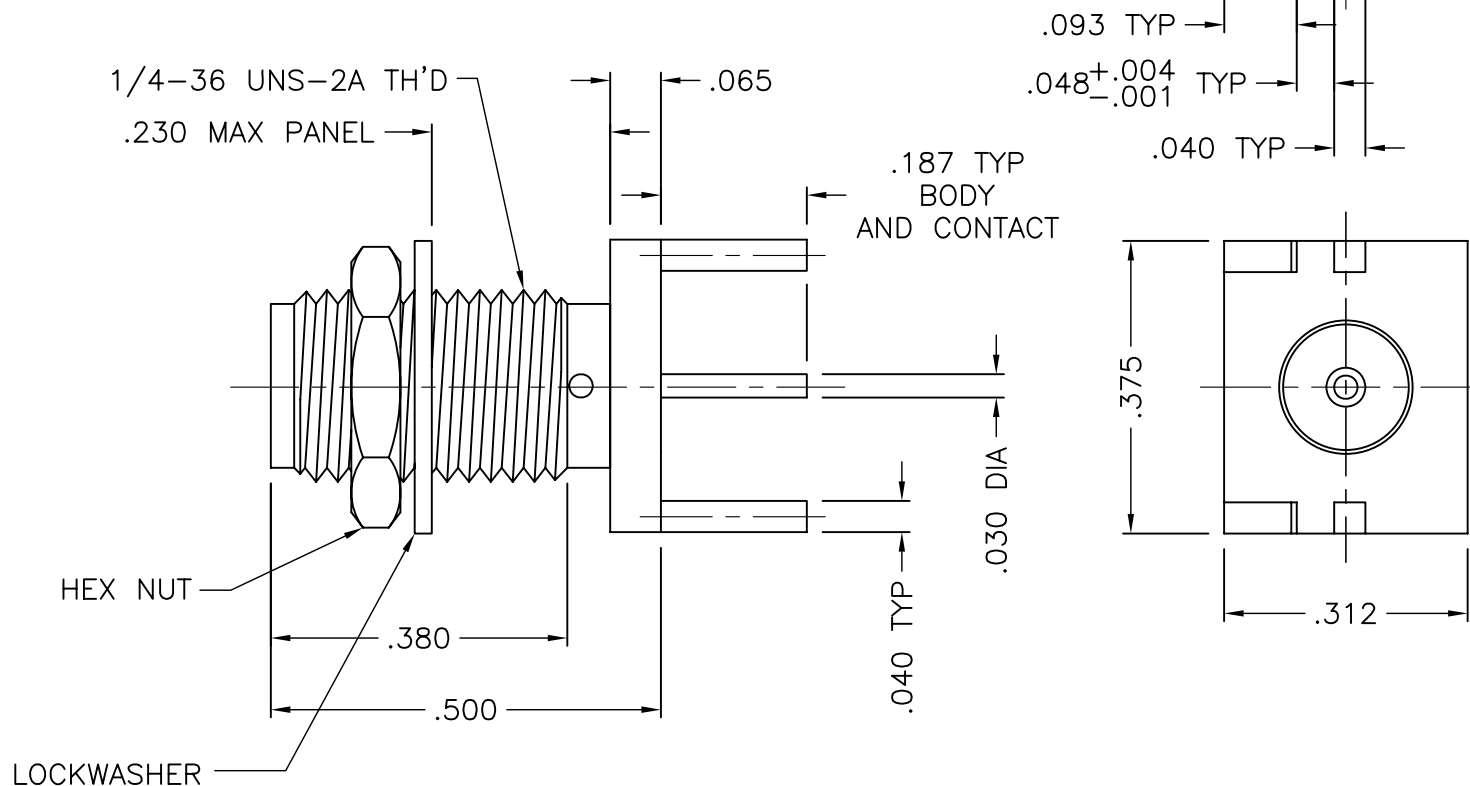




1367-000-G91P-21



NOTES:

1. ASSEMBLED CONNECTOR INTERFACE IS DESIGNED IN ACCORDANCE WITH MIL-STD-348.
2. MATERIAL: BODY - BRASS PER ASTM B16
CONTACT - BERYLLIUM COPPER PER ASTM B196
INSULATOR - TEFLON PER ASTM D1710
3. FINISHES: BODY & CONTACT - GOLD PLATE PER MIL-G-45204

UNLESS OTHERWISE SPECIFIED: TOLERANCES: 3 PLACES = $\pm .005$, 2 PLACES = $\pm .02$, ANGLES = $\pm 1/2^\circ$, SURFACE FINISH = 63

ALT.	REVISIONS	DATE
-	OUTLINE	10/3/06

THESE DRAWINGS AND SPECIFICATIONS ARE THE PROPERTY OF DELTA ELECTRONICS MFG CORP. AND SHALL NOT BE REPRODUCED, OR COPIED OR USED AS THE BASIS FOR THE MANUFACTURE OR SALE OF APPARATUS OR DEVICES WITHOUT THEIR EXPRESS WRITTEN CONSENT.

DELTA ELECTRONICS MFG. CORP. Beverly, MA 01915

TITLE: SMA END-LAUNCH BULKHEAD JACK RECEPTACLE -
POST CONTACT - FOR .042 TH'K BOARD

Drawn by BJM 10/3/06	Scale 4/1	Ckd. by MR	Engr Appd MR	FILE NAME: 1367000G91P-021T
----------------------------	--------------	---------------	-----------------	--------------------------------

CODE IDENT.-00795

1367-000-G91P-21