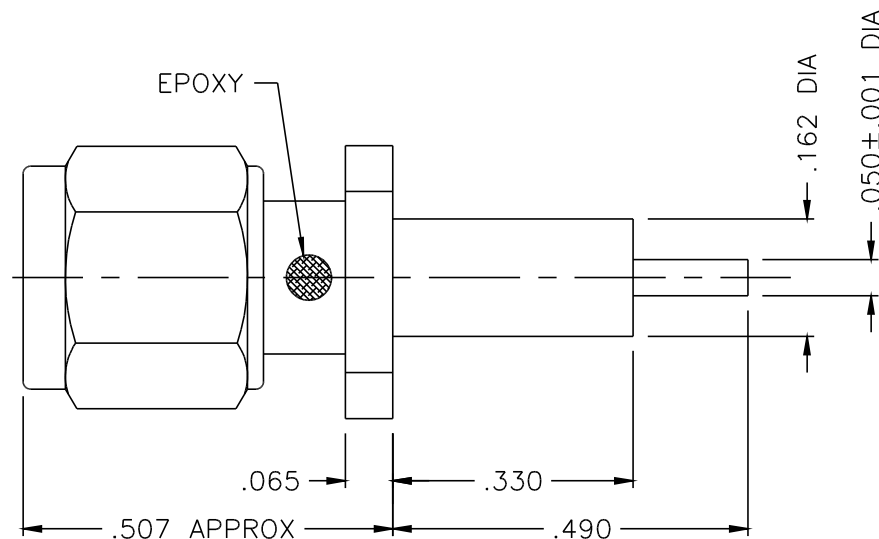
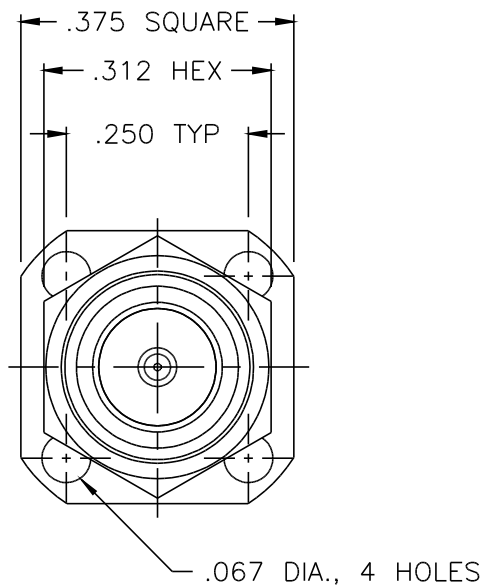




1359-000-G911-15



NOTES:

1. ASSEMBLED CONNECTOR INTERFACE IS DESIGNED IN ACCORDANCE WITH MIL-STD-348.
2. MATERIAL: BODY & COUPLING NUT- CORROSION RESISTANT STEEL PER ASTM A582  
CONTACT- BRASS PER ASTM B16.  
GASKET- SILICONE RUBBER PER ZZ-R-765  
INSULATOR- TEFLON PER ASTM D1710
3. FINISHES: BODY, CONTACT & COUPLING NUT- GOLD PLATE PER MIL-G-45204

UNLESS OTHERWISE SPECIFIED: TOLERANCES: 3 PLACES = ±.005, 2 PLACES = ±.02, ANGLES = ±1/2°, SURFACE FINISH = 63

-	OUTLINE	11/30/01
ALT.	REVISIONS	DATE

THESE DRAWINGS AND SPECIFICATIONS ARE THE PROPERTY OF DELTA ELECTRONICS MFG CORP. AND SHALL NOT BE REPRODUCED, OR COPIED OR USED AS THE BASIS FOR THE MANUFACTURE OR SALE OF APPARATUS OR DEVICES WITHOUT THEIR EXPRESS WRITTEN CONSENT.

DELTA ELECTRONICS MFG. CORP. Beverly, MA 01915					
TITLE: 'SMA' PANEL MOUNTED PLUG RECEPTACLE WITH EXTENDED/POST CONTACT					
1	Drawn by BJM 11/30/01	Scale 4/1	Ckd. by	Engr Appd	FILE NAME: 1359000G911-015T
CODE IDENT.-00795			1359-000-G911-15		