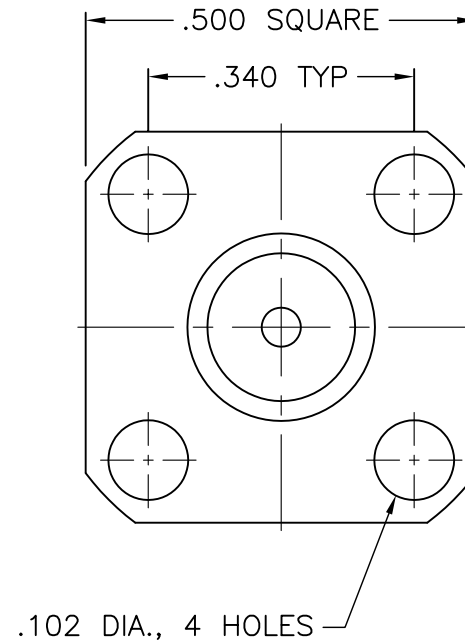
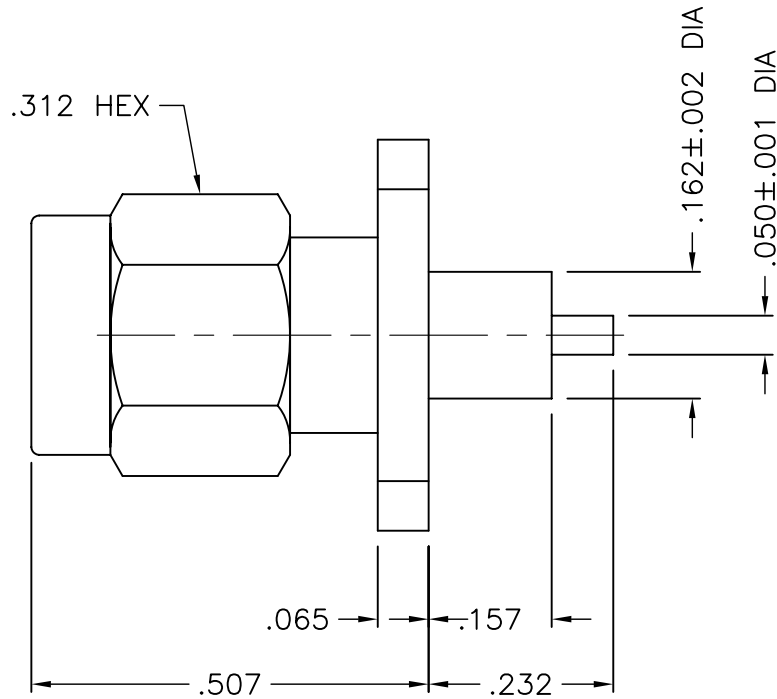




1359-000-G051-500



NOTES:

1. ASSEMBLED CONNECTOR INTERFACE IS DESIGNED IN ACCORDANCE WITH MIL-STD-348.
2. MATERIAL: INSULATOR - TEFLON PER ASTM D1710
CONTACT - BERYLLIUM COPPER PER ASTM B196.
ALL OTHER METAL PARTS - BRASS PER ASTM B16
3. FINISHES: ALL METAL PARTS - GOLD PLATE PER MIL-G-45204

UNLESS OTHERWISE SPECIFIED: TOLERANCES: 3 PLACES = ±.005, 2 PLACES = ±.02, ANGLES = ±1/2°, SURFACE FINISH = 63	-	OUTLINE	12/9/05
	ALT.	REVISIONS	DATE

DELTA ELECTRONICS MFG. CORP. Beverly, MA 01915				
TITLE: SMA PANEL MOUNT PLUG RECEPTACLE - POST CONTACT				
Drawn by BJM 12/9/05	Scale 4/1	Ckd. by MR	Engr Appd MR	FILE NAME: 1359000G051-500T

THESE DRAWINGS AND SPECIFICATIONS ARE THE PROPERTY OF DELTA ELECTRONICS MFG CORP. AND SHALL NOT BE REPRODUCED, OR COPIED OR USED AS THE BASIS FOR THE MANUFACTURE OR SALE OF APPARATUS OR DEVICES WITHOUT THEIR EXPRESS WRITTEN CONSENT.

CODE IDENT.-00795 1359-000-G051-500