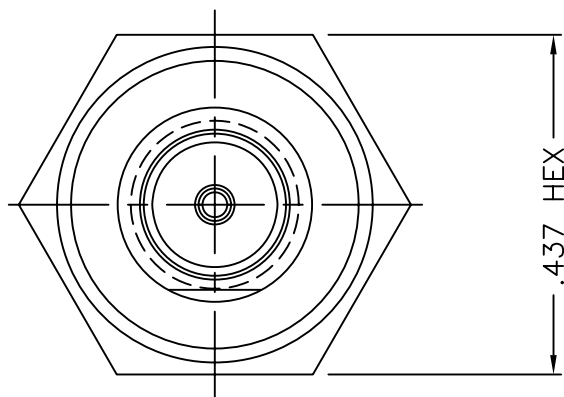
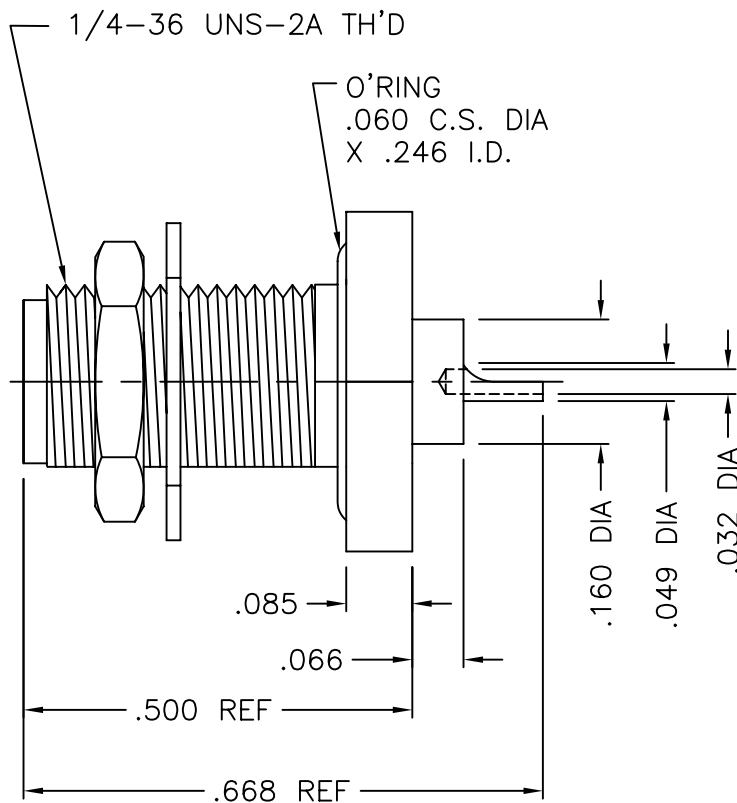




1320-000-K821-11



VIEW SHOWN WITH HEX NUT
AND LOCKWASHER REMOVED



NOTES:

1. ASSEMBLED CONNECTOR INTERFACE IS DESIGNED IN ACCORDANCE WITH MIL-STD-348
2. MATERIAL: BODY, HEX NUT & LOCKWASHER - CORROSION RESISTANT STEEL PER ASTM A582
CONTACT - BERYLLIUM COPPER PER ASTM B196.
O'RING - SILICONE RUBBER PER ZZ-R-765
INSULATOR - TEFLON PER ASTM D1710
3. FINISHES: CONTACT - GOLD PLATE PER MIL-G-45204
ALL OTHER METAL PARTS - PASSIVATE PER QQ-P-35

A	REVISED	1/23/08
-	OUTLINE	7/20/06
ALT.	REVISIONS	DATE

UNLESS OTHERWISE SPECIFIED: TOLERANCES: 3 PLACES = $\pm .005$, 2 PLACES = $\pm .02$, ANGLES = $\pm 1/2^\circ$, SURFACE FINISH = 63

THESE DRAWINGS AND SPECIFICATIONS ARE THE PROPERTY OF DELTA ELECTRONICS MFG CORP. AND SHALL NOT BE REPRODUCED, OR COPIED OR USED AS THE BASIS FOR THE MANUFACTURE OR SALE OF APPARATUS OR DEVICES WITHOUT THEIR EXPRESS WRITTEN CONSENT.

DELTA ELECTRONICS MFG. CORP. Beverly, MA 01915

TITLE: SMA BULKHEAD JACK RECEPTACLE
- SOLDER POT CONTACT

Drawn by DG 7/20/06	Scale 4/1	Ckd. by MR	Engr Appd MR	FILE NAME: 1320000K821-011T
---------------------------	--------------	---------------	-----------------	--------------------------------

CODE IDENT.-00795

1320-000-K821-11