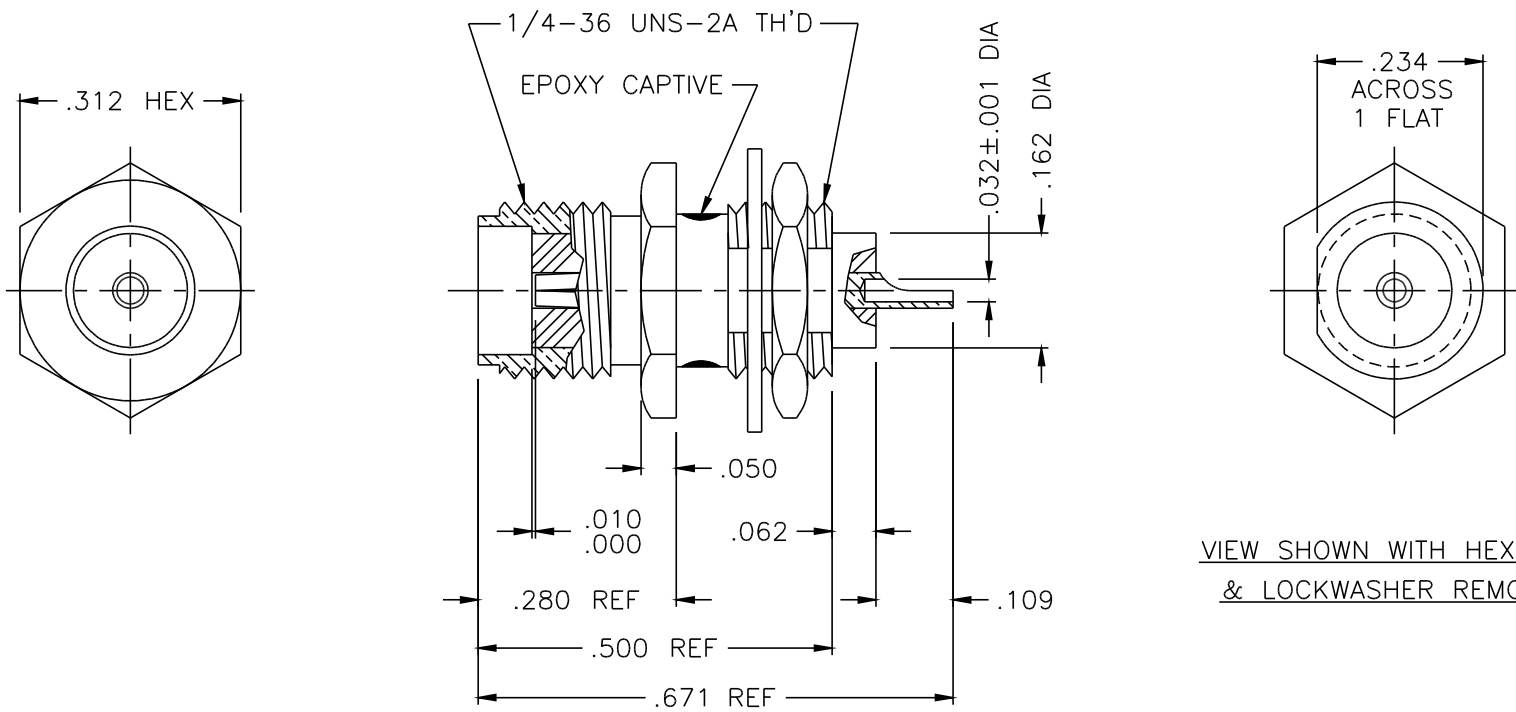




1320-000-K671-5



VIEW SHOWN WITH HEX. NUT  
& LOCKWASHER REMOVED

NOTES:

1. ASSEMBLED CONNECTOR INTERFACE IS DESIGNED IN ACCORDANCE WITH MIL-STD-348.
2. MATERIAL: BODY & HEX NUT - CORROSION RESISTANT STEEL PER ASTM A582  
 LOCKWASHER - SPRING STEEL  
 CONTACT - BERYLLIUM COPPER PER ASTM B196.  
 INSULATOR - TEFLON PER ASTM D1710
3. FINISHES: BODY, HEX NUT & LOCKWASHER - PASSIVATE PER QQ-P-35  
 CONTACT - GOLD PLATE PER MIL-G-45204

DELTA ELECTRONICS MFG. CORP. Beverly, MA 01915					
TITLE: 'SMA' (F) CAPTIVE CONTACT BULKHEAD RECEPTACLE W/SOLDER POT CONTACT					
Drawn by RWP	Scale 4/1	Ckd. by	Engr Appd	FILE NAME: 1320000K671-005T	
7/12/96					
CODE IDENT: 00795		1320-000-K671-5			

UNLESS OTHERWISE SPECIFIED: TOLERANCES: 3 PLACES = ±.005, 2 PLACES = ±.02, ANGLES = ±1/2°

ALT.	REVISIONS	DATE
-	OUTLINE	7/12/96

THESE DRAWINGS AND SPECIFICATIONS ARE THE PROPERTY OF DELTA ELECTRONICS MFG CORP. AND SHALL NOT BE REPRODUCED, OR COPIED OR USED AS THE BASIS FOR THE MANUFACTURE OR SALE OF APPARATUS OR DEVICES WITHOUT THEIR EXPRESS WRITTEN CONSENT.