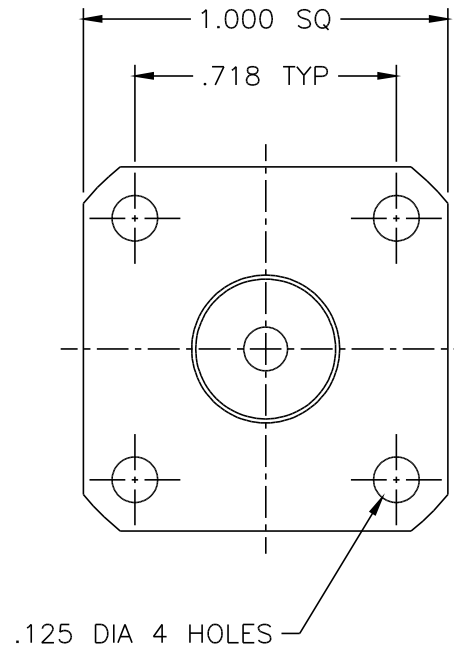
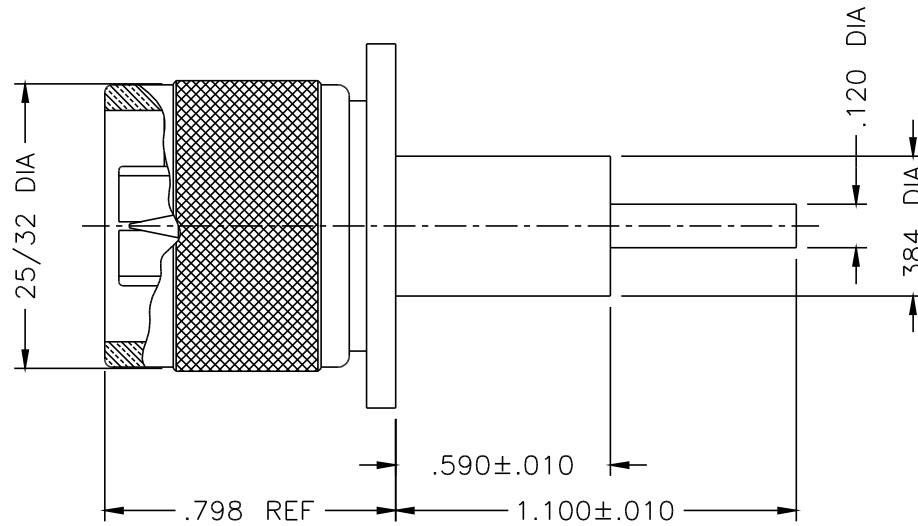




1159-000-N331-6



NOTES:

1. ASSEMBLED CONNECTOR INTERFACE IS DESIGNED IN ACCORDANCE WITH MIL-STD-348.
2. MATERIAL: ALL METAL PARTS- BRASS PER ASTM B16
GASKET- SILICONE RUBBER PER ZZ-R-765
INSULATOR- TEFLON PER ASTM D1710
3. FINISHES: CONTACT- GOLD PLATE PER MIL-G-45204
ALL OTHER METAL PARTS- NICKEL PLATE PER QQ-N-290

-	OUTLINE	9/7/95
ALT.	REVISIONS	DATE

DELTA ELECTRONICS MFG. CORP. Beverly, MA 01915			
TITLE: 'N' (M) PANEL MOUNT RECEPTACLE EPOXY CAPTIVATED CENTER CONTACT			
Drawn by dgb 9/7/95	Scale 2/1	Ckd. by	FILE NAME: 1159000N331-006T
CODE IDENT.-00795		1159-000-N331-6	

TOLERANCES UNLESS OTHERWISE SPECIFIED:
3 PLACES = ±.005
2 PLACES = ±.01
ANGLES = ±1/2°

THESE DRAWINGS AND SPECIFICATIONS ARE THE PROPERTY OF DELTA ELECTRONICS MFG. CORP. AND SHALL NOT BE REPRODUCED, OR COPIED, OR USED AS THE BASIS FOR THE MANUFACTURE OR SALE OF APPARATUS OR DEVICES WITHOUT THEIR EXPRESS WRITTEN CONSENT.