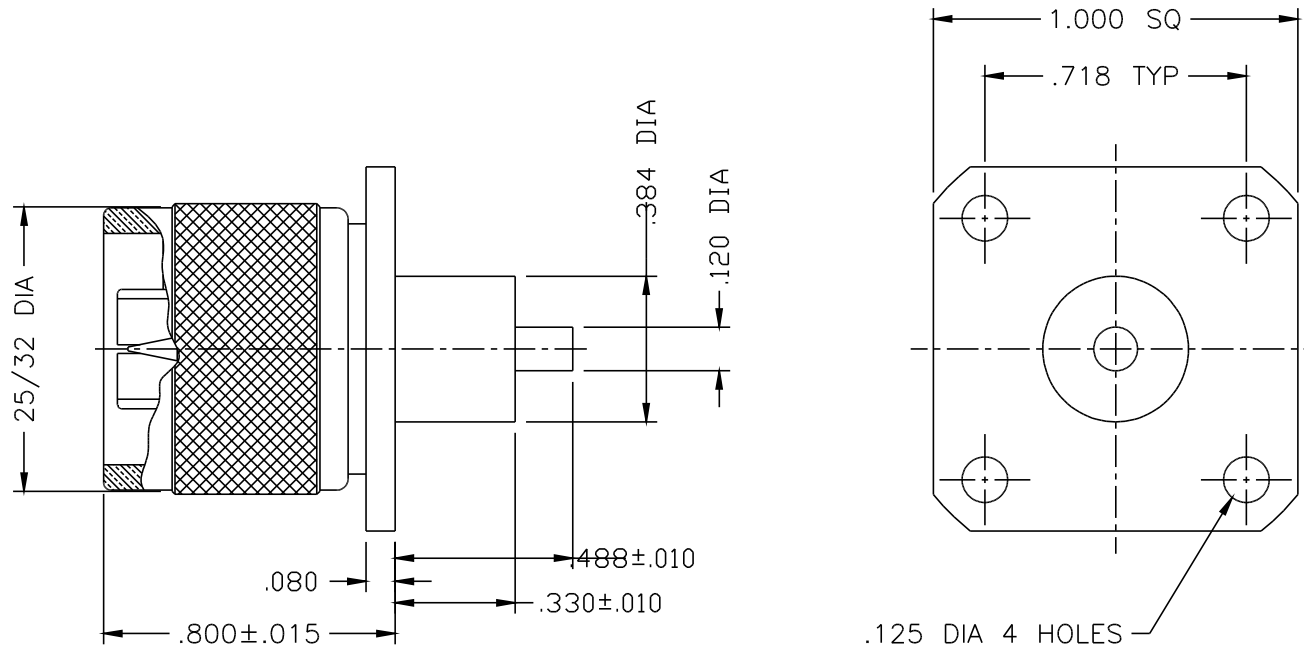




1159-000-N330-11



NOTES:

1. ASSEMBLED CONNECTOR INTERFACE IS DESIGNED IN ACCORDANCE WITH MIL-STD-348.
2. MATERIAL: ALL METAL PARTS- BRASS PER ASTM B16  
GASKET- SILICONE RUBBER PER ZZ-R-765  
INSULATOR- TEFLON PER ASTM D1710
3. FINISHES: CONTACT- GOLD PLATE PER MIL-G-45204  
ALL OTHER METAL PARTS- NICKEL PLATE PER QQ-N-290
4. CONTACT SHIPPED LOOSE

-	OUTLINE	9/19/96
ALT.	REVISIONS	DATE

DELTA ELECTRONICS MFG. CORP. Beverly, MA 01915			
TITLE: 'N' (M) PANEL MOUNT RECEPTACLE NON-CAPTIVE POST CONTACT			
Drawn by MR 9/19/96	Scale 2/1	Ckd. by	FILE NAME: 1159000N330-011T
CODE IDENT.-00795		1159-000-N330-11	

TOLERANCES  
UNLESS OTHERWISE  
SPECIFIED:  
3 PLACES = ±.005  
2 PLACES = ±.01  
ANGLES = ±1/2°

THESE DRAWINGS AND SPECIFICATIONS ARE THE PROPERTY OF DELTA ELECTRONICS MFG. CORP. AND SHALL NOT BE REPRODUCED, OR COPIED, OR USED AS THE BASIS FOR THE MANUFACTURE OR SALE OF APPARATUS OR DEVICES WITHOUT THEIR EXPRESS WRITTEN CONSENT.