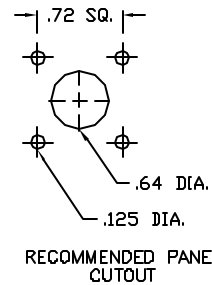
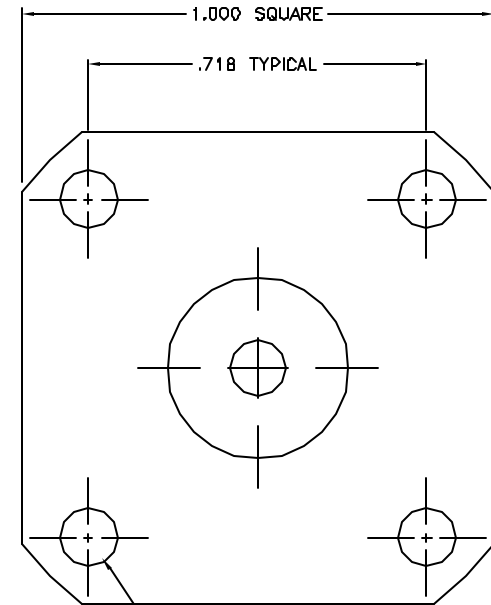
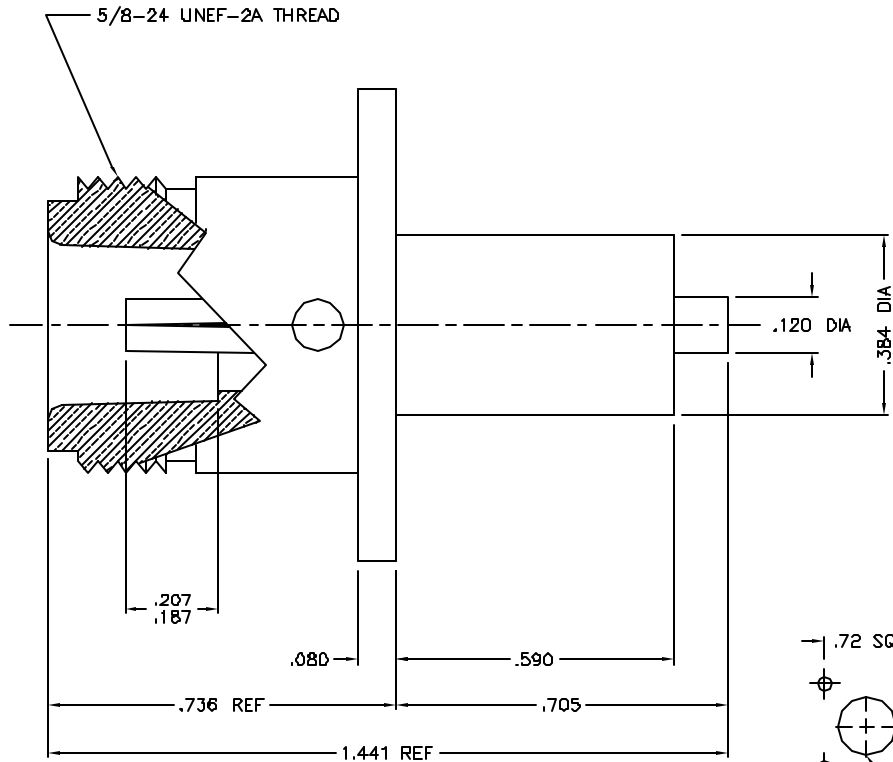


1158-000-N331-15



NOTES:

1. INTERFACE PER MIL-STD-348.

2. MATERIALS & FINISHES:

- BODY - BRASS, ASTM B16
- NICKEL PLATED PER QQ-N-290
- CONTACT - BERYLLIUM COPPER, ASTM B196
- GOLD PLATED PER MIL-G-45204
- INSULATOR - TEFLON, ASTM D1710.

3. ELECTRICAL:

- NOMINAL IMPEDANCE: 50 OHMS
- FREQUENCY RANGE: DC -11 GHz
- VOLTAGE RATING: 1,000 VOLTS RMS
- DIELECTRIC WITHSTANDING VOLTAGE: 2,500 VOLTS RMS
- INSULATION RESISTANCE: 5,000 MEGOHMS

TOLERANCES: UNLESS OTHERWISE SPECIFIED	
DECIMALS = ±.005, FRACTIONS = ±1/64, ANGLES = ±1/2°	
THESE DRAWINGS AND SPECIFICATIONS ARE THE PROPERTY OF DELTA ELECTRONICS MFG. CORP. AND SHALL NOT BE REPRODUCED, OR COPIED, OR USED AS THE BASIS FOR THE MANUFACTURE OR SALE OF APPARATUS OR DEVICES WITHOUT THEIR EXPRESS WRITTEN CONSENT.	

A	REVISED	1-7-04
-	OUTLINE	06-29-05
ALT.	REVISIONS	DATE
FILE NAME:		1158000N331-015T
PLT #		4/1

DELTA ELECTRONICS MFG. CORP. Beverly, MA 01915					
TITLE: 'N' (F) PANEL MOUNTED RECEPTACLE					
MATERIAL: SEE NOTE 2					
FINISH: SEE NOTE 2					
Program By	Scale	Drawn by	Mfg. Appr.	Engn. Appr.	
inc1	4/1				
06-20-05					
CODE IDENT: 00795		1158-000-N331-15			