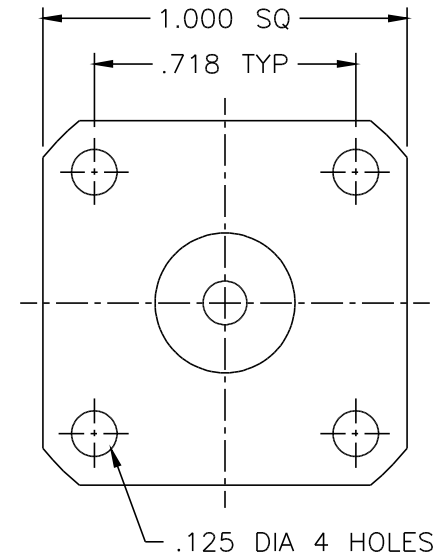
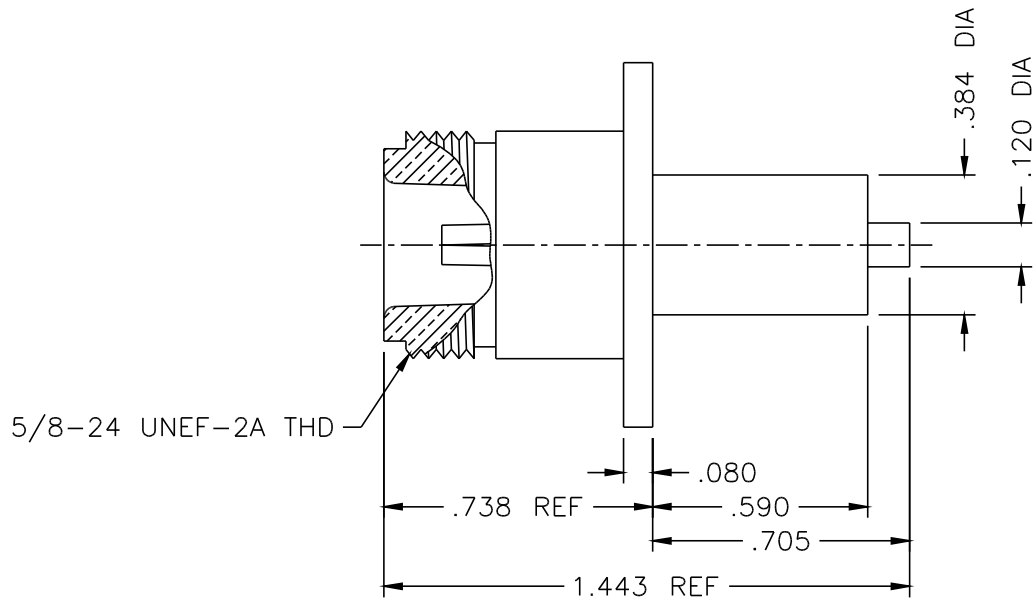




1143-000-N330-18



NOTES:

1. ASSEMBLED CONNECTOR INTERFACE IS DESIGNED IN ACCORDANCE WITH MIL-STD-348.
2. MATERIAL: BODY- BRASS PER ASTM B16
CONTACT- BERYLLIUM COPPER PER ASTM B196.
INSULATOR- TEFLON PER ASTM D1710
3. FINISHES: BODY- NICKEL PLATE PER QQ-N-290
CONTACT- GOLD PLATE PER MIL-G-45204
4. CONTACT SHIPPED LOOSE

-	OUTLINE	9/19/96
ALT.	REVISIONS	DATE

DELTA ELECTRONICS MFG. CORP. Beverly, MA 01915

TITLE: 'N' (F) PANEL MOUNT RECEPTACLE
NON-CAPTIVE POST CONTACT

Drawn by MR 9/19/96	Scale 2/1	Ckd. by	FILE NAME: 1143000N330-018T
---------------------------	--------------	---------	--------------------------------

TOLERANCES
UNLESS OTHERWISE
SPECIFIED:
3 PLACES = ±.005
2 PLACES = ±.01
ANGLES = ±1/2°

CODE IDENT.-00795 1143-000-N330-18