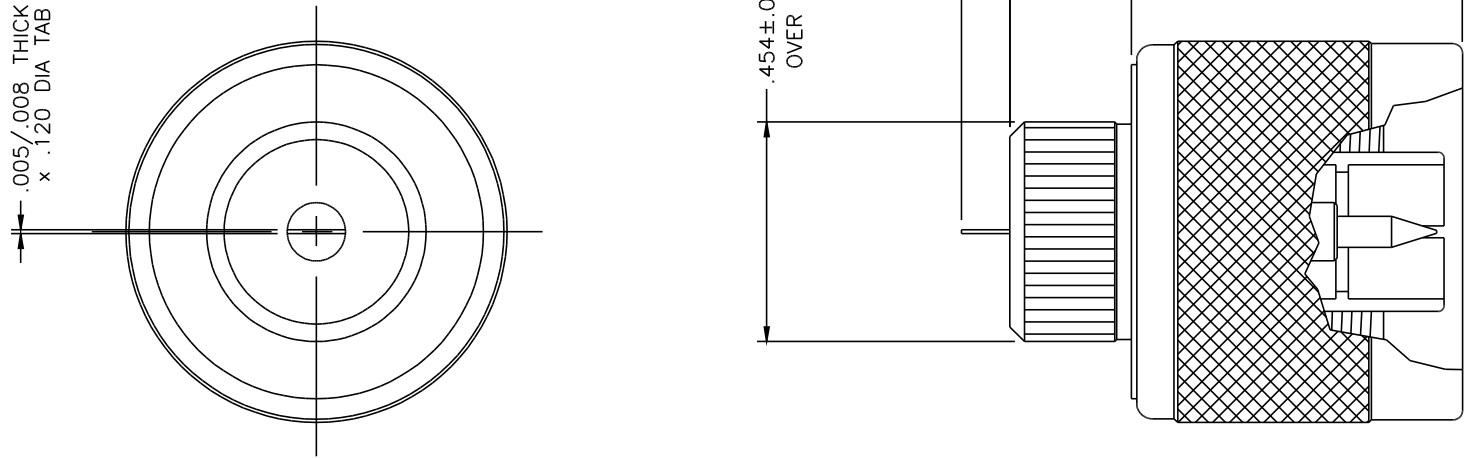


1124-000-N911-2
-----------------



NOTES:

1. INTERFACE IS IN ACCORDANCE WITH MIL-STD-348.
2. MATERIALS AND FINISHES:  
HOUSING, NUT: BRASS, NICKEL-PLATED  
CONTACT: BRASS, GOLD-PLATED  
INSULATOR: TEFLON PTFE
3. RECOMMENDED MOUNTING HOLE:  $.450 \pm .001$  DIA.

LB./M ____ FT./M ____ Stock Size ____						FINISH		SEE NOTE 2	
TOLERANCES: UNLESS OTHERWISE SPECIFIED; DECIMALS = .0005; FRACTIONS = 1/64; ANGLES = 1/2°									
- REMOVE ALL BURRS AND SHARP EDGES		OUTLINE		2/9/95					
THESE DRAWINGS AND SPECIFICATIONS ARE THE PROPERTY OF DELTA ELECTRONICS MFG. CORP. AND SHALL NOT BE REPRODUCED, OR COPIED, OR USED AS THE BASIS FOR THE CONSTRUCTION OF ANY APPARATUS OR DEVICES WITHOUT THEIR EXPRESS WRITTEN CONSENT.		Alt. Revisions		Date		ENGR APPD		MFG APPD	
FILE NAME: 1124000N911-002T		PLOT @ 4/1				Drawn by MCD 9/21/94		Scale 4X	
						Ckd. by		Mfg. Appd.	
								Engr. Appd.	
						CODE IDENT.-00795		1124-000-N911-2	