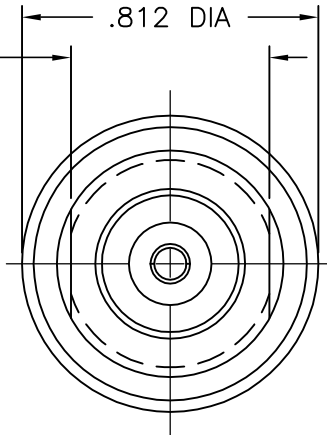


1120-000-N728



.531^{+0.000}_{-.003} REF
ACROSS 2 FLATS



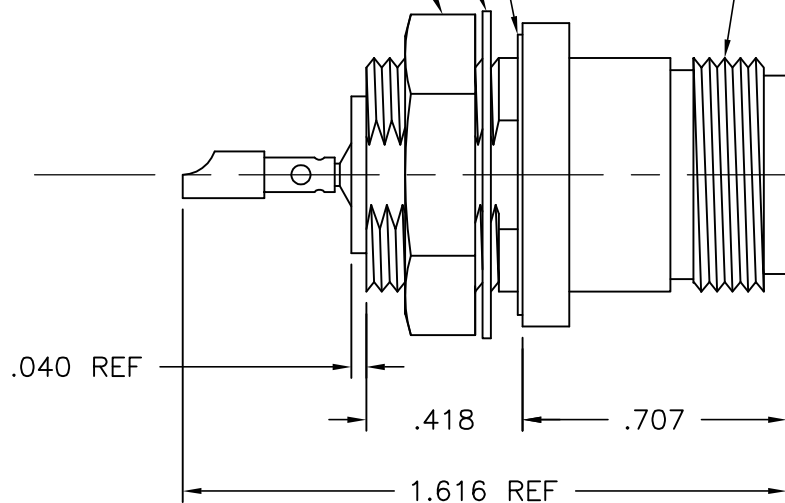
VIEW SHOWN WITH HEX NUT
AND LOCKWASHER REMOVED

.875 OD X .022 TH'K
INT. TOOTH LOCKWASHER

.750 HEX X
.187 WIDE

GASKET

5/8-24 UNEF-2A TH'D
BOTH ENDS



NOTES:

1. ASSEMBLED CONNECTOR INTERFACE IS DESIGNED IN ACCORDANCE WITH MIL-STD-348.
2. MATERIAL: LOCKWASHER - SPRING STEEL
CONTACT (INSIDE) - BERYLLIUM COPPER PER ASTM B196.
INSULATOR - TEFLON PER ASTM D1710
GASKET - SILICONE RUBBER PER ZZ-R-765
ALL OTHER PARTS - BRASS PER ASTM B16
3. FINISHES: CONTACTS - SILVER PLATE PER QQ-S-365
HERMETIC SEAL - 60/40 TIN REFLOW
ALL OTHER METAL PARTS - NICKEL PLATE PER QQ-N-290

UG-680/U

DELTA ELECTRONICS MFG. CORP. Beverly, MA 01915

TITLE:
"N" BULKHEAD PRESSURIZED JACK RECEPTACLE
- SOLDER POT CONTACT

UNLESS OTHERWISE SPECIFIED: TOLERANCES: 3 PLACES = ±.005, 2 PLACES = ±.02, ANGLES = ±1/2', SURFACE FINISH = 63	-	OUTLINE	5/2/03
	ALT.	REVISIONS	DATE

Drawn by BJM	Scale 2/1	Ckd. by	Engr Appd	FILE NAME: 1120000N728-000T
-----------------	--------------	---------	-----------	--------------------------------

THESE DRAWINGS AND SPECIFICATIONS ARE THE PROPERTY OF DELTA ELECTRONICS MFG CORP. AND SHALL NOT BE REPRODUCED, OR COPIED OR USED AS THE BASIS FOR THE MANUFACTURE OR SALE OF APPARATUS OR DEVICES WITHOUT THEIR EXPRESS WRITTEN CONSENT.

CODE IDENT.-00795

1120-000-N728