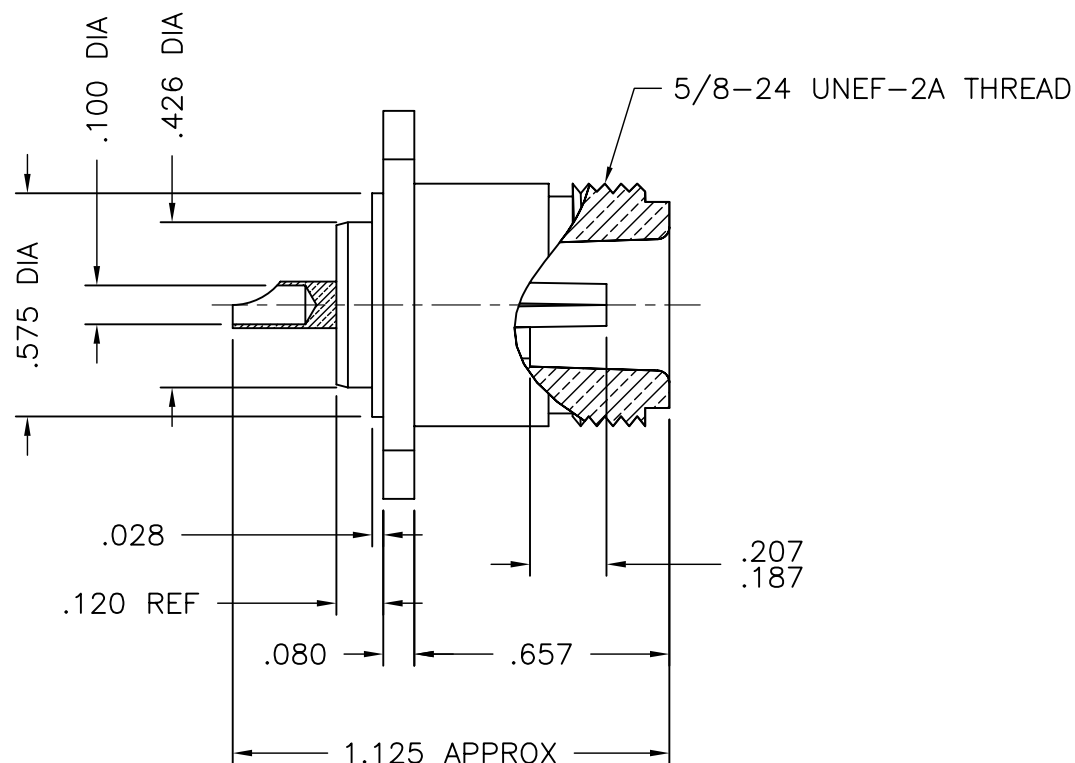
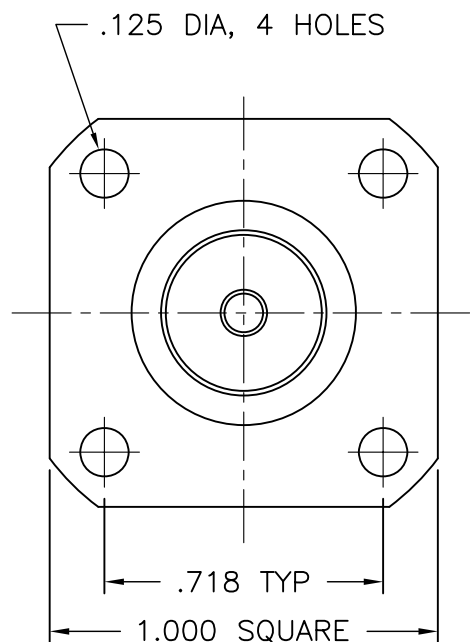




1113-000-N331-11



# NOTES:

1. ASSEMBLED CONNECTOR INTERFACE IS DESIGNED IN ACCORDANCE WITH MIL-STD-348.
2. MATERIAL: BODY - BRASS PER ASTM B16  
CONTACT - BERYLLIUM COPPER PER ASTM B196.  
INSULATOR - TEFLON PER ASTM D1710
3. FINISHES: BODY - NICKEL PLATE PER QQ-N-290  
CONTACT - GOLD PLATE PER MIL-G-45204

UNLESS OTHERWISE SPECIFIED: TOLERANCES: 3 PLACES =  $\pm 0.005$ , 2 PLACES =  $\pm 0.02$ , ANGLES =  $\pm 1/2^\circ$ , SURFACE FINISH = 63

-	OUTLINE	9/19/03
ALT.	REVISIONS	DATE

THESE DRAWINGS AND SPECIFICATIONS ARE THE PROPERTY OF DELTA ELECTRONICS MFG CORP. AND SHALL NOT BE REPRODUCED, OR COPIED OR USED AS THE BASIS FOR THE MANUFACTURE OR SALE OF APPARATUS OR DEVICES WITHOUT THEIR EXPRESS WRITTEN CONSENT.

DELTA ELECTRONICS MFG. CORP. Beverly, MA 01915

TITLE: 'N' PANEL MOUNTED JACK RECEPTACLE

Drawn by MR 9/19/03	Scale 2/1	Ckd. by BJM	Engr Appd BJM	FILE NAME: 1113000N331-011T
---------------------------	--------------	----------------	------------------	--------------------------------

CODE IDENT.-00795

1113-000-N331-11