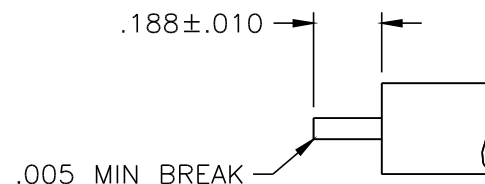
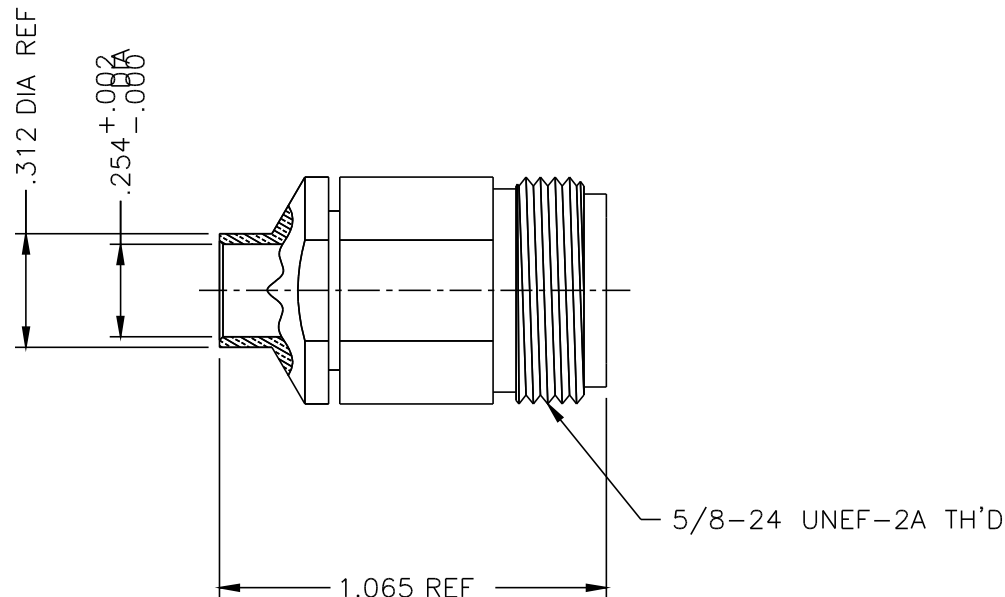
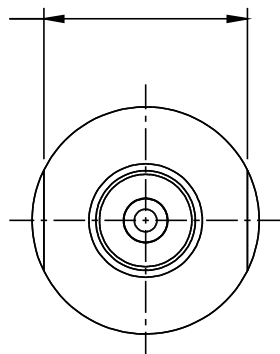




1108-050-A003-3

.562/.557 ACROSS 2 FLATS
BOTH BODIES



NOTES:

1. ASSEMBLED CONNECTOR INTERFACE IS DESIGNED IN ACCORDANCE WITH MIL-STD-348.
2. MATERIAL: BODIES - BRASS PER ASTM B16
CONTACT - BERYLLIUM COPPER PER ASTM B196.
INSULATOR - TEFLON PER ASTM D1710
3. FINISHES: BODIES - SILVER PLATE PER QQ-S-365
CONTACTS - GOLD PLATE PER MIL-G-45204
4. ALL PARTS ARE SHIPPED UNASSEMBLED.

RECOMMENDED CABLE
TRIMMING DIMENSIONS

E-Z FORM

UNLESS OTHERWISE SPECIFIED: TOLERANCES: 3 PLACES = ± 0.005 , 2 PLACES = ± 0.02 , ANGLES = $\pm 1/2^\circ$	AL T.	REVISIONS	DATE
-	OUTLINE	2/26/96	

DELTA ELECTRONICS MFG. CORP. Beverly, MA 01915				
TITLE: "N" CABLE JACK, SOLDER-CLAMP ATTACH FOR .250 SEMI-RIGID CABLE				
Drawn by MCD 2/26/96	Scale 2/1	Ckd. by	Engr Appd	FILE NAME: 1108050A003-003T
CODE IDENT: -00795		1108-050-A003-3		

THESE DRAWINGS AND SPECIFICATIONS ARE THE PROPERTY OF DELTA ELECTRONICS MFG CORP. AND SHALL NOT BE REPRODUCED, OR COPIED OR USED AS THE BASIS FOR THE MANUFACTURE OR SALE OF APPARATUS OR DEVICES WITHOUT THEIR EXPRESS WRITTEN CONSENT.