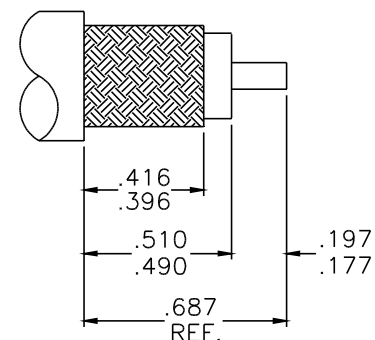
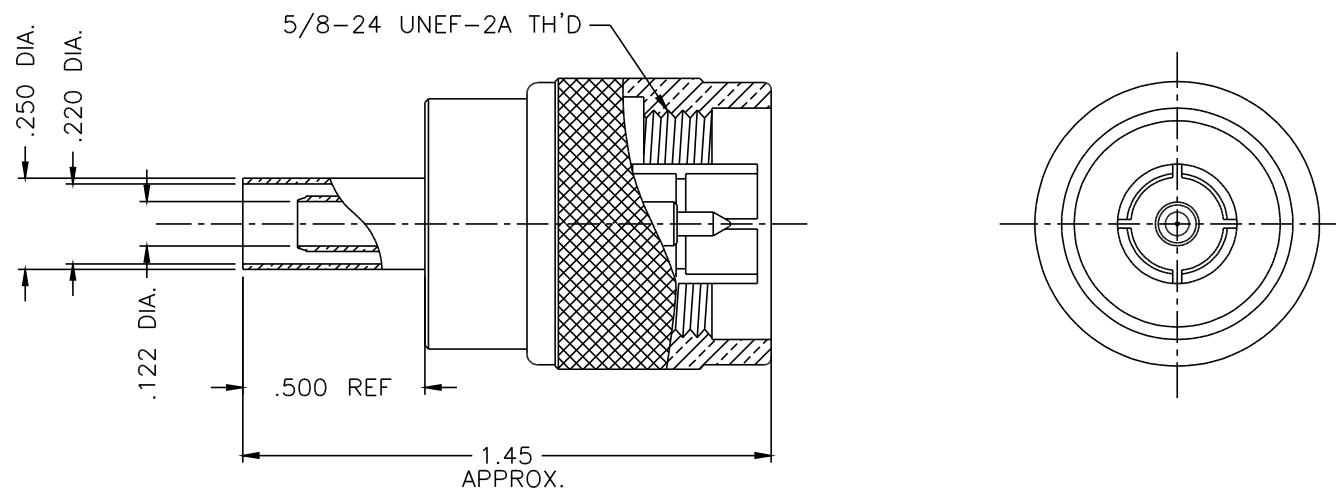




1103-018-N001



### CABLE CUTTING DIMENSIONS

#### NOTES:

1. ASSEMBLED CONNECTOR INTERFACE IS DESIGNED IN ACCORDANCE WITH MIL-STD-348.
2. MATERIAL: ALL METAL PARTS ARE - BRASS PER ASTM B16, EXCEPT  
SNAP RING - PHOSPHOR BRONZE PER QQ-P-330  
CRIMP SLEEVE - D.H.P. COPPER CDA ALLOY 122  
GASKET - SILICONE RUBBER PER ZZ-R-765  
INSULATOR - TEFLON PER ASTM D1710
3. FINISHES: ALL METAL PARTS ARE - NICKEL PLATE PER QQ-N-290, EXCEPT  
CONTACT - GOLD PLATE PER MIL-G-45204
4. RECOMMENDED CRIMP TOOL: M22520/5-01 WITH CRIMP DIE M22520/5-19 CLOSURE B (.213 HEX).

UNLESS OTHERWISE SPECIFIED: TOLERANCES: 3 PLACES =  $\pm .005$ , 2 PLACES =  $\pm .02$ , ANGLES =  $\pm 1/2^\circ$

-	OUTLINE	2-20-96
ALT.	REVISIONS	DATE

DELTA ELECTRONICS MFG. CORP. Beverly, MA 01915					
TITLE: 'N' CRIMP TYPE PLUG FOR RG-142, 223, 400/U CABLE					
5	Drawn by nct	Scale 2/1	Ckd. by	Engr Appd	FILE NAME: 1103018N001-000T
	2-20-96				
CODE IDENT.-00795			1103-018-N001		

THESE DRAWINGS AND SPECIFICATIONS ARE THE PROPERTY OF DELTA ELECTRONICS MFG CORP. AND SHALL NOT BE REPRODUCED, OR COPIED OR USED AS THE BASIS FOR THE MANUFACTURE OR SALE OF APPARATUS OR DEVICES WITHOUT THEIR EXPRESS WRITTEN CONSENT.