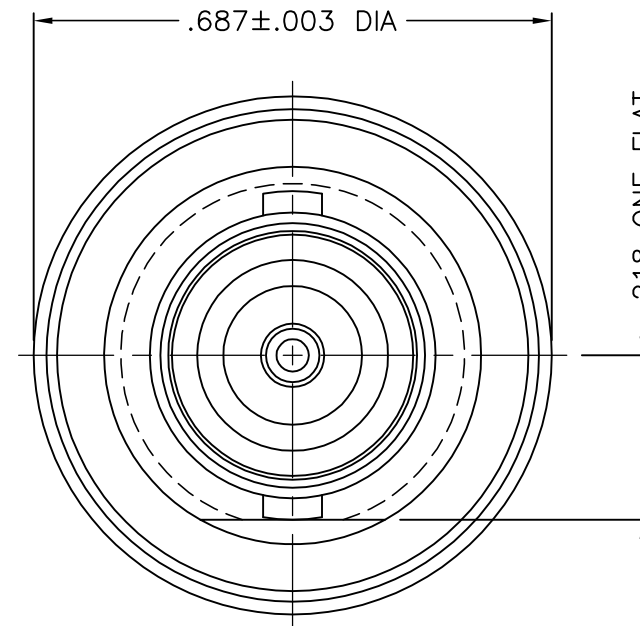
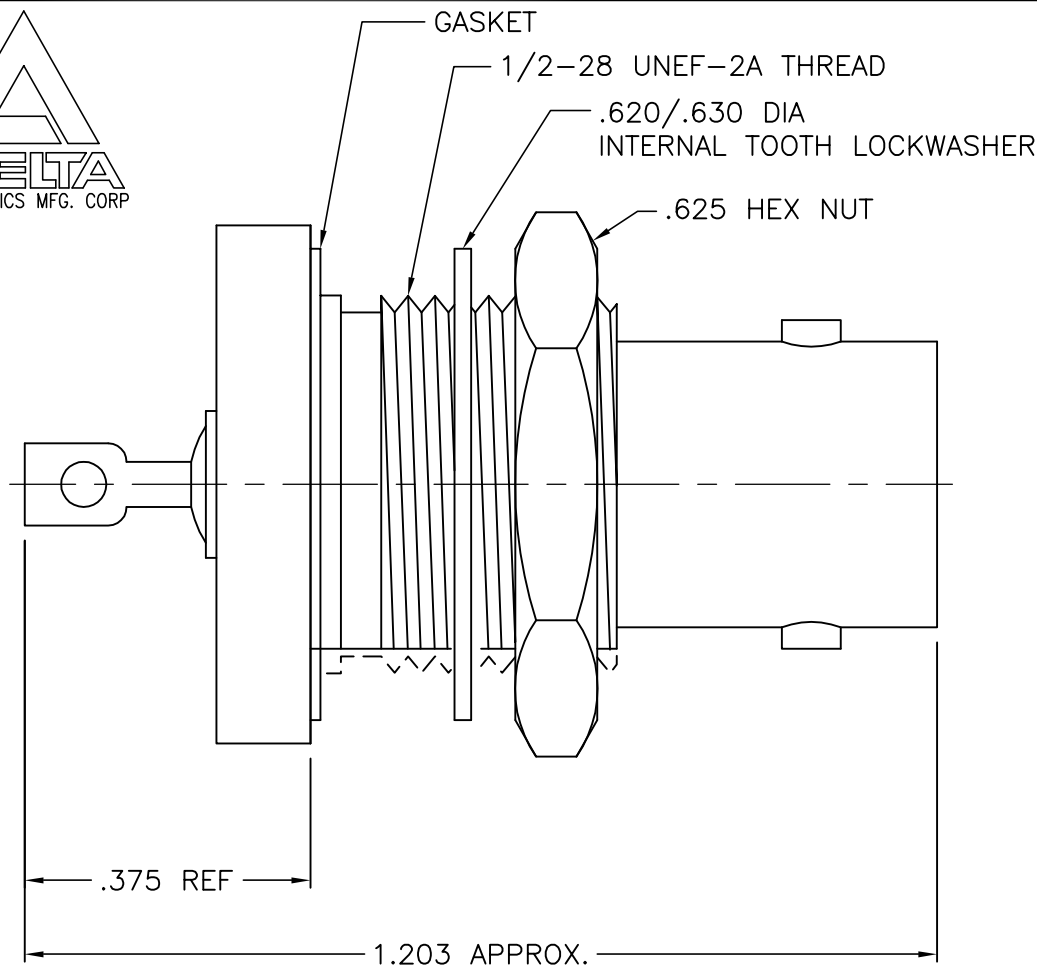




1046-000-A59F



VIEW SHOWN WITH HEX. NUT
& LOCKWASHER REMOVED

NOTES:

1. ASSEMBLED CONNECTOR INTERFACE IS DESIGNED IN ACCORDANCE WITH MIL-STD-348.
2. MATERIAL: BODY & HEX NUT- BRASS PER ASTM B16
LOCKWASHER - SPRING STEEL
CONTACT - BERYLLIUM COPPER PER ASTM B196.
BUSHING - BRASS PER ASTM B16.
GASKET - SILICONE RUBBER PER ZZ-R-765
INSULATOR - TEFLON PER ASTM D1710
3. FINISHES: CONTACT - GOLD PLATE PER MIL-G-45204
ALL OTHER METAL PARTS - SILVER PLATE PER QQ-S-365
4. SAME AS UG-911A/U EXCEPT Q.P.L ITEM WITH GOLD CONTACT AND SMALLER HEX NUT AND INTERNAL TOOTH LOCKWASHER.

UNLESS OTHERWISE SPECIFIED: TOLERANCES: 3 PLACES = ±.005, 2 PLACES = ±.02, ANGLES = ±1/2°, SURFACE FINISH = 63

THESE DRAWINGS AND SPECIFICATIONS ARE THE PROPERTY OF DELTA ELECTRONICS MFG CORP. AND SHALL NOT BE REPRODUCED, OR COPIED OR USED AS THE BASIS FOR THE MANUFACTURE OR SALE OF APPARATUS OR DEVICES WITHOUT THEIR EXPRESS WRITTEN CONSENT.

M39012/24-0001

DELTA ELECTRONICS MFG. CORP. Beverly, MA 01915

TITLE: 'BNC' STRAIGHT BULKHEAD JACK
RECEPTACLE-REAR MOUNT, HERMETIC SEALED

Drawn by BJM	Scale 4/1	Ckd. by MR	Engr Appd MR	FILE NAME: 1046000A59F-000T
-----------------	--------------	---------------	-----------------	--------------------------------

CODE IDENT.-00795

1046-000-A59F

A	REDRAWN	12/18/03
-	OUTLINE	10/24/91
ALT.	REVISIONS	DATE