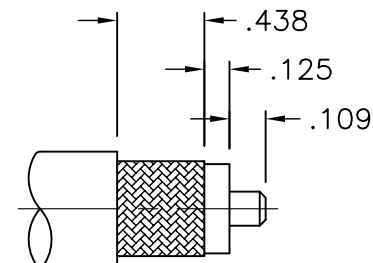
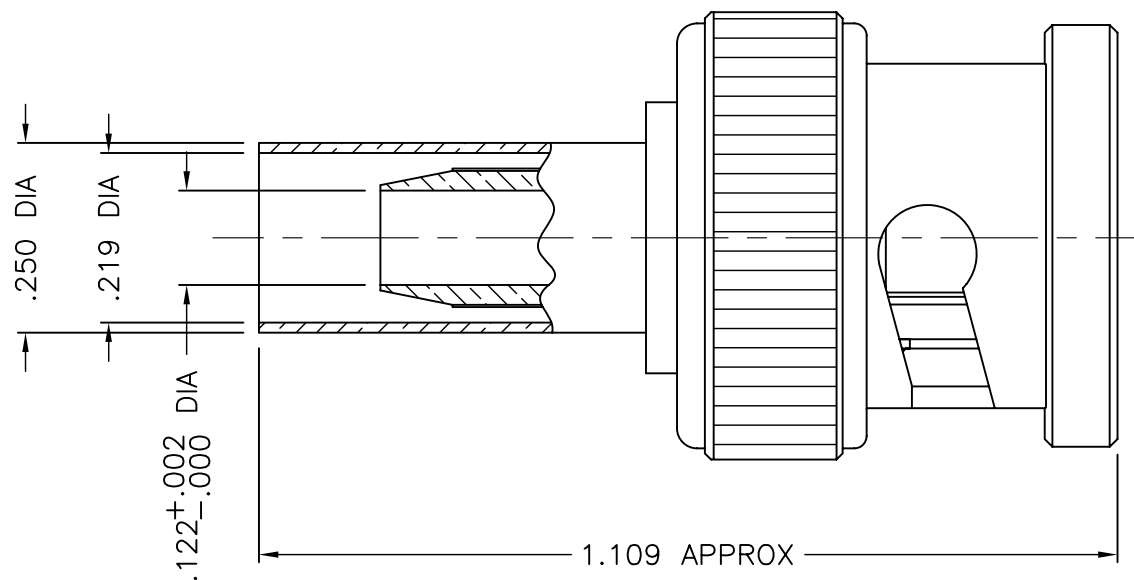




1003-017-N000



CABLE CUTTING DIMENSIONS

NOTES:

1. ASSEMBLED CONNECTOR INTERFACE IS DESIGNED IN ACCORDANCE WITH MIL-STD-348.
2. MATERIAL: CONTACT - BRASS PER ASTM B16.  
INSULATOR - TEFLON PER ASTM D1710  
GASKET - SILICONE RUBBER PER ZZ-R-765  
CRIMP SLEEVE - D.H.P. COPPER CDA ALLOY 122  
ALL OTHER METAL PARTS - BRASS PER ASTM B16
3. FINISHES: CONTACT - GOLD PLATE PER MIL-G-45204  
CRIMP SLEEVE - SULFAMATE NICKEL PLATE PER MIL-P-27418  
ALL OTHER PLATED PARTS - NICKEL PLATE PER QQ-N-290
4. USE CRIMPING TOOL WT-233 (.213 HEX) AS SUPPLIED BY THOMAS & BETTS Co.  
ELIZABETH, NJ OR EQUAL

UNLESS OTHERWISE SPECIFIED: TOLERANCES: 3 PLACES =  $\pm .005$ , 2 PLACES =  $\pm .02$ , ANGLES =  $\pm 1/2^\circ$

-	OUTLINE	10/7/08
ALT.	REVISIONS	DATE

THESE DRAWINGS AND SPECIFICATIONS ARE THE PROPERTY OF DELTA ELECTRONICS MFG CORP. AND SHALL NOT BE REPRODUCED, OR COPIED OR USED AS THE BASIS FOR THE MANUFACTURE OR SALE OF APPARATUS OR DEVICES WITHOUT THEIR EXPRESS WRITTEN CONSENT.

DELTA ELECTRONICS MFG. CORP. Beverly, MA 01915

TITLE: 'BNC' (M) CRIMP TYPE PLUG FOR RG-58C & 141 A/U CABLE  
NON CAPTIVE CONTACT

Drawn by BJM 10/7/08	Scale 4/1	Ckd. by MR	Engr Appd MR	FILE NAME: 1003017N000-000T
----------------------------	--------------	---------------	-----------------	--------------------------------

CODE IDENT.-00795

1003-017-N000