



DELTA
Electronics Mfg. Corp.

Threaded RF

SMP-T

SMPM-T

SMP3-T



978-927-1060 | sales@deltarf.com | deltarf.com



DELTA
Electronics Mfg. Corp.

Threaded RF connectors designed
for high vibration applications

SMP-T
SMPM-T
SMP3-T



Call Delta today! 978-927-1060

SMP-T – Part Descriptions	Part Number	Page #
SMP-T General Specifications		4
SMP-T Straight Cable Mount Plug, with Retractable Coupling Nut, .086" Cable	8608094G00N-000	6
SMP-T R/A Cable Mount Plug, with Coupling Nut, .086" Cable	8676094G00N-000	6
SMP-T PCB Mount Receptacle, Edge Launch and Ground Legs	8667000G91N-000	7
SMP-T PCB Mount Receptacle, Vertical Launch R/A Contact	8668000G91N-000	7

SMPM-T – Part Descriptions	Part Number	Page #
SMPM-T General Specifications		8
SMPM-T Straight Cable Mount Plug, Retractable Coupling Nut, .047" Cable	8808111G00N-000	10
SMPM-T Straight Cable Mount Plug, Retractable Coupling Nut, .086" Cable	8808094G00N-000	11
SMPM-T R/A Cable Mount Plug, Seal with Coupling Nut, .047" Cable	8876111G00N-000	10
SMPM-T R/A Cable Mount Plug, Coupling Nut, .086" Cable	8876094G003-004	11
SMPM-T PCB Mount Receptacle, Vertical Launch, Ground Legs	8868000G91N-000	12
SMPM-T PCB Mount Receptacle, Vertical Launch, R/A Center Contact	8868000G91P-086	12
SMPM-T PCB Mount Receptacle, Edge Launch, Surface Mount Ground Legs	8867000G91N-003	13
SMPM-T PCB Mount Receptacle, Edge Launch, Surface Mount Ground Legs	8867000G91N-002	13

SMP3-T – Part Descriptions	Part Number	Page #
SMP3-T General Specifications		14
SMP3-T Straight Cable Mount Plug, With Coupling Nut, .047" Cable	9308111G00N-000	16
SMP3-T R/A Cable Mount Plug, With Coupling Nut, .047" Cable	9376111G00N-000	16
SMP3-T PCB Mount Receptacle, Edge Launch and Ground Legs	9367000G91N-000	17
SMP3-T PCB Mount Receptacle, Vertical Launch and Ground Legs	9368000G00N-000	17

SMP-T, SMPM-T, SMP3-T – Cable Assembly & Tooling	Part Number	Page #
Cable Assembly Options	.040 / .047 / .087 Cable	19
Tooling	T33-88000-*	20

SMP-T / SMPM-T / SMP3-T Markets

Delta's threaded SMP-T, SMPM-T and SMP3-T series are ideal for launch vehicle applications including hypersonics, satellites, military and commercial aircraft, antenna systems, transportable electronic equipment and any application requiring small size and reliable RF performance. In demanding applications involving vibration and mechanical shock, Delta's SMP-T, SMPM-T & SMP3-T connectors provide stable RF performance up to 65 GHz. Each threaded series has straight cable mount configurations with retractable coupling nuts and Delta's unique space saving low profile R/A cable mount designs. PCB configurations include both vertical launch and low profile edge launch designs.



Aerospace



Aviation



Communications

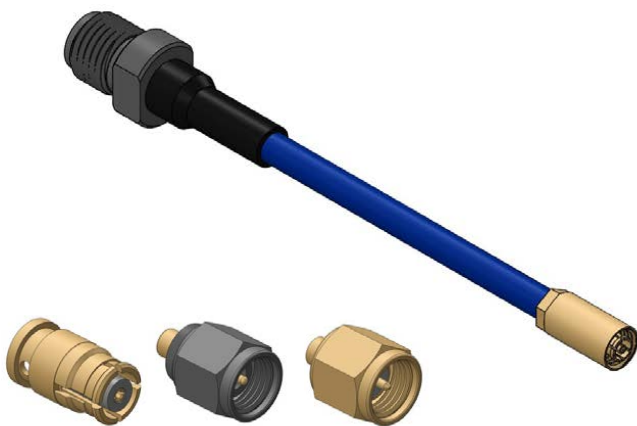


Hypersonic

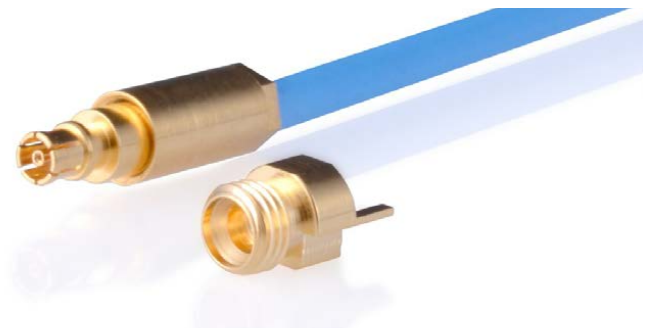
SMP-T / SMPM-T / SMP3-T Design Features

SMP-T, SMPM-T & SMP3-T critical interface dimensions meet the applicable industry standards including: DSCC 94007, 94008, Mil-STD-348, Mil-PRF-31031, IEC 61169-60, IEC 61169-44. Engineers can choose from Smooth Bore, Limited Detent or Full Detent interface options. Cable mount designs accommodate semi-rigid, conformable, and flexible variants of .047" and .086" (RG 405) cable. Delta can adapt the cable mount designs to accept low loss, phase stable cable variants with higher VoP (77% to 83%) dielectrics. PCB configurations can also be adapted to fit different PCB thicknesses and custom mechanical footprints. Vertical launch PCB designs are available with straight and R/A surface mount center contacts, through hole center contacts and either surface mount or through hole grounding features.

Delta's .047" and .086" cable assemblies perform up to 65 GHz and are tested for Insertion Loss and Return Loss performance.



Call the Delta hyper-responsive engineering design team to discuss a custom connector or cable application!



Delta Cable Assemblies

- Flexible and semi-rigid cable options
- Insertion Loss and Return Loss measurements up to 65 GHz
- IPC-A-620 and J-STD-001 inspection & soldering
- Phase match and delay measurements
- End 2 Connector options include: SMA, 2.92 mm, 1.85 mm, or any of Delta's RF connector interfaces suitable for .047" and .086" cable



SMP-T Electrical Specifications

Operating Frequency

Straight Cable Mount - DC to 40 GHz

R/ A Cable Mount - DC to 26.5 GHz

Straight PCB Mount - DC to 40 GHz

R/ A PCB Mount - DC to 26.5 GHz

Impedance

Straight and Right Angle - 50 Ω

Insertion Loss

.05 +.04√f in GHz (non hermetic connectors)

VSWR (Voltage Standing Wave Ratio)

1.35:1 Max. thru 26.5 GHz; 1.5 Max. thru 40 GHz

RF Leakage

-80 db to 3 GHz, -65 db to 40 GHz

Insulation Resistance

5,000 megohms

DWV (@ sea level)

500 Vrms

SMP-T Mechanical Specifications

Force to Engage

Smooth Bore • 1.5 lbs typ

Full Detent - 7.0 lbs typ

Force to Disengage

Smooth Bore 1.0 lbs typ

Full Detent • 9.0 lbs typ

Durability

Smooth Bore • 1000 cycles

Limited Detent • 500 cycles

Full Detent • 100 cycles

Contact Retention

1.5 lbs Min

Recommended Coupling Nut Torque

28 to 32 in. oz.

SMP-T Environmental Specifications

Temperature Range

-65 C to + 165 C

Mechanical Shock

Meets Mil-STD-202, Method 213,

Random Vibration

Meets MII-STD-202, Method 214,
Condition K-I, 46.3 g

Sine Vibratlon

MIL-STD-202, method 204, 28 g peak

Altitude

Meets Mil-STD-202, Method 105, Condition C

Thermal Shock

Meets Mil-STD-202, Method 107, Condition B

Moisture Resistance

MIL-STD-202, Method 106

SMP-T Materials & Plating Specifications

Materials

Bodies • Beryllium Copper per ASTM B196 or
Stainless Steel, type 303, Condition A

Outer Contacts • Beryllium Copper per ASTM B196

Center Contacts • Beryllium Copper per ASTM B196

Insulators • PTFE Fluorocarbon per ASTM D1710,
type 1, grade 1; Torlon per ASTM D-5204 or
Ultem per ASTM D-5205

Plating

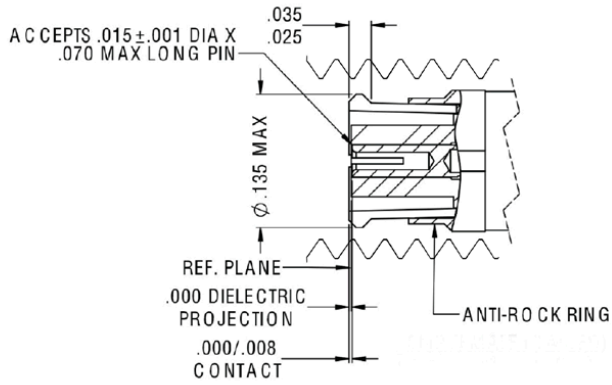
Bodies • Gold Plate per ASTM B488
over Nickel Plate per SAE AMS-QQ-N-290
or Passivated per SAE AMS 2700

Outer Contacts • Gold Plate per ASTM B488,
over Nickel Plate per SAE AMS-QQ-N-290

Center Contacts • Gold Plate per ASTM B488,
Type II, over Nickel Plate per
SAE AMS-QQ-N-290

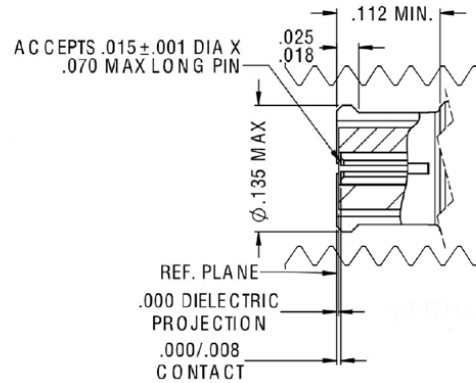
SMP-T Interface Dimensions

SMP-T Female (Cabled)



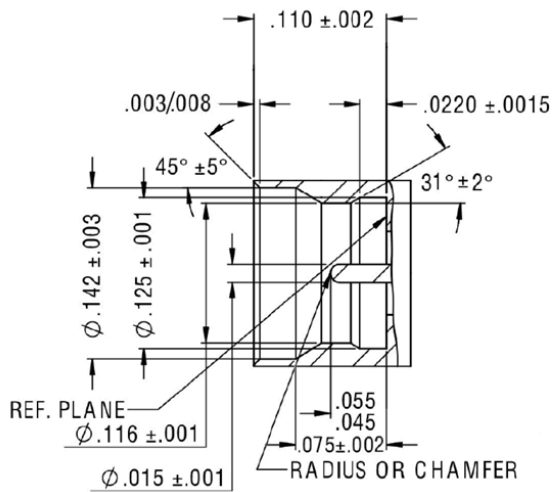
PER MIL-STD-348B - Figure 326.1a

SMP-T Female (Un-Cabled)



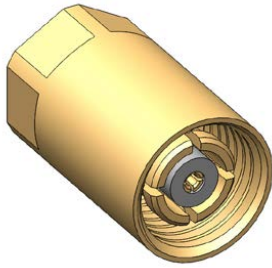
PER MIL-STD-348B - Figure 326.1

SMP-T Male Full Detent Interfaces



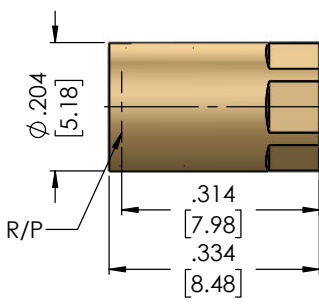
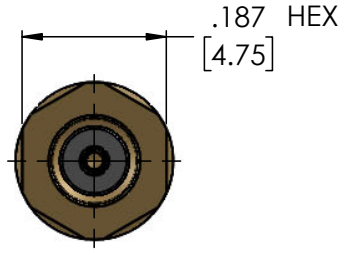
PER MIL-STD-348B - Figure 326.2

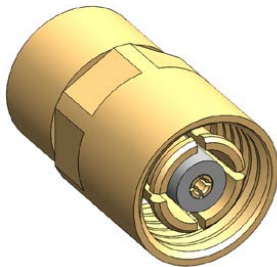




SMP-T 8608094G00N-000

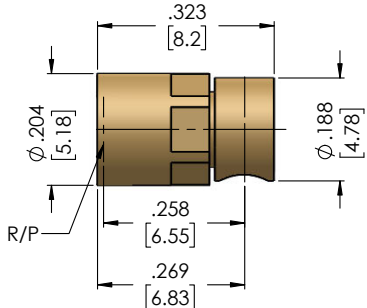
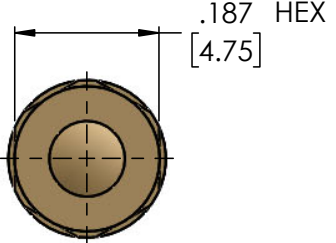
Straight Cable Mount Female, with
Retractable Coupling Nut, for .086" (RG 405)
Semi-Rigid Cable or Flexible Equivalents

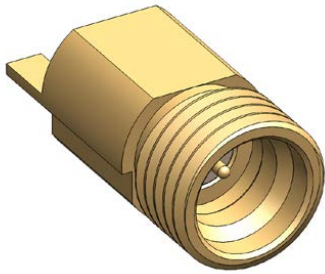
Part Number 8608094G00N-000		Configuration Straight	Cable .086" (RG 405) SR or Flex	CC Termination One Step Solderless	OC Termination Direct Solder	
Product Features						
Frequency	DC to 40 GHz					
CC Gender	Female					
CC & Body Plating	Gold					
Durability	500 Cycles					
Torque	28-32 in. oz.					
Interface Seal	No					
						



SMP-T 8676094G00N-000

Right Angle Cable Mount Female, with
Retractable Coupling Nut, for .086" (RG 405)
Semi-Rigid Cable or Flexible Equivalents

Part Number 8676094G00N-000		Configuration Right Angle	Cable .086" (RG 405) SR or Flex	CC Termination Solder	OC Termination Direct Solder	
Product Features						
Frequency	DC - 26.5 GHz					
CC Gender	Female					
CC & Body Plating	Gold					
Durability	500 Cycles					
Torque	28-32 in. oz.					
Interface Seal	No					
						



SMP-T 8667000G91N-000

PCB Mount Receptacle, Male,
Full Detent, Edge Launch, Surface
Mount Center Contact and Ground Legs

Part Number 8667000G91N-000		Configuration Straight	PCB Mount Edge Launch	CC Termination Surface Mount	OC Termination Surface Mount
Product Features					
Frequency	DC to 40 GHz				
CC Gender	Male				
CC & Body Plating	Gold				
Durability	100 Cycles				
Tin Dip	Available				
Tape & Reel	Available				
Interface	Full Detent				



SMP-T 8668000G91N-000

PCB Mount Receptacle Male, Full Detent,
Vertical Launch, Right Angle Surface Mount
Center Contact, Thru Hole Ground Legs

Part Number 8668000G91N-000		Configuration Straight	PCB Mount Vertical Launch	CC Termination Surface Mount	OC Termination Thru Hole
Product Features					
Frequency	DC to 40 GHz				
CC Gender	Male				
CC & Body Plating	Gold				
Durability	100 Cycles				
Tin Dip	Available				
Tape & Reel	Available				
Interface	Full Detent				

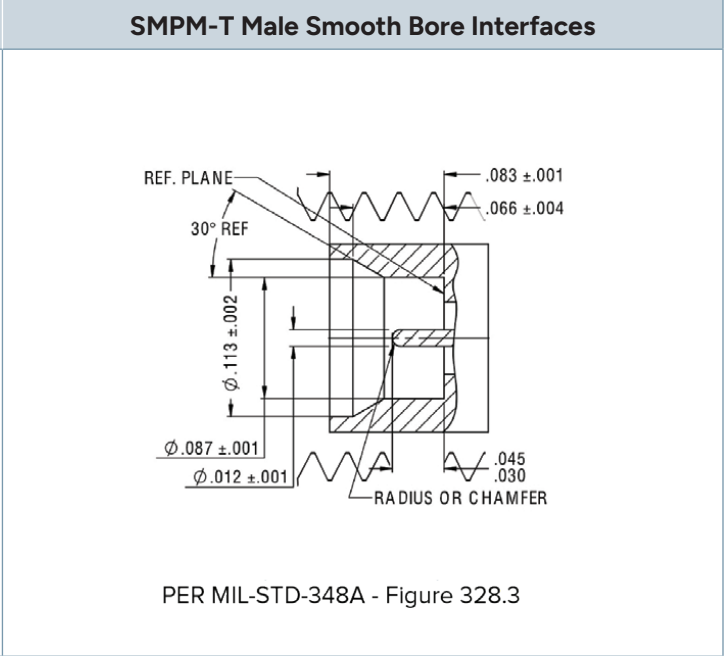
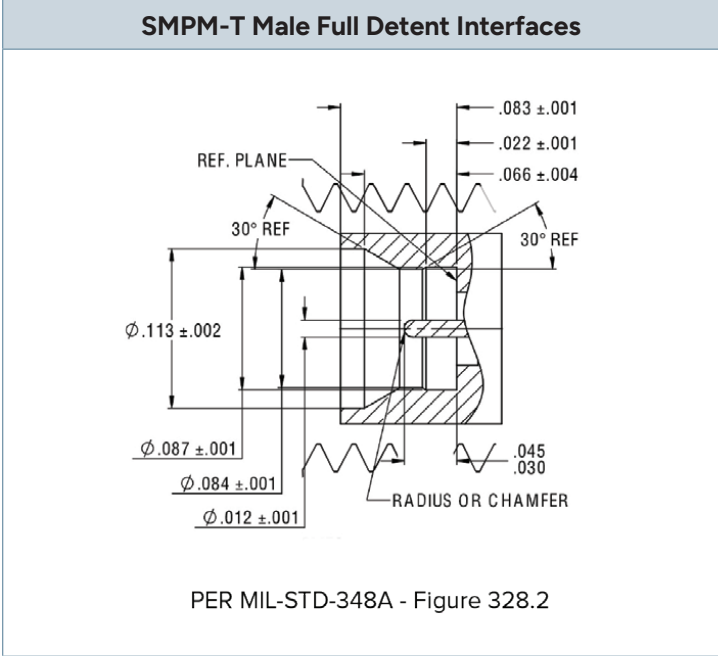
SMPM-T Electrical Specifications	
Operating Frequency	
	Straight Cable Mount - DC to 65 GHz
	R/ A Cable Mount - DC to 40 GHz
	Straight PCB Mount - DC to 65 GHz
	R/ A PCB Mount - DC to 40 GHz
Impedance	
	Straight and Right Angle - 50 Ω
Insertion Loss	
	.05 +.04√f in GHz (non hermetic connectors)
VSWR (Voltage Standing Wave Ratio)	
	1.35:1 Max. thru 26.5 GHz; 1.4 Max. thru 65 GHz
RF Leakage	
	-80 db to 3 GHz, -65 db to 65 GHz
Insulation Resistance	
	5,000 megohms
DWV (@ sea level)	
	500 Vrms

SMPM-T Mechanical Specifications	
Force to Engage	
	Smooth Bore • 2.0 lbs typ
	Limited Detent - 3.5 lbs typ
	Full Detent - 5.0 lbs typ
Force to Disengage	
	Smooth Bore 1.5 lbs typ
	Limited Detent - 4.0 lbs typ
	Full Detent • 6.0 lbs typ
Durability	
	Smooth Bore • 1000 cycles
	Full Detent • 100 cycles
Contact Retention	
	1.5 lbs Min
Recommended Coupling Nut Torque	
	28 to 32 in. oz.

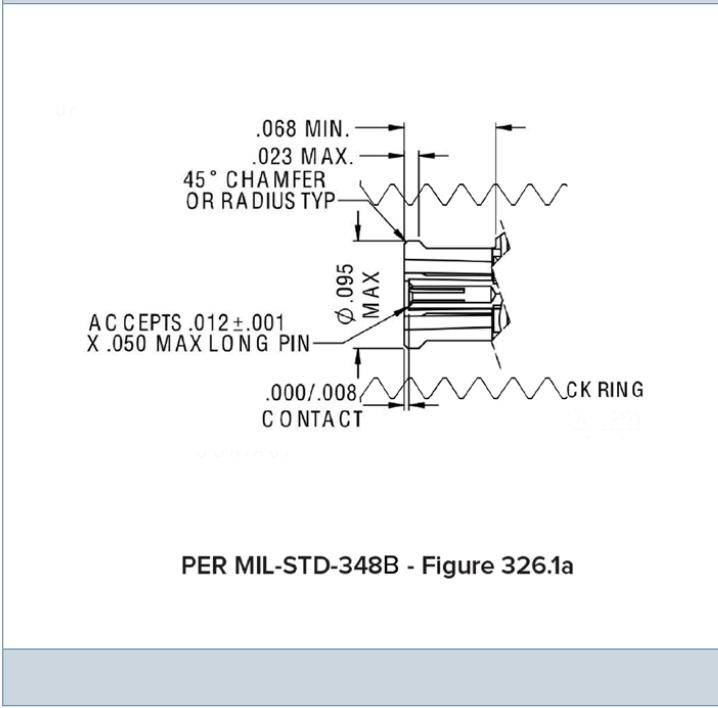
SMPM-T Environmental Specifications	
Temperature Range	
	-65 C to + 165 C
Mechanical Shock	
	Meets Mil-STD-202, Method 213,
Random Vibration	
	Meets Mil-STD-202, Method 214, Condition K-I, 46.3 g
Sine Vibration	
	Mil-STD-202, method 204, 28 g peak
Altitude	
	Meets Mil-STD-202, Method 105, Condition C
Thermal Shock	
	Meets Mil-STD-202, Method 107, Condition B
Moisture Resistance	
	Mil-STD-202, Method 106

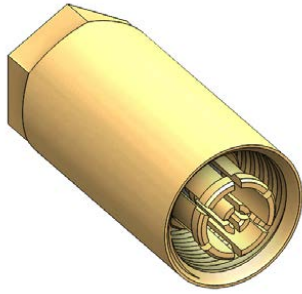
SMPM-T Materials & Plating Specifications	
Materials	
	Bodies • Beryllium Copper per ASTM B196 or Stainless Steel, type 303, Condition A
	Outer Contacts • Beryllium Copper per ASTM B196
	Center Contacts • Beryllium Copper per ASTM B196
	Insulators • PTFE Fluorocarbon per ASTM D1710, type 1, grade 1; Torlon per ASTM D-5204 or Ultem per ASTM D-5205
Plating	
	Bodies • Gold Plate per ASTM B488, over Nickel Plate per SAE AMS-QQ-N-290 or Passivated per SAE AMS 2700
	Outer Contacts • Gold Plate per ASTM B488, over Nickel Plate per SAE AMS-QQ-N-290
	Center Contacts • Gold Plate per ASTM B488, Type II ,over Nickel Plate per SAE AMS-QQ-N-290

SMPM-T Interface Dimensions



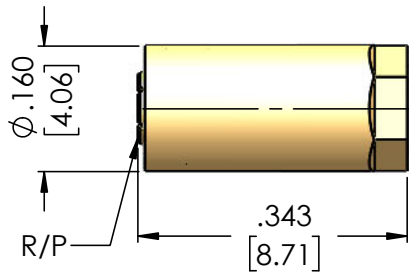
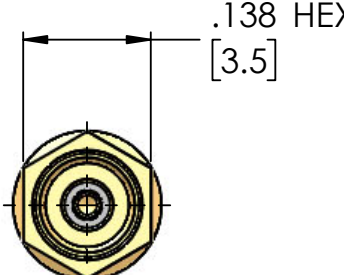
SMPM-T Female

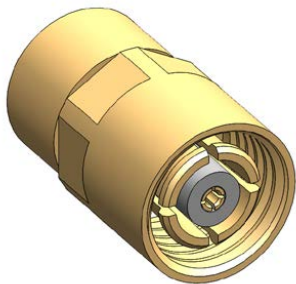




SMPM-T 8808111G00N-000

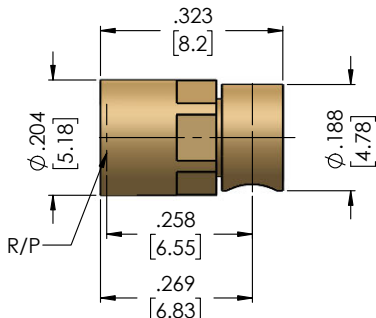
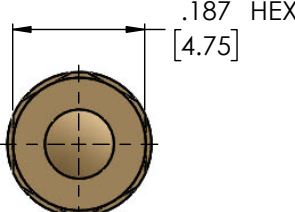
Straight Cable Mount Female,
with Retractable Coupling Nut, for .047"
Semi-Rigid Cable or Flexible Equivalents

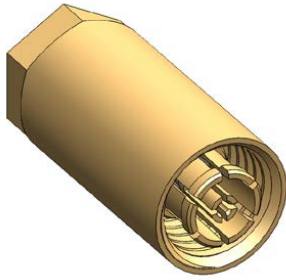
Part Number 8808111G00N-000		Configuration Straight	Cable .047" SR or Flex	CC Termination One Step Solderless	OC Termination Direct Solder
Product Features					
Frequency	DC to 65 GHz				
CC Gender	Female				
CC & Body Plating	Gold				
Durability	500 Cycles				
Torque	28-32 in. oz.				
Interface Seal	No				



SMPM-T 8876111G00N-000

Right Angle Cable Mount Female,
Integral Coupling Nut, for .047"
Semi-Rigid Cable or Flexible Equivalents

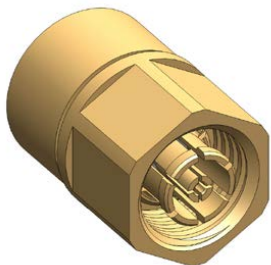
Part Number 8876111G00N-000		Configuration Right Angle	Cable .047" SR or Flex	CC Termination Solder	OC Termination Direct Solder
Product Features					
Frequency	DC to 40 GHz				
CC Gender	Female				
CC & Body Plating	Gold				
Durability	500 Cycles				
Torque	28-32 in. oz.				
Interface Seal	Yes				



SMPM-T 8808094G00N-000

Straight Cable Mount Female, with Retractable Coupling Nut, for .086" Semi-Rigid Cable or Flexible Equivalents

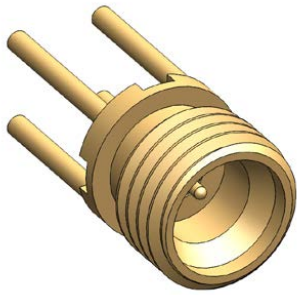
Part Number 8808094G00N-000		Configuration Straight	Cable .086" (RG 405) SR or Flex	CC Termination One Step Solderless	OC Termination Direct Solder
Product Features					
Frequency	DC to 65 GHz				
CC Gender	Female				
CC & Body Plating	Gold				
Durability	500 Cycles				
Torque	28-32 in. oz.				
Interface Seal	No				



SMPM-T 8876094G003-004

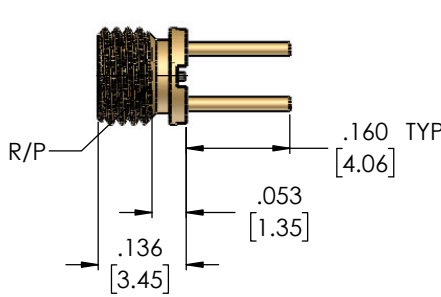
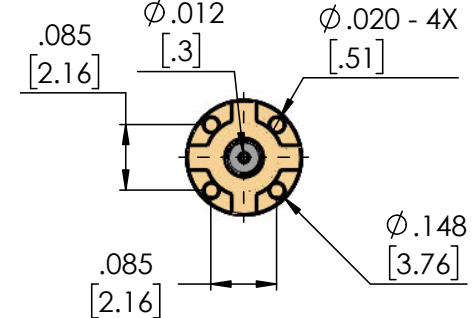
Right Angle Cable Mount Female, with Integral Coupling Nut, .178" Hex for .086" (RG-405) Semi-Rigid Cable or Flexible Equivalents

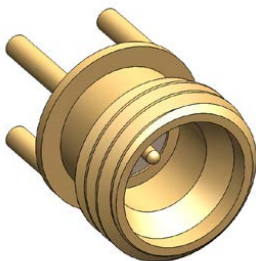
Part Number 8876094G003-004		Configuration Right Angle	Cable .086" (RG 405) SR or Flex	CC Termination Solder	OC Termination Direct Solder
Product Features					
Frequency	DC to 40 GHz				
CC Gender	Female				
CC & Body Plating	Gold				
Durability	500 Cycles				
Torque	28-32 in. oz.				
Interface Seal	No				



SMPM-T 8868000G91N-000

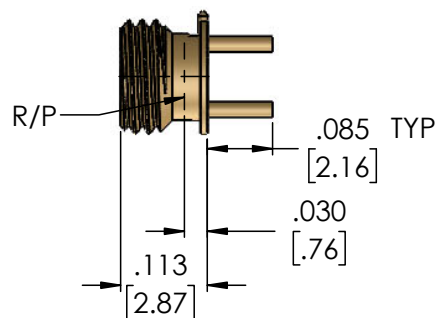
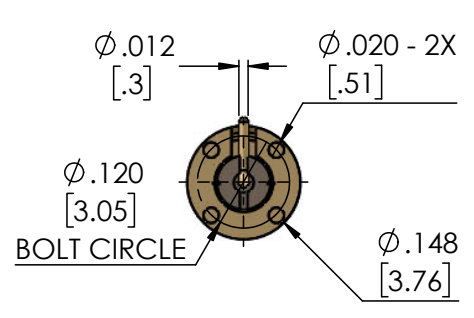
PCB Mount Receptacle, Male, Vertical Launch, Smooth Bore, Surface Mount Center Contact, with Thru Hole Ground Legs

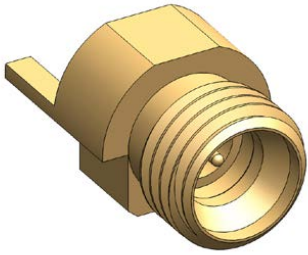
Part Number 8868000G91N-000		Configuration Straight	PCB Mount Vertical Launch	CC Termination Surface Mount	OC Termination Thru Hole
Product Features					
Frequency	DC to 65 GHz				
CC Gender	Male				
CC & Body Plating	Gold				
Durability	1000 Cycles				
Tin Dip	Available				
Tape & Reel	Available				
Interface	Smooth Bore				



SMPM-T 8868000G91N-086

PCB Mount Receptacle, Male, Vertical Launch, Full Detent, Right Angle Surface Mount Center Contact, with Thru Hole Ground Legs

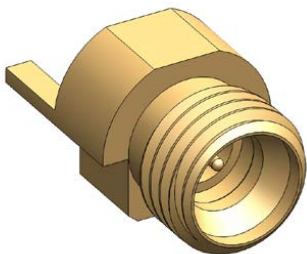
Part Number 8868000G91N-086		Configuration Straight	PCB Mount Vertical Launch	CC Termination Surface Mount	OC Termination Thru Hole
Product Features					
Frequency	DC to 40 GHz				
CC Gender	Male				
CC & Body Plating	Gold				
Durability	100 Cycles				
Tin Dip	Available				
Tape & Reel	Available				
Interface	Full Detent				



SMPM-T 8867000G91N-002

PCB Mount Receptacle, Male, Smooth Bore, Edge Launch, Surface Mount Center Contact and Surface Mount Ground Legs

Part Number 8867000G91N-002		Configuration Straight	PCB Mount Edge Launch	CC Termination Surface Mount	OC Termination Surface Mount
Product Features					
Frequency	DC to 65 GHz				
CC Gender	Male				
CC & Body Plating	Gold				
Durability	1000 Cycles				
Tin Dip	Available				
Tape & Reel	Available				
Interface	Smooth Bore				



SMPM-T 8867000G91N-003

PCB Mount Receptacle, Male, Full Detent, Edge Launch, Surface Mount Center Contact and Surface Mount Ground Legs

Part Number 8868000G91N-003		Configuration Straight	PCB Mount Edge Launch	CC Termination Surface Mount	OC Termination Surface Mount
Product Features					
Frequency	DC to 65 GHz				
CC Gender	Male				
CC & Body Plating	Gold				
Durability	100 Cycles				
Tin Dip	Available				
Tape & Reel	Available				
Interface	Full Detent				

SMP3-T Electrical Specifications	
Operating Frequency	
Straight Cable Mount - DC to 65 GHz	
R/ A Cable Mount - DC to 40 GHz	
Straight PCB Mount - DC to 65 GHz	
R/ A PCB Mount - DC to 40 GHz	
Impedance	
Straight and Right Angle - 50 Ω	
Insertion Loss	
.05 +.04√f in GHz (non hermetic connectors)	
VSWR (Voltage Standing Wave Ratio)	
1.35:1 Max. thru 26.5 GHz; 1.4 Max. thru 65 GHz	
RF Leakage	
-80 db to 3 GHz, -65 db to 65 GHz	
Insulation Resistance	
3,500 megohms	
DWV (@ sea level)	
250 Vrms	

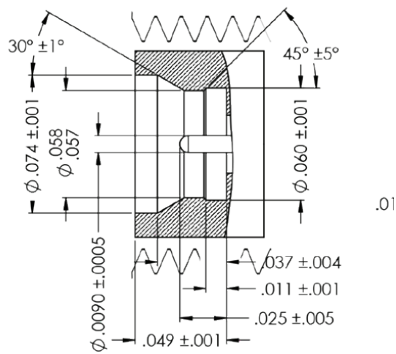
SMP3-T Mechanical Specifications	
Force to Engage	
Smooth Bore • 1.0 lbs typ	
Full Detent - 2.5 lbs typ	
Force to Disengage	
Smooth Bore 1.0 lbs typ	
Full Detent • 4.0 lbs typ	
Durability	
Smooth Bore • 500 cycles	
Full Detent - 100 cycles	
Contact Retention	
1.5 lbs Min	
Recommended Coupling Nut Torque	
24 to 28 in. oz.	

SMP3-T Environmental Specifications	
Temperature Range	
-65 C to + 165 C	
Mechanical Shock	
Meets Mil-STD-202, Method 213, Condition 1, 12000 g peak	
Random Vibration	
Meets Mil-STD-202, Method 214, Condition K-I, 46.3 g	
Sine Vibration	
MiL-STD-202, method 204, 28 g peak	
Altitude	
Meets Mil-STD-202, Method 105, Condition C	
Thermal Shock	
Meets Mil-STD-202, Method 107, Condition B	
Moisture Resistance	
MiL-STD-202, Method 106	

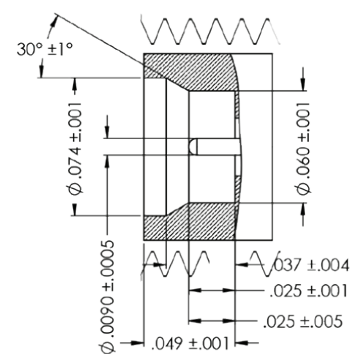
SMP3-T Materials & Plating Specifications	
Materials	
Bodies • Beryllium Copper per ASTM B196 or Stainless Steel, type 303, Condition A	
Outer Contacts • Beryllium Copper per ASTM B196	
Center Contacts • Beryllium Copper per ASTM B196	
Insulators • PTFE Fluorocarbon per ASTM D1710, type 1, grade 1; Torlon per ASTM D-5204 or Ultem per ASTM D-5205	
Plating	
Bodies • Gold Plate per ASTM B488, over Nickel Plate per SAE AMS-QQ-N-290 or Passivated per SAE AMS 2700	
Outer Contacts • Gold Plate per ASTM B488, over Nickel Plate per SAE AMS-QQ-N-290	
Center Contacts • Gold Plate per ASTM B488, Type II ,over Nickel Plate per SAE AMS-QQ-N-290	

SMP3-T Interface Dimensions

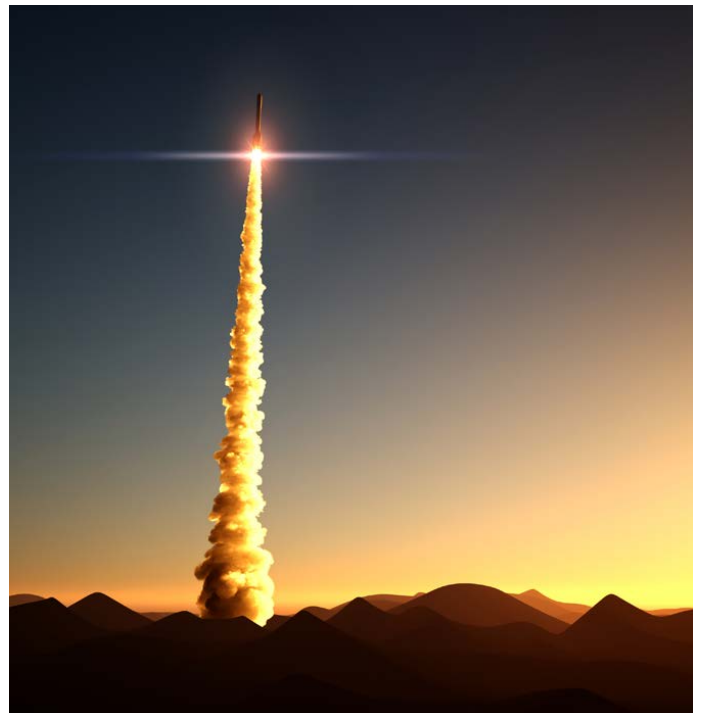
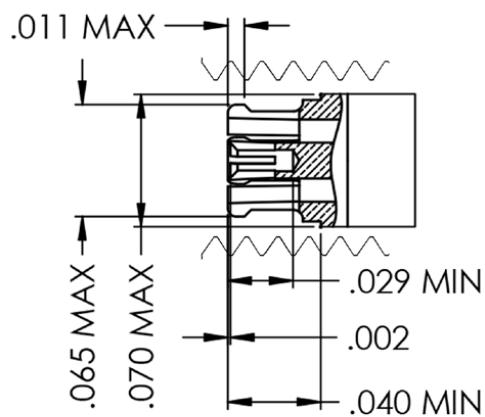
SMP3-T Male Full Detent Interfaces

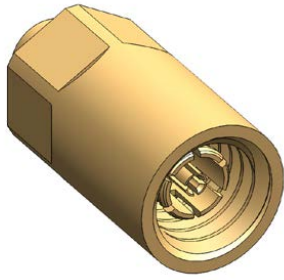


SMP3-T Male Smooth Bore Interfaces



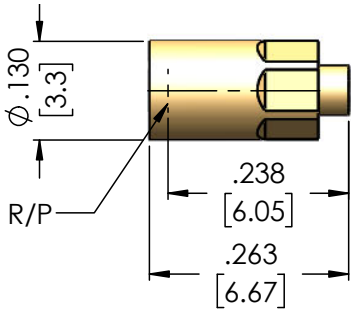
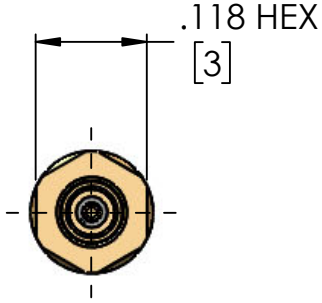
SMP3-T Male Full Detent Interfaces

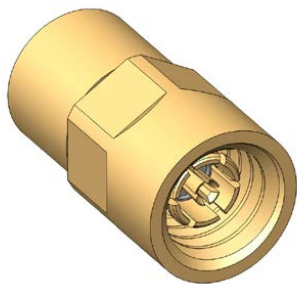




SMP3-T 930811G00N-000

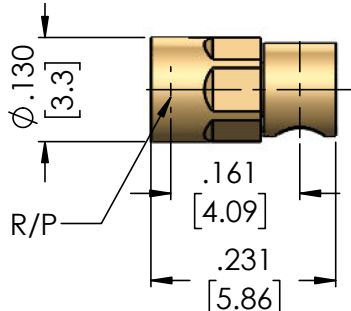
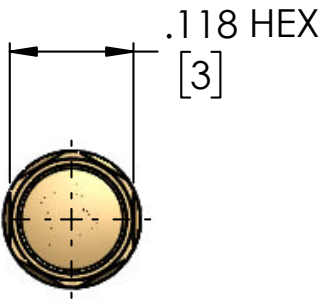
Straight Cable Mount Female, with Retractable Coupling Nut, for .047" Semi-Rigid Cable or Flexible Equivalents

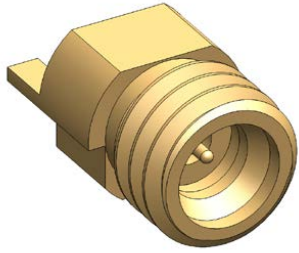
Part Number 930811G00N-000		Configuration Straight	Cable .047" SR or Flex	CC Termination One Step Solderless	OC Termination Direct Solder
Product Features					
Frequency	DC to 65 GHz				
CC Gender	Female				
CC & Body Plating	Gold				
Durability	500 Cycles				
Torque	28-32 in. oz.				
Interface Seal	No				
					



SMP3-T 937611G00N-000

Right Angle Cable Mount Female, with Integral Coupling Nut, for .047" Semi-Rigid Cable or Flexible Equivalents

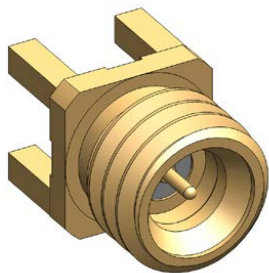
Part Number 937611G00N-000		Configuration Right Angle	Cable .047" SR or Flex	CC Termination Solder	OC Termination Direct Solder
Product Features					
Frequency	DC to 40 GHz				
CC Gender	Female				
CC & Body Plating	Gold				
Durability	500 Cycles				
Torque	28-32 in. oz.				
Interface Seal	No				
					



SMP3-T 9367000G91N-000

PCB Mount Receptacle, Male,
Full Detent, Edge Launch, Surface Mount
Center Contact and Ground Legs

Part Number 9367000G91N-000		Configuration Straight	PCB Mount Edge Launch	CC Termination Surface Mount	OC Termination Surface Mount
Product Features					
Frequency	DC to 65 GHz				
CC Gender	Male				
CC & Body Plating	Gold				
Durability	100 Cycles				
Tin Dip	Available				
Tape & Reel	Available				
Interface	Full Detent				



SMP3-T 9368000G00N-000

PCB Mount Receptacle Male, Full Detent,
Vertical Launch, Surface Mount Center Contact,
Thru Hole Ground Legs

Part Number 9368000G00N-000		Configuration Straight	PCB Mount Vertical Launch	CC Termination Surface Mount	OC Termination Thru Hole
Product Features					
Frequency	DC to 65 GHz				
CC Gender	Female				
CC & Body Plating	Gold				
Durability	100 Cycles				
Tin Dip	Available				
Tape & Reel	Available				
Interface	Full Detent				

SMP(X)-T Cable Options



Cable Options

	.040"	.047"	.085"
Mechanical			
Center Conductor	.008"	.011"	.020"
Dielectric	.026"	.036"	.064"
Braid	.040"	.047"	.085"
Outer Jacket	.060"	.059"	.104"
Static Bend Radius	5mm	5mm	6.35mm
Dynamic Bend Radius	10mm	10mm	12.7mm
Materials			
Center Conductor	Silver Plated Copper	Silver Plated Copper	Silver Plated Copper
Dielectric	PTFE	PFA	PTFE
Inner Shield	Flat SPC	Flat SPC	Flat SPC
Outer Shield	Silver Plated Copper	Silver Plated Copper	Silver Plated Copper
Outer Jacket	FEP	FEP	FEP
Electrical			
Operating Frequency	110 GHz	50 GHz	40 GHz
Impedance	50 Ω	50 Ω	50 Ω
VoP (%)	71.00%	70.00%	70.00%
Shielding Effectiveness	> 90 dB	> 90 dB	> 90 dB
Attenuation dB/ft			
1.0 GHz	0.60	0.35	0.21
2.0 GHz	0.86	0.53	0.31
8.0 GHz	1.74	1.15	0.66
12 GHz	2.14	1.44	0.83
18 GHz	2.64	1.85	1.06
26 GHz	3.18	2.22	1.34
40 GHz	3.96	2.83	1.73
50 GHz	4.44	3.20	
60 GHz	4.88		
Environmental			
Operating Temp Range	-65° C to + 150° C	-65° C to + 150° C	-55° C to + 125° C

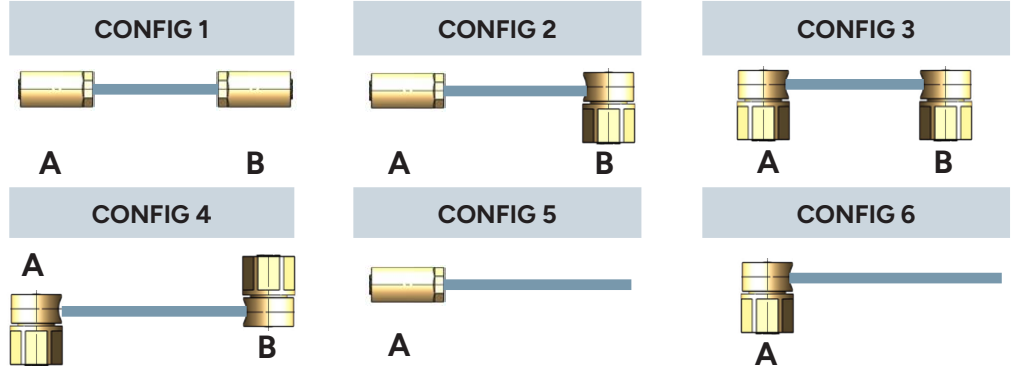
**All specifications for reference only*

Build Your Own SMP-T / SMPM-T / SMP3-T Cable Assembly

Choose Your Configuration

Enter Desired Assembly CONFIG # Below

Config #: _____



Select Connector A

Connector A: _____

Select Connector B

Connector B: _____

Select Cable Diameter & Circle Semi-Rigid or Flexible

Semi or Flex

Define Length of assembly in inches from the end of connectors on straight & centerline for right angles

CONNECTOR OPTIONS



SMP-T



SMPM-T



SMP3-T



Other

CABLE DIAMETERS & OPTIONS

SEMI RIGID OR FLEX

.040"

SEMI RIGID OR FLEX

.047"

SEMI RIGID OR FLEX

.085"

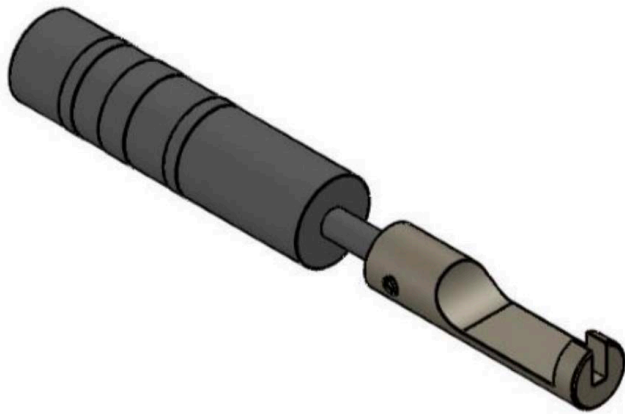
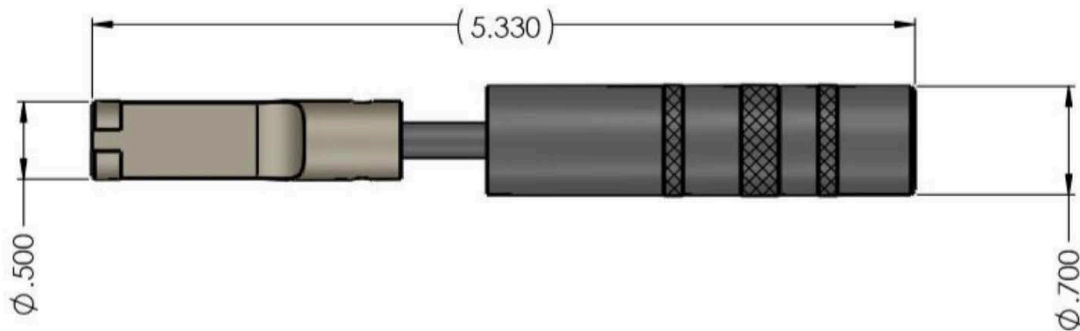
CABLE ASSEMBLY LENGTH STARTING AT .750" ON UP

Electrical

Provide Maximum Operating Frequency	
Provide Target Return Loss or VSWR at Max. Frequency	
Provide Target Insertion Loss at Max. Frequency	

Labels & Identification Circle Your Choices

Connector A Shrink Tubing	Yes - .500"	No Tubing
Add Marking:		
Connector B Shrink Tubing	Yes - .500"	No Tubing
Add Marking:		
Center Label, .750"	Yes - .750"	No Tubing
Add Marking:		



SMP-T

T33-88000-00
SMP-T Torque Wrench
Torque Type: Fixed

Hex Size: .187 Hex
Torque Setting: 28 to 32 in. oz.

SMPM-T

T33-88000-01
SMPM-T Torque Wrench
Torque Type: Fixed

Hex Size: .138 Hex
Torque Setting: 28 to 32 in. oz.

SMP3-T

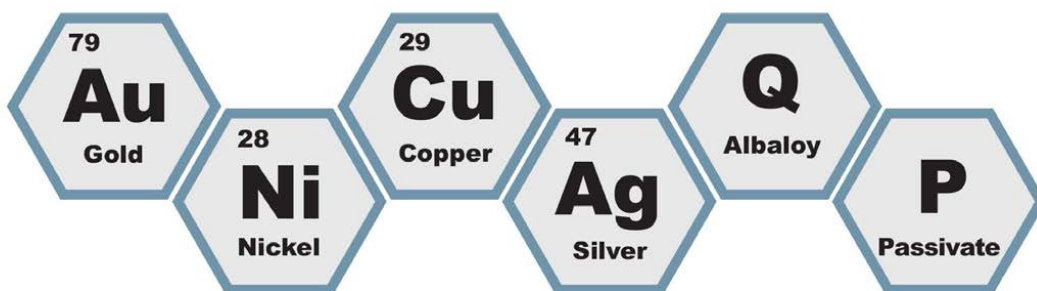
T33-88000-03
SMP3-T Torque Wrench
Torque Type: Fixed

Hex Size: .118 Hex
Torque Setting: 24 to 28 in. oz.

Delta Vertical Integration

In-house Automated Precious Metal Plating

Connectors are only as good as their plating, and that's why we decided this important process needed to be on-site. Having our own plating line, yields high quality, low costs, and reduced lead times. Call Delta for your electroplating needs. We also encourage current and potential customers to tour our facility.



Automated Tin/Lead Dipping For SMP-T, SMPM-T & SMP3-T

Our customized automated tin/lead dipping equipment enables high volume processing of our SMP-T, SMPM-T and SMP3-T PCB mount configurations. The finished connector is of high quality, with a consistent tin/lead flowed finish. Experience the Delta Difference!



Threaded RF

SMP-T

SMPM-T

SMP3-T

in

X

f



978-927-1060 | sales@deltarf.com | deltarf.com

416 Cabot Street, Beverly, MA 01915