

SSMC Connectors

Microminiature, screw-on mating

High performance to 12.4 GHz

General Description

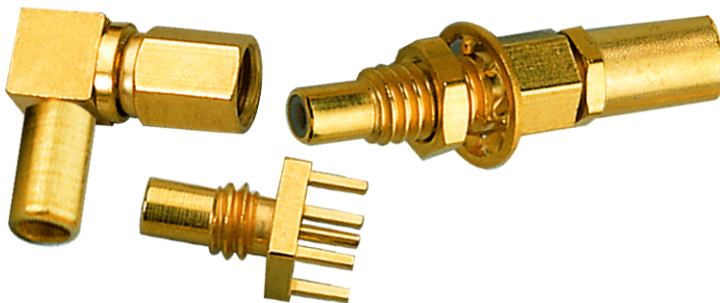
Delta SSMC connectors are microminiature, 50Ω impedance connectors with 6-40 threaded coupling. SSMC connectors are ideal for use in limited-space applications that require the rugged design of a threaded coupling interface. They are best suited for use with semi-rigid cables or miniature flexible cables in demanding applications up to 12.4 GHz. Our extensive line of receptacles contains a variety of mounting configurations and contact / insulator terminations perfect for any packaging requirements. Our adapters are available in both in-series and between series. We also offer an adapter with a slide-on version of the SSMC interface (See page 11) that is ideal for testing components; reducing wear and tear on mounted connectors and saving time on mating and unmating of test cables.

Delta's SSMC connectors are designed in accordance with IEC 169-20, and are intermateable with other manufacturers' SSMC connectors. However, through our unique internal construction design, precision machining capabilities, and Lean Manufacturing processes, we are able to offer the highest quality components while optimizing both cost and lead time.

These connectors are machined to exacting tolerances and the highest quality standards on modern CNC turning centers, and assembly is tightly controlled and monitored to ensure peak consistency of performance from unit to unit.

Contents (Click on any line to go to the indicated page)

Interface Dimensions and Specifications	2	Panel Jack Receptacles—2-hole Flange	9
Straight Cable Plugs	3	P.C. Board Jack Receptacles—	
Right Angle Cable Plugs	3	Through-Hole and Surface Mount	10
Straight Cable Jacks	4	P.C. Board Bulkhead Jack Receptacles—	
Right Angle Cable Jacks	4	Edge Mount	11
Straight Bulkhead-Mount Cable Jacks	5	Adapters Between Series	12
Right Angle Bulkhead-Mount Cable Jacks	5	Dust Cap for Jacks	12
Bulkhead Jack Receptacles—Front Mount	6	Cable Assembly Instructions	13
Bulkhead Jack Receptacles—Rear Mount	7	Index by Part Number	15
Panel Jack Receptacles—4-hole Flange	8	Delta Website Tools	16
		About Delta	17



(978) 927-1060

www.DeltaRF.com

FAX (978) 922-6430

Email: sales@DeltaRF.com

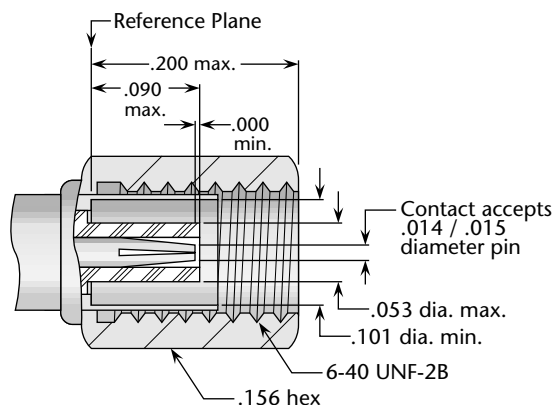
P.O. Box 53, Beverly, MA 01915



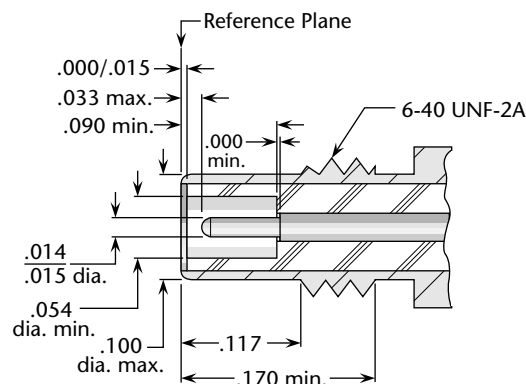


SSMC Interfaces

Plug Interface *



Jack Interface *



*Some proportions altered to illustrate detail.

SSMC Specifications*

Electrical:

Nominal Impedance: 50 ohms.

Frequency Range: DC–12.4 GHz.

Voltage Rating: 250 Volts RMS @ sea level;
600 Volts RMS @ 70,000 feet.

VSWR

RG-178 cable:

Straight connectors, $1.20 + (.020 \times F \text{ [GHz]})$.

Right angle connectors, $1.20 + (.030 \times F \text{ [GHz]})$.

RG-316 cable:

Straight connectors, $1.25 + (.020 \times F \text{ [GHz]})$.

Right angle connectors, $1.25 + (.030 \times F \text{ [GHz]})$.

.085" semi-rigid cable:

Straight connectors, $1.20 + (.015 \times F \text{ [GHz]})$.

Right angle connectors, $1.20 + (.025 \times F \text{ [GHz]})$.

Insertion Loss: .30 dB maximum @1.5 GHz.

RF Hipot: 400 Volts RMS @ 5 MHz.

Insulation Resistance: 1,000 megohms minimum.

RF Leakage: -50 dB minimum @ 2–3 GHz.

Contact Resistance: Center contact: 6.0 milliohms maximum;
Outer contact: 1.5 milliohms maximum.

All specifications are in accordance with IEC 169-20 and (as applicable) comparative MIL-PRF-39012 specifications for SSMB connectors.

*These specifications are typical and may not apply to all connectors. Detailed specifications for individual connectors are available on request.

Mechanical:

Force to Engage: 16 inch-ounces torque maximum.

Coupling Nut Retention: 25 pounds minimum.

Contact Retention: 2 pounds axial force minimum.

Durability: 500 mating cycles minimum.

Mating Torque: 28–32 inch-ounces.

Materials/Finishes:

Insulators:

Teflon TFE per ASTM D4894.

Contacts: Beryllium copper (Alloy C17300) per ASTM B196.

Contact Plating: Gold per ASTM B488.

Other Metal Parts: Brass per ASTM B16, gold plated per ASTM B488; or stainless steel per ASTM A582, plated gold per ASTM B488 or passivated per SAE AMS-A2700.

Gaskets: Silicone rubber per A-A-59588.

Environmental:

Operating Temperature: -65 to +165° C.

Vibration: Per MIL-STD-202, Method 204, condition D.

Corrosion (Salt Atmosphere):

Per MIL-STD-202, Method 101, test condition B.

Mechanical Shock: Per MIL-STD-202, Method 213, 75G.

Cable Plugs—For Flexible and Semi-Rigid Cable

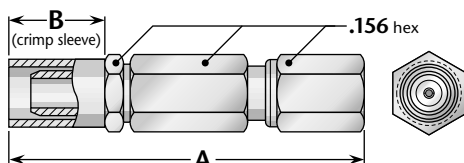


Figure 1
(Crimp type for flexible cable)

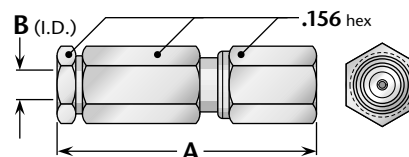


Figure 2
(Solder type for semi-rigid cable)

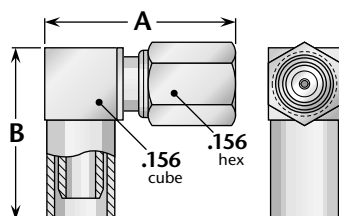


Figure 3
(Crimp type for flexible cable)

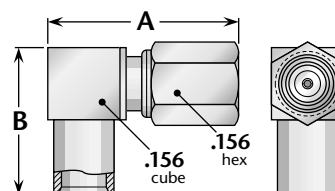


Figure 4
(Solder type for semi-rigid cable)

Straight Plugs

Cable Group	Figure	Dimensions		Plating		Delta P/N	Assembly Procedure/ Trim Code
		A	B	Body	Contact		
9	1	.740	.200	Gold	Gold (C)	2403-037-G001	A/01
10	1	.740	.200	Gold	Gold (C)	2403-100-G001	A/01
11	1	.740	.200	Gold	Gold (C)	2403-038-G001	A/01
14	2	.540	.090	Gold	Gold (C)	2403-025-G003	C/01
32	2	.540	.050	Gold	Gold (C)	2403-111-G003	C/01

Right Angle Plugs

Cable Group	Figure	Dimensions		Plating		Delta P/N	Assembly Procedure/ Trim Code
		A	B	Body	Contact		
9	3	.420	.355	Gold	Gold (C)	2407-037-G001-2	B/01
10	3	.420	.355	Gold	Gold (C)	2407-100-G001-1	B/01
11	3	.420	.355	Gold	Gold (C)	2407-038-G001-3	B/01
14	4	.420	.300	Gold	Gold (C)	2405-025-G003	D/01
32	4	.420	.300	Gold	Gold (C)	2405-111-G003	D/01

Cable Groups

9: RG-174, 188, 188A, 316; M17/94, 113, 119, 138, 172, 173, 196				10: Double-Shielded RG-174, 316; M17/152			
11: RG-178, 178A, 178B, 196, 196A; , M17/93				14: .085" semi-rigid; RG-405; M17/133			
				32: .047" semi-rigid; M17/151			

(C) in contact plating column indicates captive contact. • See pages 13-14 for assembly instructions.



Cable Jacks—For Flexible and Semi-Rigid Cable

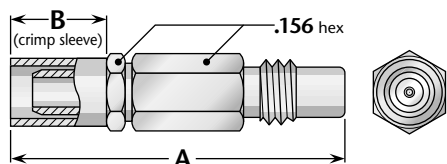


Figure 1
(Crimp type for flexible cable)

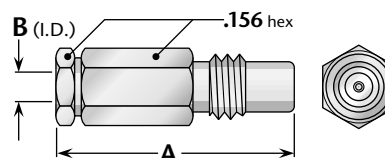


Figure 2
(Solder type for semi-rigid cable)

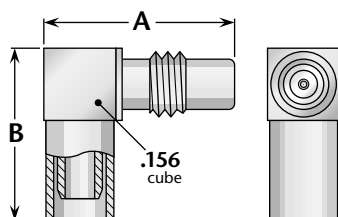


Figure 3
(Crimp type for flexible cable)

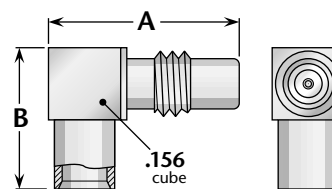


Figure 4
(Solder type for semi-rigid cable)

Straight Jacks

Cable Group	Figure	Dimensions		Plating		Delta P/N	Assembly Procedure/ Trim Code
		A	B	Body	Contact		
9	1	.700	.200	Gold	Gold (C)	2408-037-G001	A/01
10	1	.700	.200	Gold	Gold (C)	2408-100-G001	A/01
11	1	.700	.200	Gold	Gold (C)	2408-038-G001	A/01
14	2	.500	.090	Gold	Gold (C)	2408-025-G003	C/01
32	2	.500	.050	Gold	Gold (C)	2408-111-G003	C/01

Right Angle Jacks

Cable Group	Figure	Dimensions		Plating		Delta P/N	Assembly Procedure/ Trim Code
		A	B	Body	Contact		
9	3	.400	.355	Gold	Gold (C)	2478-037-G001-1	B/01
10	3	.400	.355	Gold	Gold (C)	2478-100-G001-1	B/01
11	3	.400	.355	Gold	Gold (C)	2478-038-G001	B/01
14	4	.400	.300	Gold	Gold (C)	2478-025-G003	D/01
32	4	.400	.300	Gold	Gold (C)	2478-111-G003	D/01

Cable Groups

9: RG-174, 188, 188A, 316; M17/94, 113, 119, 138, 172, 173, 196	10: Double-Shielded RG-174, 316; M17/152
11: RG-178, 178A, 178B, 196, 196A; , M17/93	14: .085" semi-rigid; RG-405; M17/133 32: .047" semi-rigid; M17/151

(C) in contact plating column indicates captive contact. • See pages 13-14 for assembly instructions.

Bulkhead Mount Cable Jacks—For Flexible and Semi-Rigid Cable

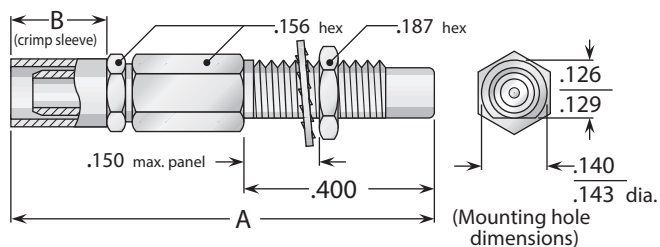


Figure 1
(Crimp type for flexible cable)

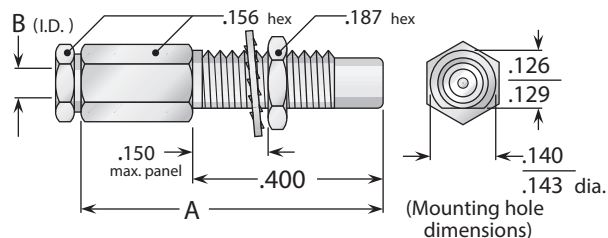


Figure 2
(Solder type for semi-rigid cable)

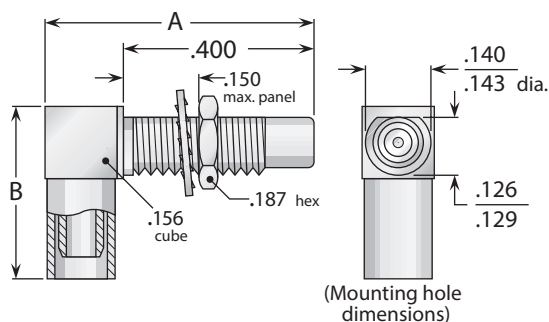


Figure 3
(Crimp type for flexible cable)

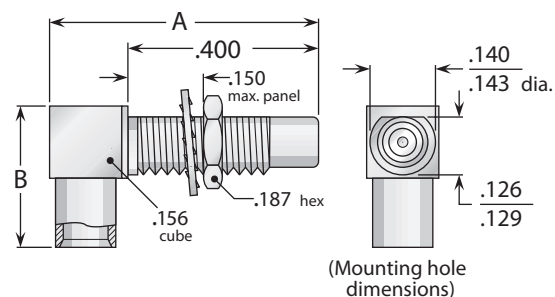


Figure 4
(Solder type for semi-rigid cable)

Straight Bulkhead Jacks

Cable Group	Figure	Dimensions		Plating		Delta P/N	Assembly Procedure/ Trim Code
		A	B	Body	Contact		
9	1	.700	.200	Gold	Gold (C)	2419-037-G911	A/01
10	1	.700	.200	Gold	Gold (C)	2419-100-G911	A/01
11	1	.700	.200	Gold	Gold (C)	2419-038-G911	A/01
14	2	.500	.090	Gold	Gold (C)	2416-025-G913	C/01
32	2	.500	.050	Gold	Gold (C)	2416-111-G913	C/01

Right Angle Bulkhead Jacks

Cable Group	Figure	Dimensions		Plating		Delta P/N	Assembly Procedure/ Trim Code
		A	B	Body	Contact		
9	3	.400	.355	Gold	Gold (C)	2476-037-G911	B/01
10	3	.400	.355	Gold	Gold (C)	2476-100-G911	B/01
11	3	.400	.355	Gold	Gold (C)	2476-038-G911	B/01
14	4	.400	.300	Gold	Gold (C)	2476-025-G913	D/01
32	4	.400	.300	Gold	Gold (C)	2476-111-G913	D/01

Cable Groups

9: RG-174, 188, 188A, 316; M17/94, 113, 119, 138, 172, 173, 196				10: Double-Shielded RG-174, 316; M17/152			
11: RG-178, 178A, 178B, 196, 196A; , M17/93		14: .085" semi-rigid; RG-405; M17/133			32: .047" semi-rigid; M17/151		

(C) in contact plating column indicates captive contact. • See pages 13-14 for assembly instructions.



Bulkhead Receptacles—Front Mount (Nut behind panel)

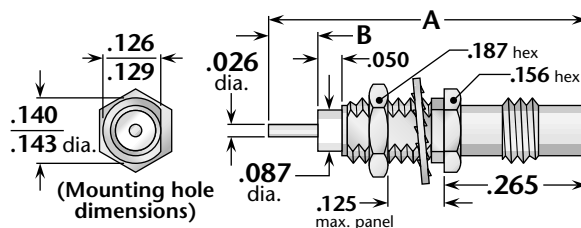


Figure 1 (Post contact)

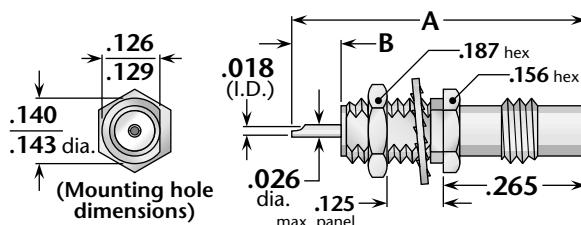


Figure 2 (Solder pot contact))

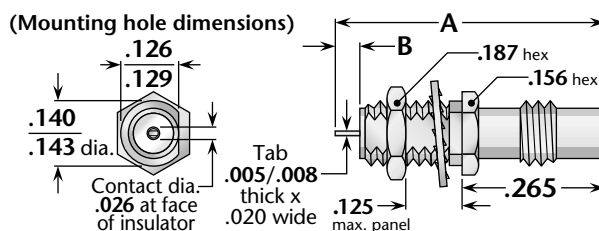


Figure 3 (Tab contact)

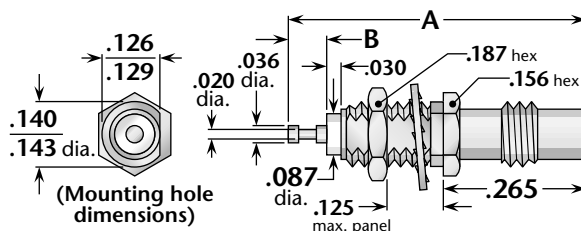


Figure 4 (Turret contact)

Figure	Dimensions		Plating		Delta P/N
	A	B	Body	Contact	
1	.665	.100	Gold (SS)	Gold (C)	2420-000-G911-12
2	.625	.100	Gold (SS)	Gold (C)	2420-000-G911-13
3	.565	.050	Gold (SS)	Gold (C)	2420-000-G911-14
4	.625	.080	Gold (SS)	Gold (C)	2420-000-G911-11

(C) in contact plating column indicates captive contact (Mechanically captivated).

(SS) in body plating column indicates stainless steel body.

Bulkhead Receptacles—Rear Mount (Nut in front of panel)

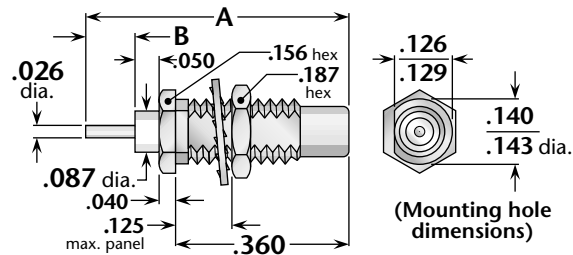


Figure 1 (Post contact)

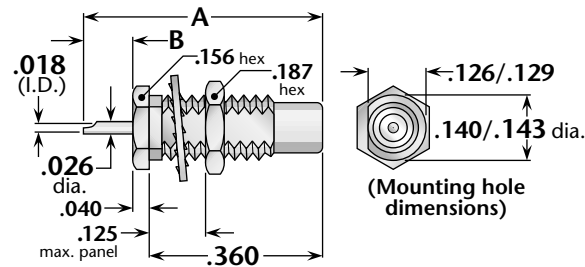


Figure 2 (Solder pot contact)

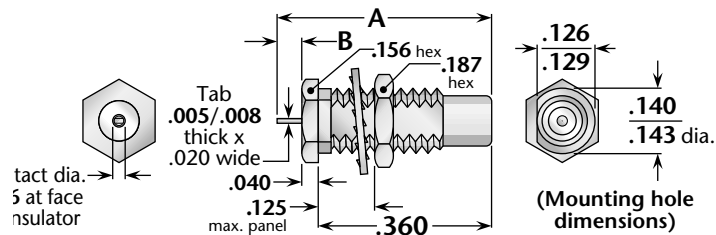


Figure 3 (Tab contact)

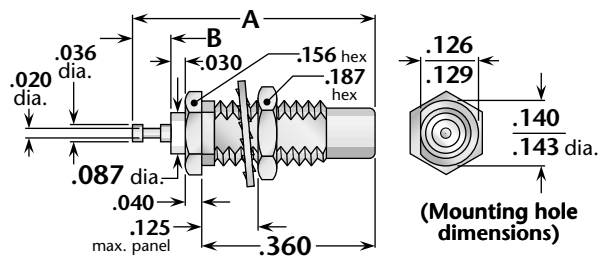


Figure 4 (Turret contact)

Figure	Dimensions		Plating		Delta P/N
	A	B	Body	Contact	
1	.550	.100	Gold (SS)	Gold (C)	2421-000-G911-3
2	.500	.100	Gold (SS)	Gold (C)	2421-000-G911-4
3	.450	.050	Gold (SS)	Gold (C)	2421-000-G911-5
4	.510	.080	Gold (SS)	Gold (C)	2421-000-G911-2

(C) in contact plating column indicates captive contact (Mechanically captivated).
(SS) in body plating column indicates stainless steel body.



Panel Receptacles—4-Hole Flange

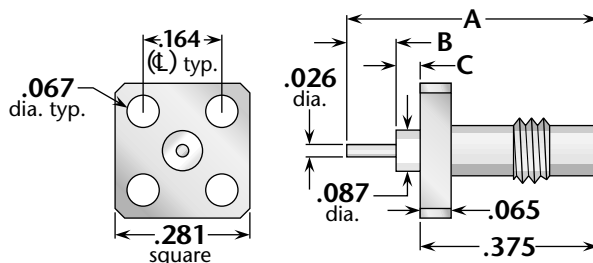


Figure 1 (Post contact)

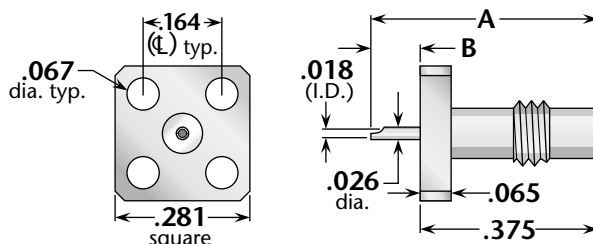


Figure 2 (Solder pot contact))

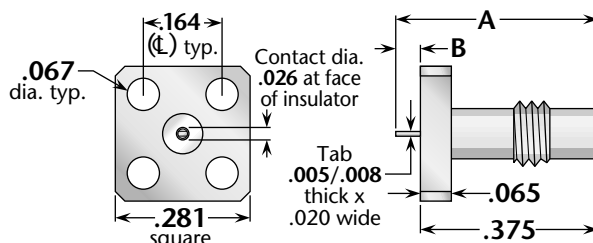


Figure 3 (Tab contact))

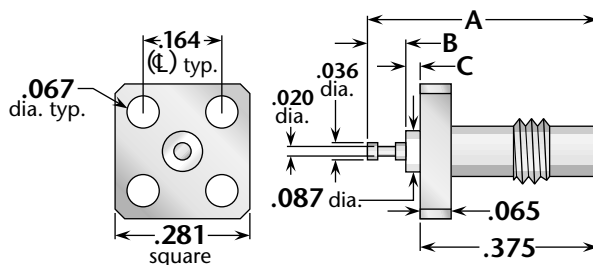


Figure 4 (Turret contact)

Figure	Dimensions		Plating		Delta P/N
	A	B	Body	Contact	
1	.525	.100	Gold	Gold (C)	2458-000-G911-4
2	.475	.100	Gold	Gold (C)	2458-000-G911-5
3	.425	.050	Gold	Gold (C)	2458-000-G911-6
4	.485	.080	Gold	Gold (C)	2458-000-G911-3

(C) in contact plating column indicates captive contact (Mechanically captivated).

Panel Receptacles—2-Hole Flange

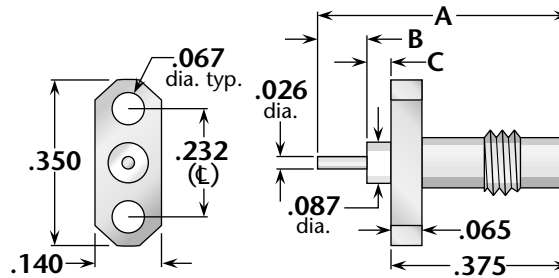


Figure 1 (Post contact)

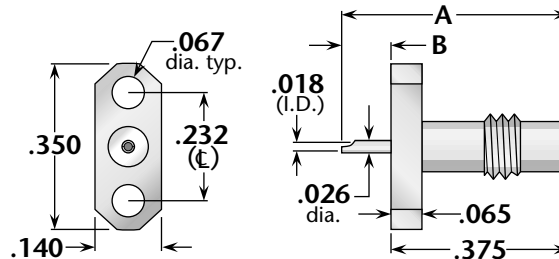


Figure 2 (Solder pot contact)

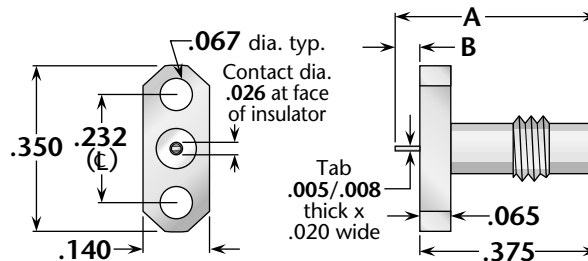


Figure 3 (Tab contact)

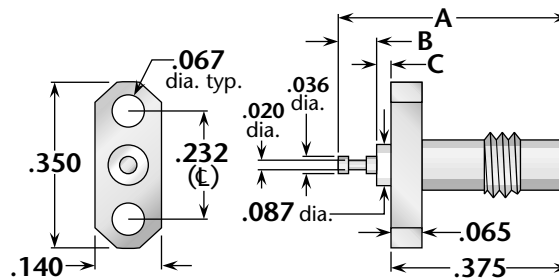


Figure 4 (Turret contact)

Figure	Dimensions		Plating		Delta P/N
	A	B	Body	Contact	
1	.525	.100	Gold	Gold (C)	2458-000-G911-8
2	.475	.100	Gold	Gold (C)	2458-000-G911-9
3	.425	.050	Gold	Gold (C)	2458-000-G911-10
4	.485	.080	Gold	Gold (C)	2458-000-G911-7

(C) in contact plating column indicates captive contact (Mechanically captivated).



P. C. Board Receptacles—Through-Hole and Surface Mount

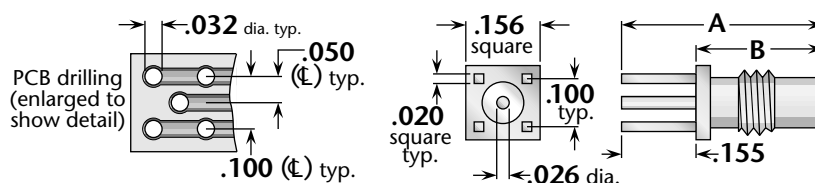


Figure 1 (Through-hole; fits board .125" thick maximum)

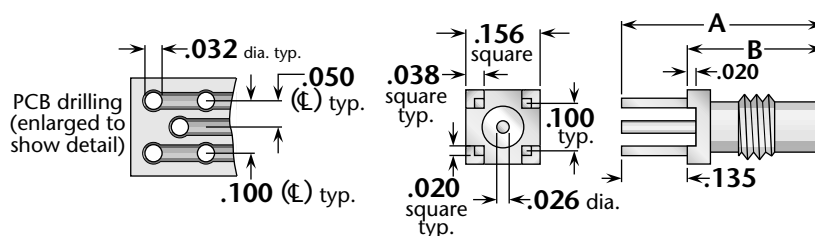


Figure 2 (Through-hole with standoff legs; fits board .125" thick maximum)

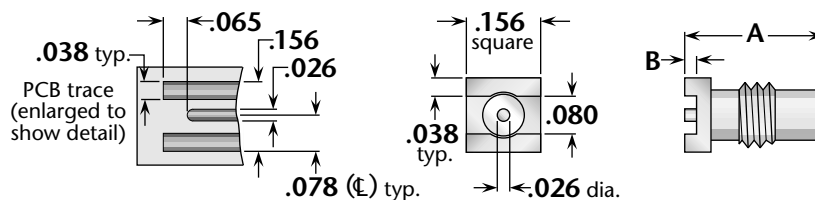


Figure 3 (Surface mount)

Figure	Dimensions		Plating		Delta P/N
	A	B	Body	Contact	
1	.420	.265	Gold	Gold (C)	2467-000-G911-5
2	.420	.285	Gold	Gold (C)	2467-000-G911-6
3	.290	.020	Gold	Gold (C)	2467-000-G911-7

(C) in contact plating column indicates captive contact (Mechanically captivated).
All are available with different leg lengths or other modifications.

Edge Mount P.C. Board Receptacles—Bulkhead Jack

These connectors are designed for use in applications requiring tight vertical spacing of P.C. boards (see illustrations).

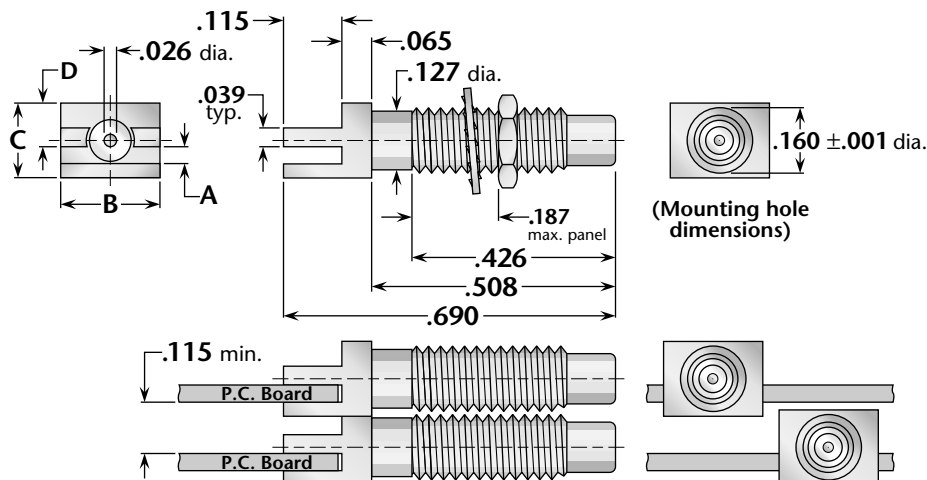


Figure 1 (.115" minimum vertical board spacing)

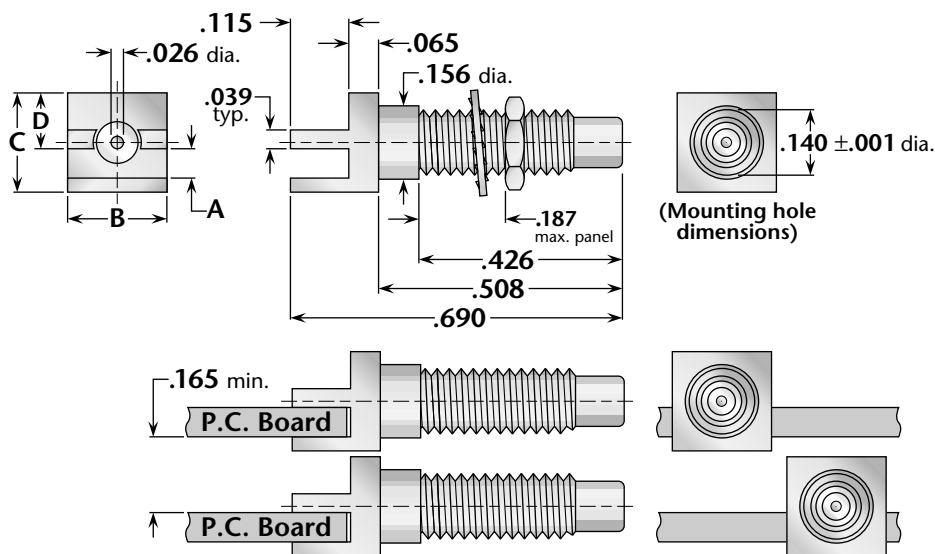


Figure 2 (.165" minimum vertical board spacing)

Board Thickness	Figure	Dimensions				Plating		Delta P/N
		A	B	C	D	Body	Contact	
.042	1	.048	.207	.156	.075	Gold (SS)	Gold (C)	2467-000-G91P-22
.054	1	.060	.207	.156	.075	Gold (SS)	Gold (C)	2467-000-G91P-8
.067	1	.073	.156	.222	.110	Gold (SS)	Gold (C)	2467-000-G91P-11
.042	2	.048	.207	.207	.115	Gold (SS)	Gold (C)	2467-000-G91P-2
.054	2	.060	.207	.207	.115	Gold (SS)	Gold (C)	2467-000-G91P-14
.062	2	.066	.207	.207	.115	Gold (SS)	Gold (C)	2467-000-G91P-13

(C) in contact plating column indicates captive contact (Epoxy captivated).
(SS) in body plating column indicates stainless steel body.



SMA to SSMC Adapters

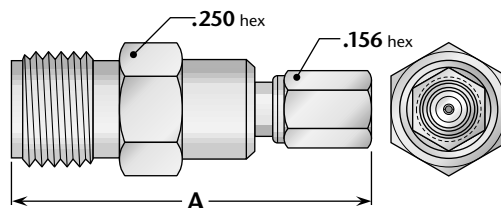


Figure 1 (SMA jack to SSMC plug)

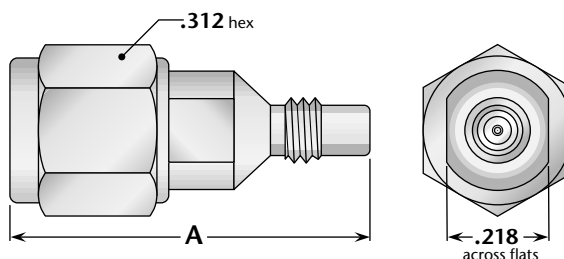


Figure 2 (SMA plug to SSMC jack)

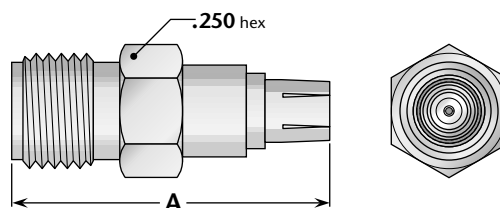
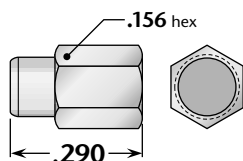


Figure 3 (SMA jack to SSMC *push-on* plug)

Figure	Dimensions	Plating		Delta P/N
	A	Body	Contact	
1	.750	Passivated (SS)	Gold (C)	2234-000-K001-195
2	.750	Passivated (SS)	Gold (C)	2234-000-K001-194
3	.665	Passivated (SS)	Gold (C)	2432-000-G00D

Dust Cap for Jacks



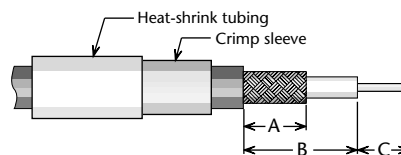
Plating	Delta P/N
Gold	2234-000-K001-194

(C) in contact plating column indicates captive contact (Mechanically captivated).
(SS) in body plating column indicates stainless-steel body.

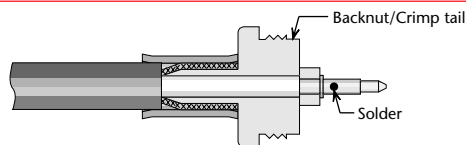
Assembly Procedure A

Cable Trim Codes			
Code	A	B	C
A/01	.150	.300	.125

- 1) Trim cable per chart. Slide crimp sleeve and heat-shrink tubing (if supplied) onto cable.

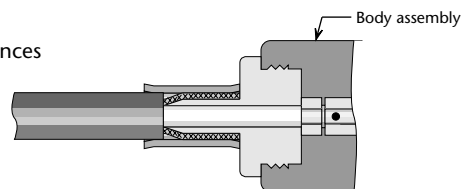


- 2) Flare cut end of braid slightly by rotating dielectric. Insert cable into rear of backnut/crimp tail, with all braid wires on outside of crimp tail. Slide insulator over cable dielectric until it is flush with front of backnut, and cable insulation bottoms inside insulator. Slide contact onto center conductor, with contact shoulder flush with front of insulator. Solder contact to center conductor.



- 3) Slide crimp sleeve forward until flush with clamp shoulder; crimp as close to shoulder as possible. (see page 15 for hex die sizes).

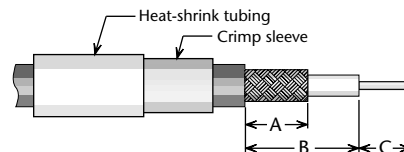
- 4) Insert prepared cable into back of body. Slide nut forward and tighten to 25-50 inch ounces torque. Shrink heat-shrink tubing (if supplied) with hot-air gun.



Assembly Procedure B

Cable Trim Codes			
Code	A	B	C
B/01	.150	.187	.050

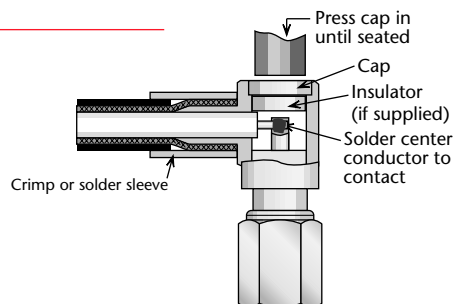
- 1) Trim cable per chart. Slide crimp sleeve and heat-shrink tubing (if supplied) onto cable.



- 2) Insert cable into rear of body, with all braid wires on outside of crimp tail. Push cable in until end of braid touches connector body shoulder and center conductor rests in contact slot.

Slide crimp sleeve forward until flush with body and crimp (see below for hex die sizes). (For solder-type connectors, solder braid to body and sleeve through hole in sleeve.)

Solder center conductor into contact slot, assemble insulator disc (if supplied), then press cap into body until seated. Shrink heat-shrink tubing (if supplied) with hot-air gun.



Crimp Tools for Flexible Cable



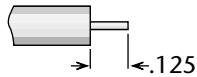
Frame only—P/N M22520/5-01—Use with interchangeable dies listed below.

Cable Group*	Hex Die Size	Die Set P/N	Closure
9	.128 hex, .400 wide	M22520/5-35	B
10	.151 hex, .400 wide	M22520/5-37	B
11	.105 hex, .400 wide	M22520/5-33	B

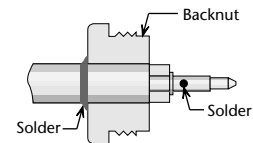


Assembly Procedure C

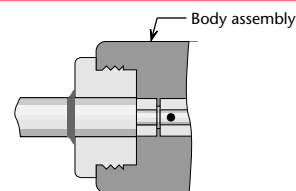
- 1) Trim cable as shown.
Remove any burrs from
jacket and
center conductor.



- 2) Soft solder cable jacket to backnut, making sure that end of cable is flush with front side of backnut. Slide insulator over cable dielectric until it is flush with front of backnut. Slide contact onto center conductor, with contact shoulder flush with front of insulator. Solder contact to center conductor.



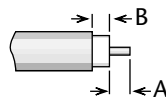
- 3) Insert prepared cable into back of body. Slide nut forward and tighten to 25-50 inch ounces torque.



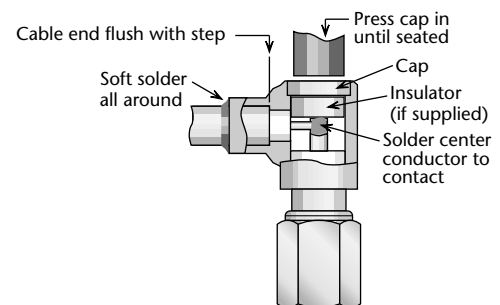
Assembly Procedure D

Trim Codes

Code	A	B
D/01	.059	.050



- 1) Trim cable as shown.
Remove any burrs
from jacket and
center conductor.



- 2) Soft solder cable jacket to body, making sure that end of cable is flush with step in body. Solder center conductor into contact slot, assemble insulator disc (if supplied), then press cap into body until seated or screw into place.

**Index by Delta Part Number (Click on any line to go to the indicated page)**

Delta P/N	Page	Delta P/N	Page	Delta P/N	Page
2234-000-K001-194.....	12	2416-111-G913	5	2458-000-G911-9	9
2234-000-K001-195.....	12	2419-037-G911	5	2467-000-G911-5	10
2403-025-G003	3	2419-038-G911	5	2467-000-G911-6	10
2403-037-G001	3	2419-100-G911	5	2467-000-G911-7	10
2403-038-G001	3	2420-000-G911-11	6	2467-000-G91P-11	11
2403-100-G001	3	2420-000-G911-12	6	2467-000-G91P-13	11
2403-111-G003	3	2420-000-G911-13	6	2467-000-G91P-14	11
2405-025-G003	3	2420-000-G911-14	6	2467-000-G91P-2	11
2405-111-G003	3	2421-000-G911-2	7	2467-000-G91P-22	11
2407-037-G001-2	3	2421-000-G911-3	7	2467-000-G91P-8	11
2407-038-G001-3	3	2421-000-G911-4	7	2476-025-G913	5
2407-100-G001-1	3	2421-000-G911-5	7	2476-037-G911	5
2408-025-G003	4	2432-000-G00D	12	2476-038-G911	5
2408-037-G001	4	2458-000-G911-10	9	2476-100-G911	5
2408-038-G001	4	2458-000-G911-3	8	2476-111-G913	5
2408-100-G001	4	2458-000-G911-4	8	2478-025-G003	4
2408-111-G003	4	2458-000-G911-5	8	2478-037-G001-1	4
2416-025-G913	5	2458-000-G911-6	8	2478-038-G001	4
		2458-000-G911-7	9	2478-100-G001-1	4
		2458-000-G911-8	9	2478-111-G003	4



Connect Here: www.DeltaRF.com

Download hundreds of pages of product literature; full catalogs or only the pages you want.

Our website is designed with innovative features to help you find the information you need, quickly and easily.

Our unique *Connector Designer* lets you draw and specify custom connectors right onscreen, and e-mail the information for quotation...all with no software to download, and no browser plug-ins needed.

You can design cable assemblies just as easily, with our *Cable Assembly Designer*.

Our *Connector Finder* lets you search for standard products by characteristic.

No match? No problem! The *Connector Finder* saves your search terms automatically so you can email the requirements for quotation.

Our site contains a full, illustrated glossary of connector terminology.

About Delta Electronics

Manufacturing Corporation

ISO9001:2008 Certified

From our early New England roots to our current global manufacturing presence, we have consistently grown with, and adapted to, the ever-changing requirements of the coaxial connector market. Beginning as a small manufacturer of UHF-frequency connectors, our growth in product lines and manufacturing capability now positions us as a premier connector supplier, with one of the broadest ranges of products in the industry.

Along with our product-line expansion, we recognized the need to keep pace with innovations such as Lean Manufacturing, precision CNC turning centers, and sophisticated CAD/CAM and HFSS design-modeling software, all geared toward providing our customers the highest-quality products available, with quick delivery and competitive prices.

As the connector market expanded in scope worldwide, we responded by developing a global presence to better serve the needs of our customers, both domestic and international.

Our wholly-owned subsidiary in Nanjing, China provides unmatched capability to meet customer requirements, particularly for low-cost, high-volume connector types.

In recognition of our customers' need to streamline their processes, we have launched our "Value Added" services, providing finished cable assemblies and integrated connectorized components that help our customers optimize their production and eliminate overhead.

Another "Value-Added" service is our new, fully-automated electroplating facility, incorporating robotic handling and computerized process controls and testing, increasing our capability to perform contract plating of a wide variety of component parts with the same quality and consistency featured on our connectors.

Call us for all your coaxial connector needs—we make over 70 different series to match your requirements exactly, including:

- 1.0/2.3 • 7/16 • Adapters Between Series* • BMA • BMMA • BNC*
- BNC Push-on • C • Cable assemblies • E-Line Brass SMA • GHV
- GR874 • HN • LC-LT • MC-Card • MCX • MMCX • MHV • N* • QDS
- QDL • QMA • SC • SM • SMA* • SMA 26.5 GHz • SMA 27 GHz
- SMB • SMC • SMD • SMK (2.92 MM) • SMP • SSMC • TNC*
- TPS • Triaxial BNC, C, N, TNC • Twinax BNC, HN, TNC
- Twinax HV • Twinax 3/4-20 • 75Ω BNC, TNC
- 70Ω N • UHF

*M39012/M55339 QPL available.



Delta Electronics Mfg. Corp.
Tel: (978) 927-1060 • Fax: (978) 922-6430
P.O. Box 53 • 416 Cabot St.
Beverly, MA 01915 USA

Delta Microwave Electronics MFG. Corp.
Tel: +86 25 85436296 • Fax: +86 25 85436297
Room 209, Changjiang Science & Technology Park
Luxiying 97# • Nanjing 210037, China

www.DeltaRF.com