

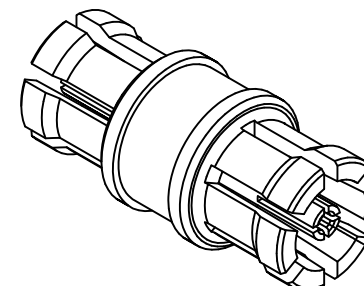
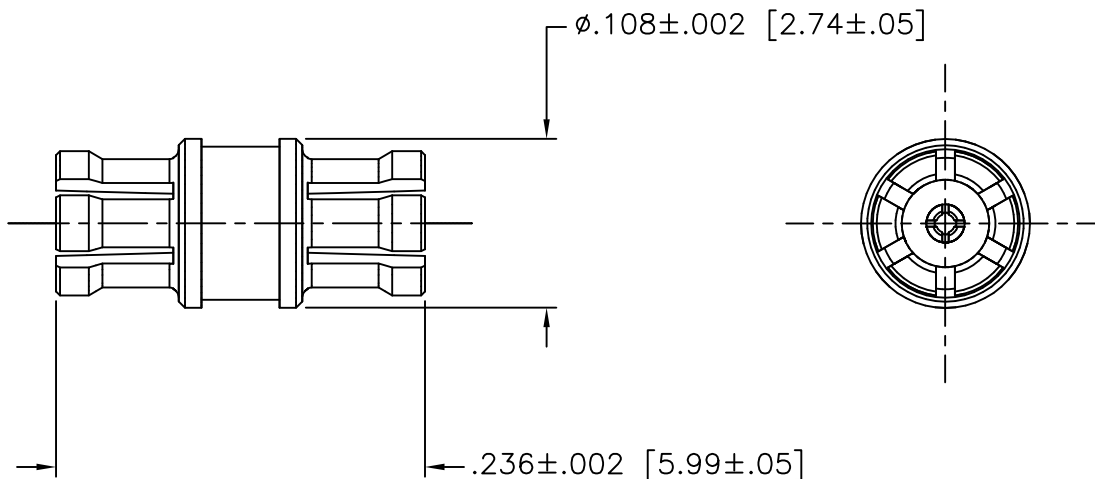


DIMENSIONS IN BRACKETS ARE IN MILLIMETERS AND ARE FOR REFERENCE ONLY.

8828000G001-011

ELECTRICALS

IMPEDANCE	50	OHMS
RF HIGH POT. (@ 5 MHz)	200	V rms
DWV (@ SEA LEVEL)	325	V rms
INSULATION RESIST	5,000	megOHMS(min)
FREQ. RANGE	DC - 40	GHz
TYP. VSWR	1.5	MAX



ISOMETRIC VIEW

NOTES:

1. ASSEMBLED CONNECTOR INTERFACES ARE DESIGNED IN ACCORDANCE WITH MIL-STD-348.
2. MATERIAL: INSULATOR - TEFLON PER ASTM D4894, TYPE I, GRADE 1, CLASS B
CONTACT & HOUSING - BERYLLIUM COPPER PER ASTM B196, C17300 ALLOY. HT
3. FINISHES: CONTACT & HOUSING - GOLD PLATE PER ASTM B488, TYPE II, CODE C

UNLESS OTHERWISE SPECIFIED: TOLERANCES: 3 PLACES = $\pm .005$, 2 PLACES = $\pm .02$, ANGLES = $\pm 1/2^\circ$, SURFACE FINISH = 63

-	OUTLINE	12/28/11
ALT.	REVISIONS	DATE

DELTA ELECTRONICS MFG. CORP. Beverly, MA 01915					
TITLE: SMPM BULLET ADAPTER - JACK TO JACK - .236 (5.99 MM) LONG					
Drawn by ADK	Scale 8/1	Ckd. by BJM	Engr Appd BJM	FILE NAME: 8828000G001-011T	
12/28/11					

THESE DRAWINGS AND SPECIFICATIONS ARE THE PROPERTY OF DELTA ELECTRONICS MFG CORP. AND SHALL NOT BE REPRODUCED, OR COPIED OR USED AS THE BASIS FOR THE MANUFACTURE OR SALE OF APPARATUS OR DEVICES WITHOUT THEIR EXPRESS WRITTEN CONSENT.

CODE IDENT.-00795

8828000G001-011